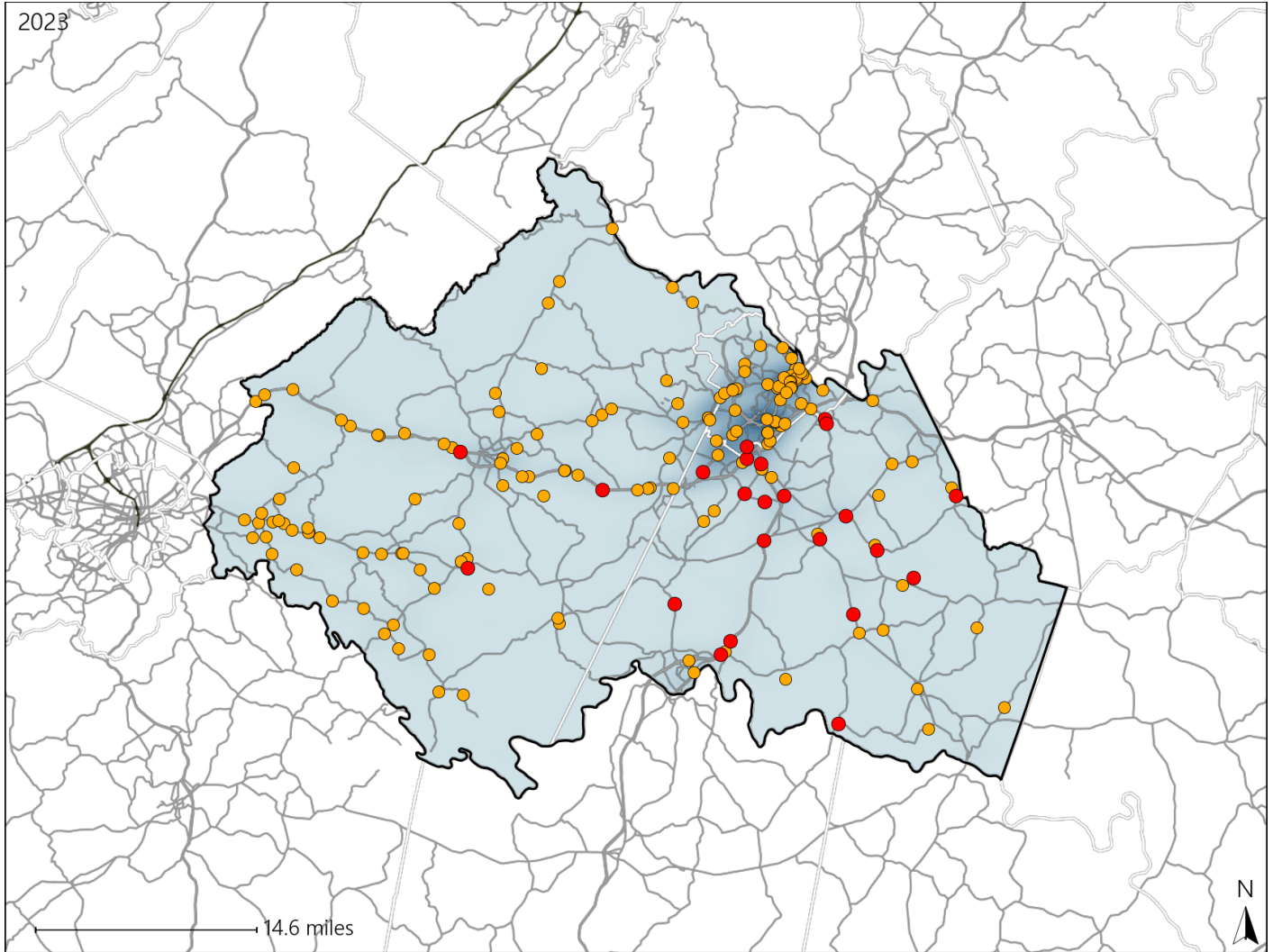


# Virginia Senate District 8 Crash Statistics

Report Generated May, 2024

	Count	Highest Time Period(s)	Highest Day(s)	Highest Month(s)
<b>Fatal Crashes</b>	<b>23</b>	Noon - 2:59pm (26%)	Thursday (22%)	March (22%)
<b>Resulting Fatalities</b>	<b>26</b>			
<b>Serious Injury Crashes</b>	<b>152</b>	6:00pm - 8:59pm (21%)	Tuesday (20%)	August - May (26%)



### Senate District 8 Crashes

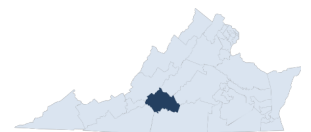
Interstate Crashes

- Fatal
- Serious Injury

Non-interstate Crashes

- Fatal
- Serious Injury

The blue gradient represents the density of all crashes.

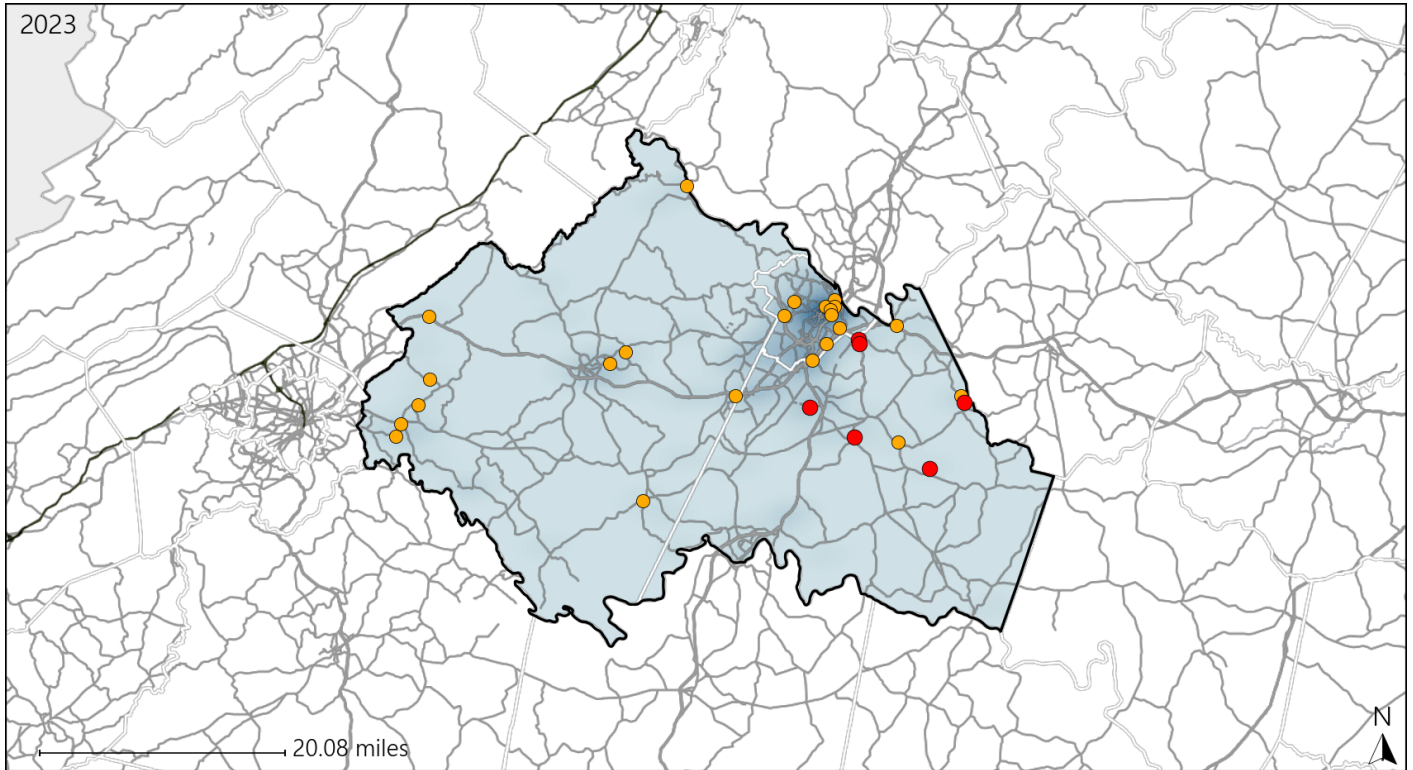


Available Crash Data - Calendar Year (CY)	CY 2020	CY 2021	CY 2022	CY 2023
Total Crashes	2557	2651	2769	2846
Fatal Crashes	24	34	26	23
Injury Crashes	871	904	805	849

# Virginia Senate District 8 Alcohol Crash Statistics

Report Generated May, 2024

	Count	Highest Time Period(s)	Highest Day(s)	Highest Month(s)
<b>Fatal Crashes</b>	<b>6</b>	<b>6:00pm - 8:59pm</b>	<b>Saturday</b>	<b>October</b>
<b>Resulting Fatalities</b>	<b>6</b>	<b>Midnight - 2:59am</b> (66%)	<b>(33%)</b>	<b>(33%)</b>
<b>Serious Injury Crashes</b>	<b>24</b>	<b>6:00pm - 8:59pm</b> (38%)	<b>Sunday</b> (38%)	<b>February</b> (21%)



## Senate District 8 Alcohol-Related Crashes

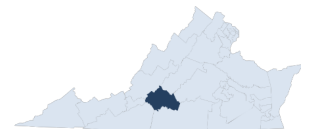
Interstate Crashes

Non-interstate Crashes

- Fatal
- Serious Injury

- Fatal
- Serious Injury

The blue gradient represents the density of all alcohol-related crashes.

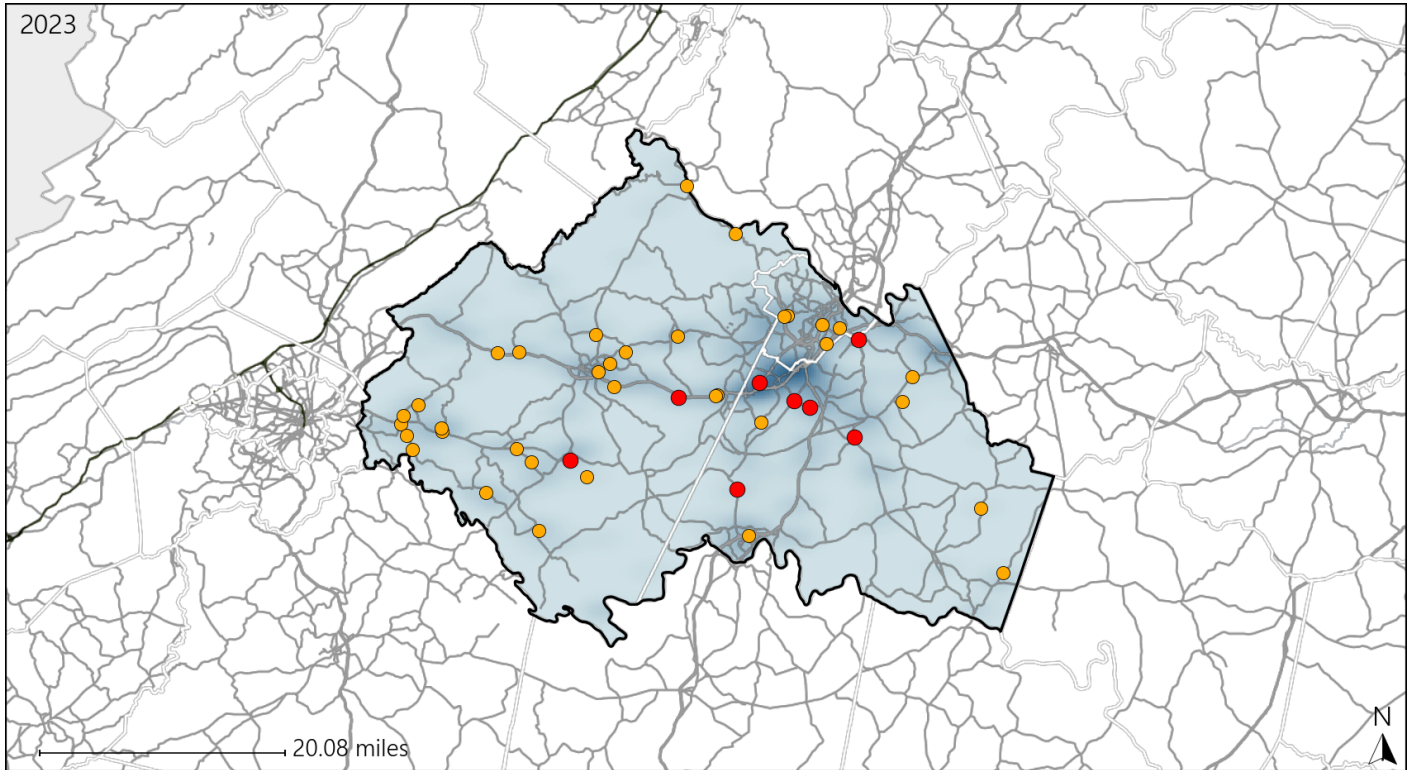


Available Crash Data - Calendar Year (CY)	CY 2020	CY 2021	CY 2022	CY 2023
Total Crashes	2557	2651	2769	2846
Fatal Crashes	24	34	26	23
Injury Crashes	871	904	805	849
Alcohol-Related Fatal Crashes	7	6	8	6
Percent of Alcohol-Related Fatal Crashes to Total Fatal Crashes	29%	18%	31%	26%
Alcohol-Related Injury Crashes	80	74	50	60
Percent of Alcohol-Related Injury Crashes to Total Injury Crashes	9%	8%	6%	7%

# Virginia Senate District 8 Speed Crash Statistics

Report Generated May, 2024

	Count	Highest Time Period(s)	Highest Day(s)	Highest Month(s)
<b>Fatal Crashes</b>	<b>8</b>	<b>3:00pm - 5:59pm</b>	<b>Saturday</b>	<b>July • October</b>
<b>Resulting Fatalities</b>	<b>11</b>	<b>6:00pm - 8:59pm</b> (50%)	<b>(38%)</b>	<b>(50%)</b>
<b>Serious Injury Crashes</b>	<b>36</b>	<b>Noon - 2:59pm</b> (28%)	<b>Saturday • Thursday</b> (44%)	<b>April • December</b> (28%)

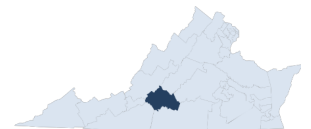


### Senate District 8 Speed-Related Crashes

Interstate Crashes      Non-interstate Crashes

- Fatal
- Serious Injury
- Fatal
- Serious Injury

The blue gradient represents the density of all speed-related crashes.

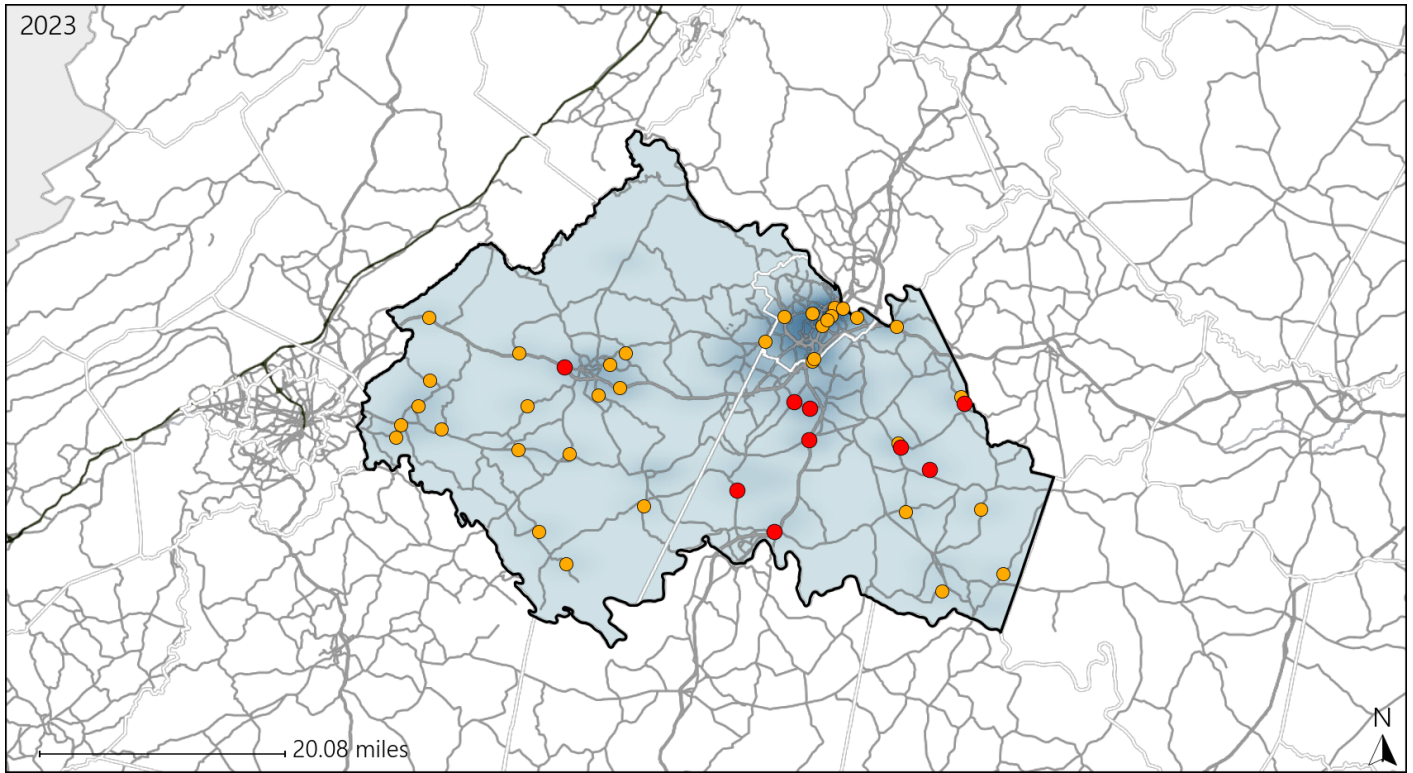


Available Crash Data - Calendar Year (CY)	CY 2020	CY 2021	CY 2022	CY 2023
Total Crashes	2557	2651	2769	2846
Fatal Crashes	24	34	26	23
Injury Crashes	871	904	805	849
Speed-Related Fatal Crashes	6	16	9	8
Percent of Speed-Related Fatal Crashes to Total Fatal Crashes	25%	47%	35%	35%
Speed-Related Injury Crashes	123	117	94	107
Percent of Speed-Related Injury Crashes to Total Injury Crashes	14%	13%	12%	13%

# Virginia Senate District 8 Unrestrained Crash Statistics

Report Generated May, 2024

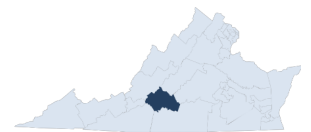
	Count	Highest Time Period(s)	Highest Day(s)	Highest Month(s)
<b>Fatal Crashes</b>	<b>9</b>	<b>3:00pm - 5:59pm</b>	<b>Friday • Monday</b>	<b>September</b>
<b>Unrestrained Fatalities</b>	<b>10</b>	<b>Noon - 2:59pm</b> (44%)	<b>(44%)</b>	<b>(33%)</b>
<b>Serious Injury Crashes</b>	<b>36</b>	<b>6:00pm - 8:59pm</b>	<b>Friday</b>	<b>December • May</b>
		<b>Noon - 2:59pm</b> (44%)	<b>(28%)</b>	<b>(34%)</b>



### Senate District 8 Unrestrained-Related Crashes

- |                    |                        |
|--------------------|------------------------|
| Interstate Crashes | Non-interstate Crashes |
| ● Fatal            | ● Fatal                |
| ● Serious Injury   | ● Serious Injury       |

The blue gradient represents the density of all unrestrained-related crashes.

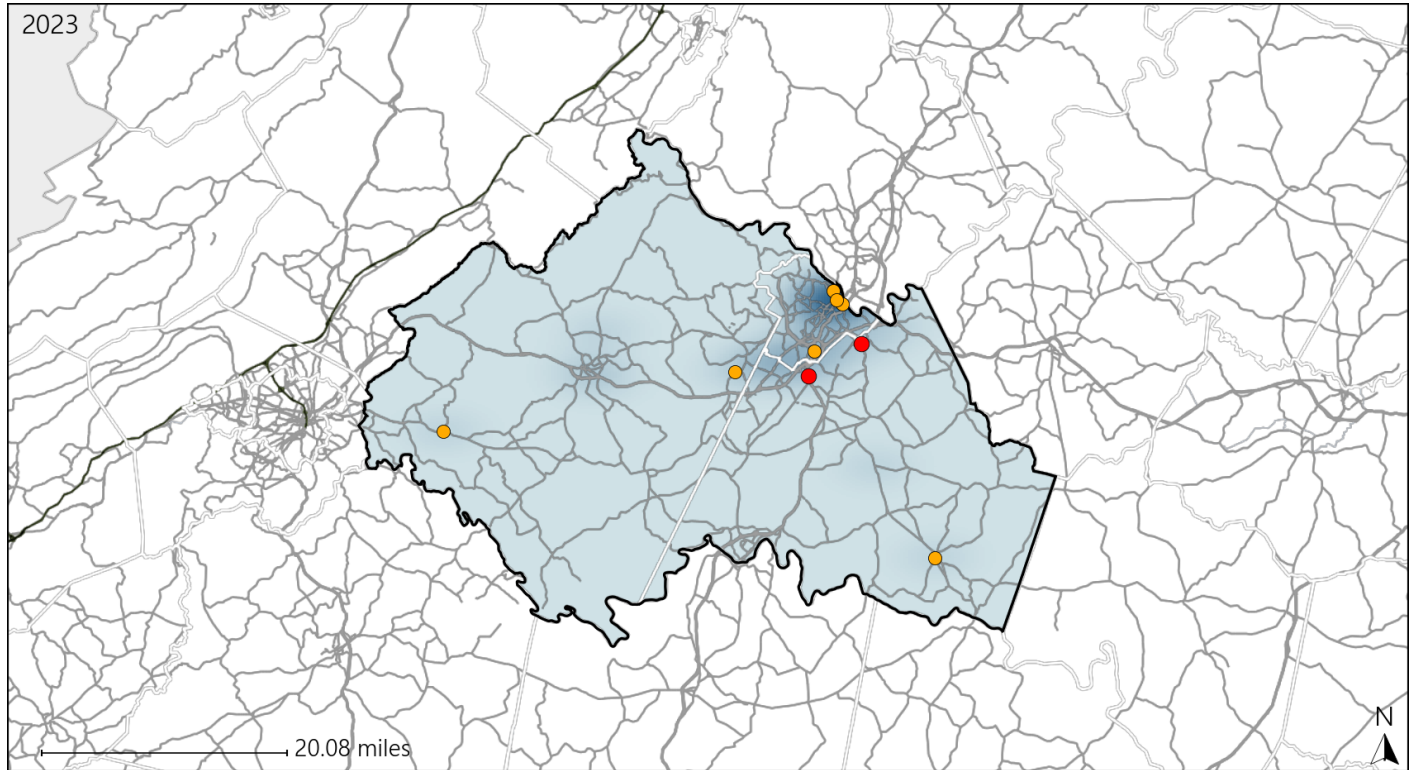


Available Crash Data - Calendar Year (CY)	CY 2020	CY 2021	CY 2022	CY 2023
Total Crashes	2557	2651	2769	2846
Fatalities	24	35	26	26
Injuries	1171	1323	1124	1234
Unrestrained Fatalities	9	13	8	10
Percent of Unrestrained Fatalities to Total Fatalities	38%	37%	31%	38%
Unrestrained Injuries	120	128	94	105
Percent of Unrestrained Injuries to Total Injuries	10%	10%	8%	9%

# Virginia Senate District 8 Pedestrian Crash Statistics

Report Generated May, 2024

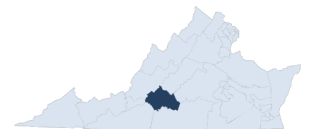
	Count	Highest Time Period(s)	Highest Day(s)	Highest Month(s)
<b>Fatal Crashes</b>	<b>2</b>	<b>6:00pm - 8:59pm</b>	<b>Thursday • Wednesday</b>	<b>June • November</b>
<b>Pedestrian Fatalities</b>	<b>2</b>	<b>9:00pm - 11:59pm</b> (100%)	<b>(100%)</b>	<b>(100%)</b>
<b>Serious Injury Crashes</b>	<b>7</b>	<b>6:00pm - 8:59pm</b> (43%)	<b>Tuesday • Wednesday</b> (58%)	<b>December • November</b> (58%)



### Senate District 8 Pedestrian-Related Crashes

- |  |  |
|--|--|
| Interstate Crashes                                   | Non-interstate Crashes                               |
| <span style="color: red;">●</span> Fatal             | <span style="color: red;">●</span> Fatal             |
| <span style="color: orange;">●</span> Serious Injury | <span style="color: orange;">●</span> Serious Injury |

The blue gradient represents the density of all pedestrian-related crashes.

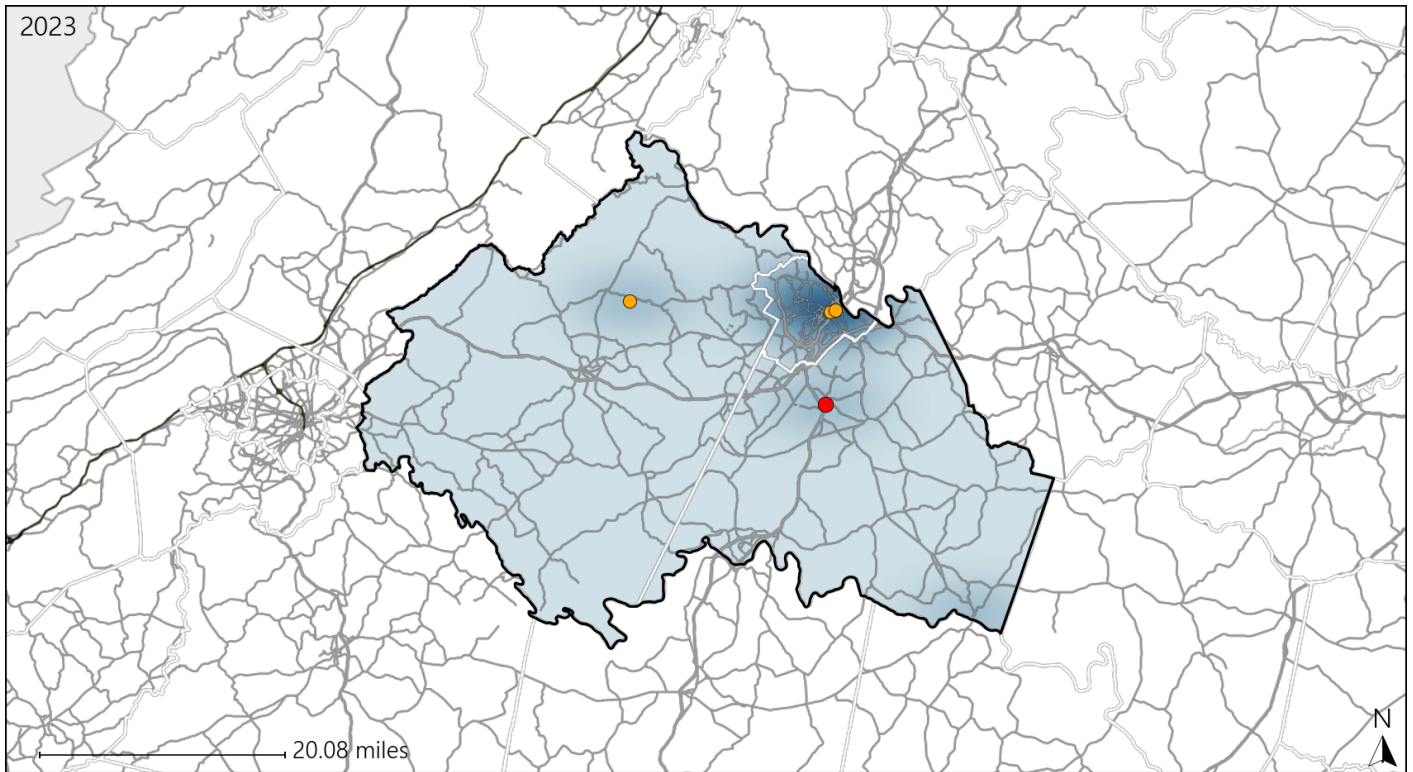


Available Crash Data - Calendar Year (CY)	CY 2020	CY 2021	CY 2022	CY 2023
Total Crashes	2557	2651	2769	2846
Fatal Crashes	24	34	26	23
Injury Crashes	871	904	805	849
Pedestrian-Related Fatal Crashes	5	5	4	2
Percent of Pedestrian-Related Fatal Crashes to Total Fatal Crashes	21%	15%	15%	9%
Pedestrian-Related Injury Crashes	17	19	26	25
Percent of Pedestrian-Related Injury Crashes to Total Injury Crashes	2%	2%	3%	3%

# Virginia Senate District 8 Bicycle Crash Statistics

Report Generated May, 2024

	Count	Highest Time Period(s)	Highest Day(s)	Highest Month(s)
<b>Fatal Crashes</b>	<b>1</b>	<b>3:00pm - 5:59pm</b>	<b>Thursday</b>	<b>May</b>
<b>Bicycle Fatalities</b>	<b>1</b>	(100%)	(100%)	(100%)
<b>Serious Injury Crashes</b>	<b>3</b>	<b>3:00pm - 5:59pm 9:00am - 11:59am</b>	<b>Sunday</b>	<b>March - May</b>
		(66%)	(67%)	(66%)



## Senate District 8 Bicycle-Related Crashes

Interstate Crashes

Non-interstate Crashes

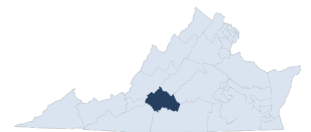
● Fatal

● Fatal

⊕ Serious Injury

● Serious Injury

The blue gradient represents the density of all bicycle-related crashes.

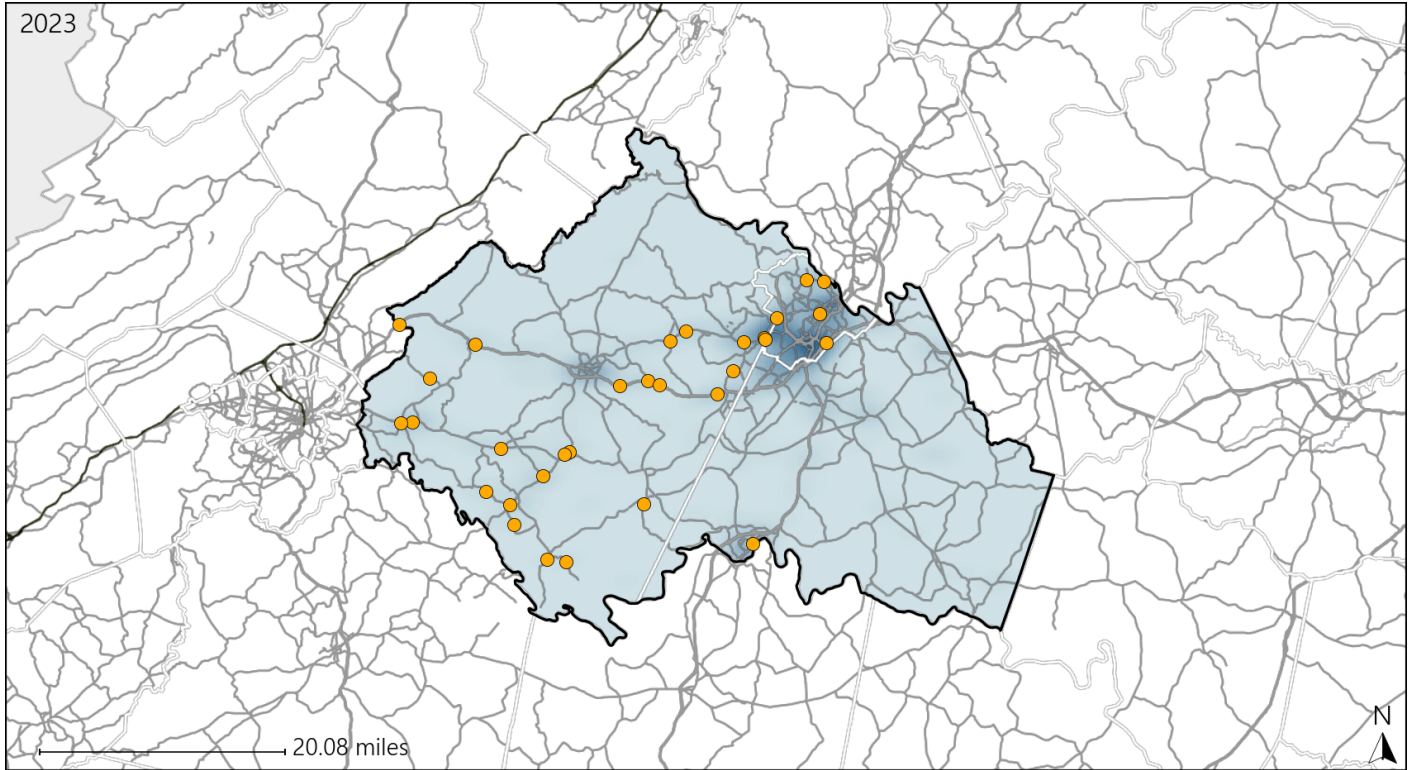


Available Crash Data - Calendar Year (CY)	CY 2020	CY 2021	CY 2022	CY 2023
Total Crashes	2557	2651	2769	2846
Fatal Crashes	24	34	26	23
Injury Crashes	871	904	805	849
Bicycle-Related Fatal Crashes	0	0	0	1
Percent of Bicycle-Related Fatal Crashes to Total Fatal Crashes	0%	0%	0%	4%
Bicycle-Related Injury Crashes	9	6	5	6
Percent of Bicycle-Related Injury Crashes to Total Injury Crashes	1%	1%	1%	1%

# Virginia Senate District 8 Distracted Driving Crash Statistics

Report Generated May, 2024

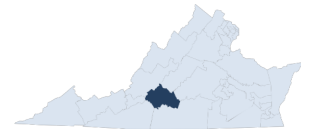
	Count	Highest Time Period(s)	Highest Day(s)	Highest Month(s)
<b>Fatal Crashes</b>	<b>0</b>	-	-	-
<b>Resulting Fatalities</b>	<b>0</b>	-	-	-
<b>Serious Injury Crashes</b>	<b>31</b>	<b>6:00pm - 8:59pm (35%)</b>	<b>Tuesday (26%)</b>	<b>August (26%)</b>



## Senate District 8 Distracted Driving-Related Crashes

- |  |  |
|--|--|
| Interstate Crashes                                   | Non-interstate Crashes                               |
| <span style="color: red;">●</span> Fatal             | <span style="color: red;">●</span> Fatal             |
| <span style="color: orange;">●</span> Serious Injury | <span style="color: orange;">●</span> Serious Injury |

The blue gradient represents the density of all distracted driving-related crashes.



Available Crash Data - Calendar Year (CY)	CY 2020	CY 2021	CY 2022	CY 2023
Total Crashes	2557	2651	2769	2846
Fatal Crashes	24	34	26	23
Injury Crashes	871	904	805	849
Distracted Driving-Related Fatal Crashes	4	7	2	0
Percent of Distracted Driving-Related Fatal Crashes to Total Fatal Crashes	17%	21%	8%	0%
Distracted Driving-Related Injury Crashes	174	164	122	130
Percent of Distracted Driving-Related Injury Crashes to Total Injury Crashes	20%	18%	15%	15%