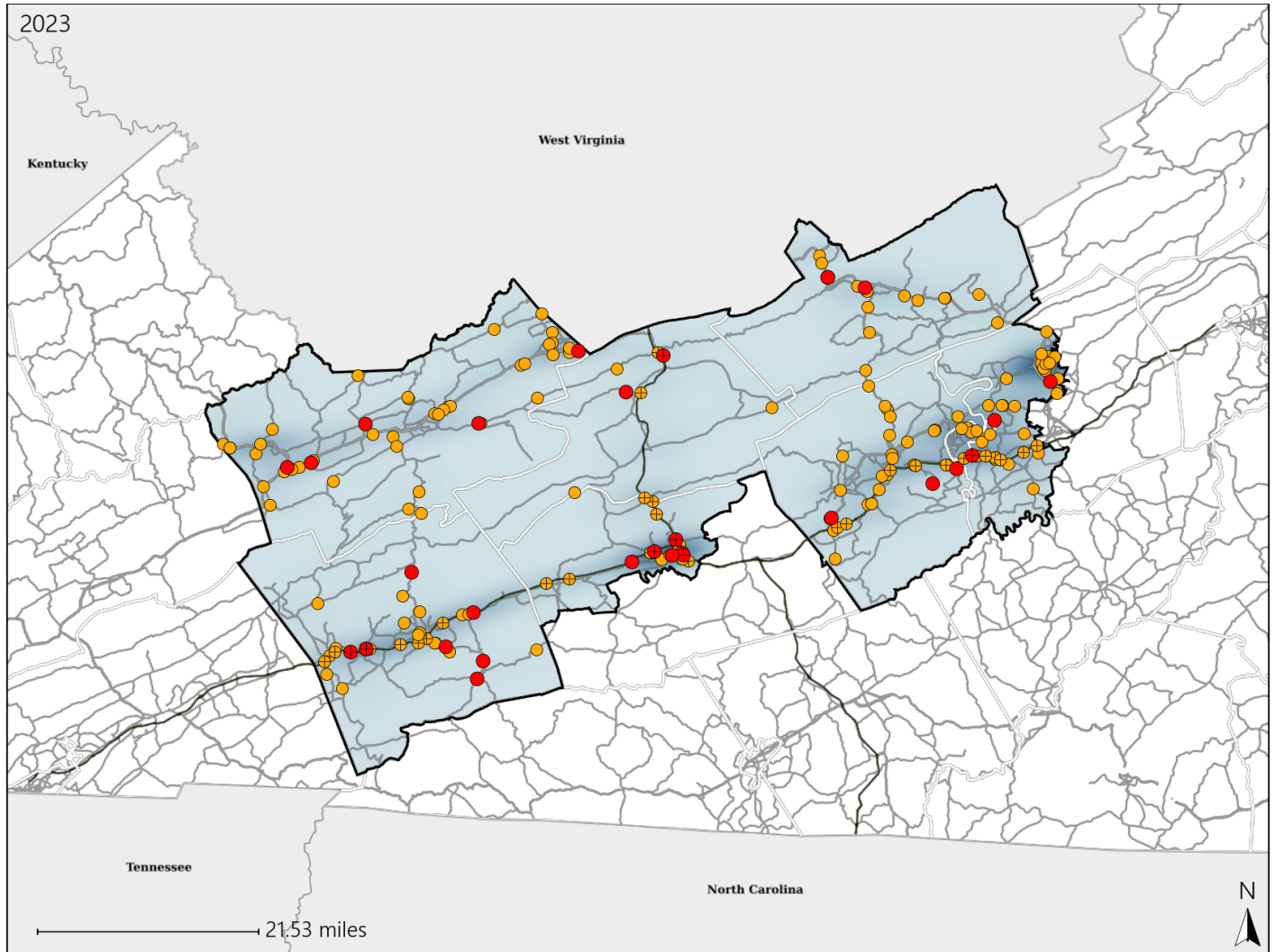


Virginia Senate District 5 Crash Statistics

Report Generated May, 2024

	Count	Highest Time Period(s)	Highest Day(s)	Highest Month(s)
Fatal Crashes	30	6:00am - 8:59am	Friday	November
Resulting Fatalities	33	(23%)	(27%)	(20%)
Serious Injury Crashes	164	Noon - 2:59pm	Saturday	August
		(18%)	(18%)	(13%)



Senate District 5 Crashes

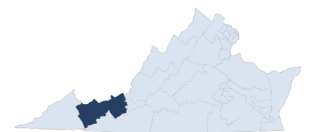
Interstate Crashes

- Fatal
- Serious Injury

Non-interstate Crashes

- Fatal
- Serious Injury

The blue gradient represents the density of all crashes.

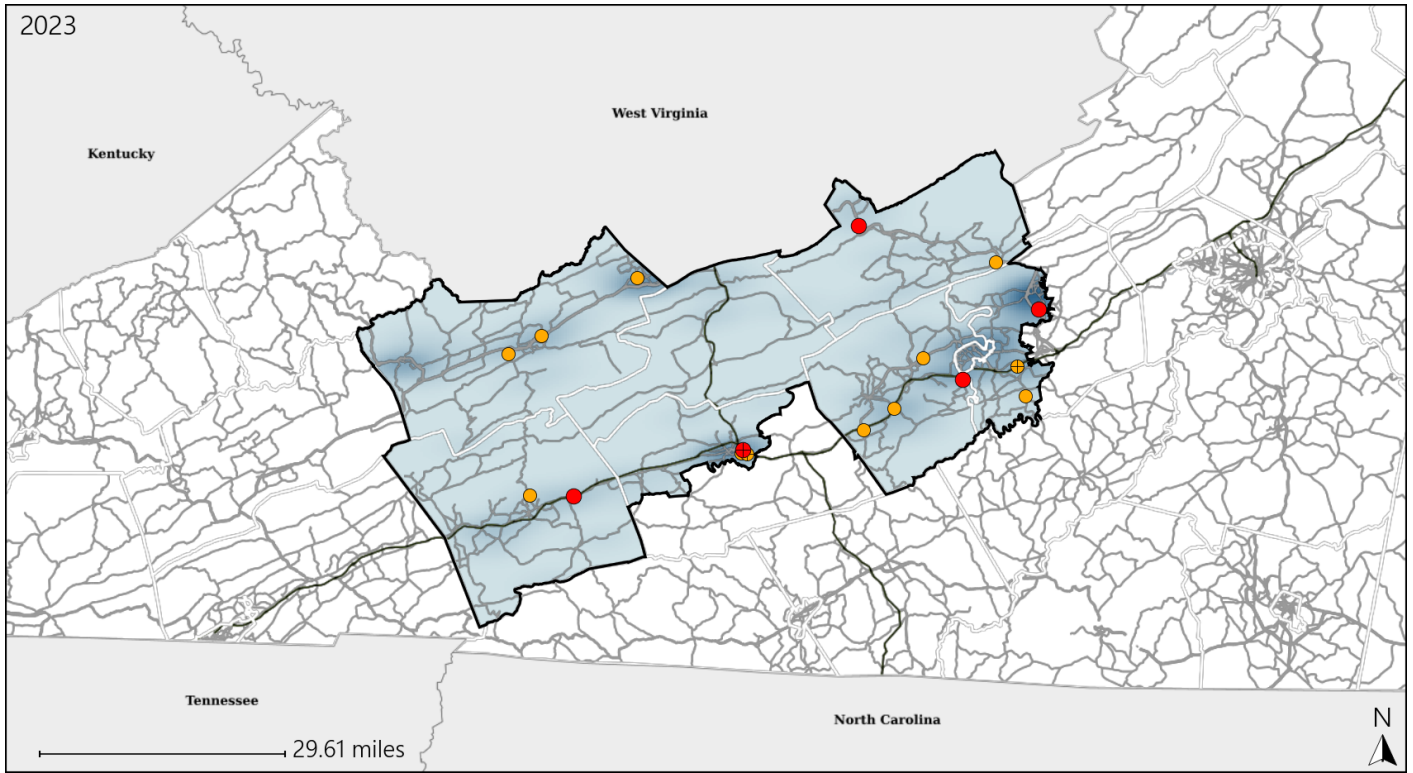


Available Crash Data - Calendar Year (CY)	CY 2020	CY 2021	CY 2022	CY 2023
Total Crashes	2795	3252	3656	3522
Fatal Crashes	34	32	28	30
Injury Crashes	926	1007	1099	1050

Virginia Senate District 5 Alcohol Crash Statistics

Report Generated May, 2024

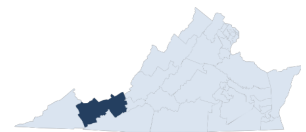
	Count	Highest Time Period(s)	Highest Day(s)	Highest Month(s)
Fatal Crashes	5	3:00am - 5:59am	Friday	January • June
Resulting Fatalities	6	6:00pm - 8:59pm (80%)	(40%)	(40%)
Serious Injury Crashes	13	3:00pm - 5:59pm	Saturday	February • July
		6:00pm - 8:59pm (46%)	(38%)	(46%)



Senate District 5 Alcohol-Related Crashes

Interstate Crashes Non-interstate Crashes
 ● Fatal ● Fatal
 ⊕ Serious Injury ⊕ Serious Injury

The blue gradient represents the density of all alcohol-related crashes.

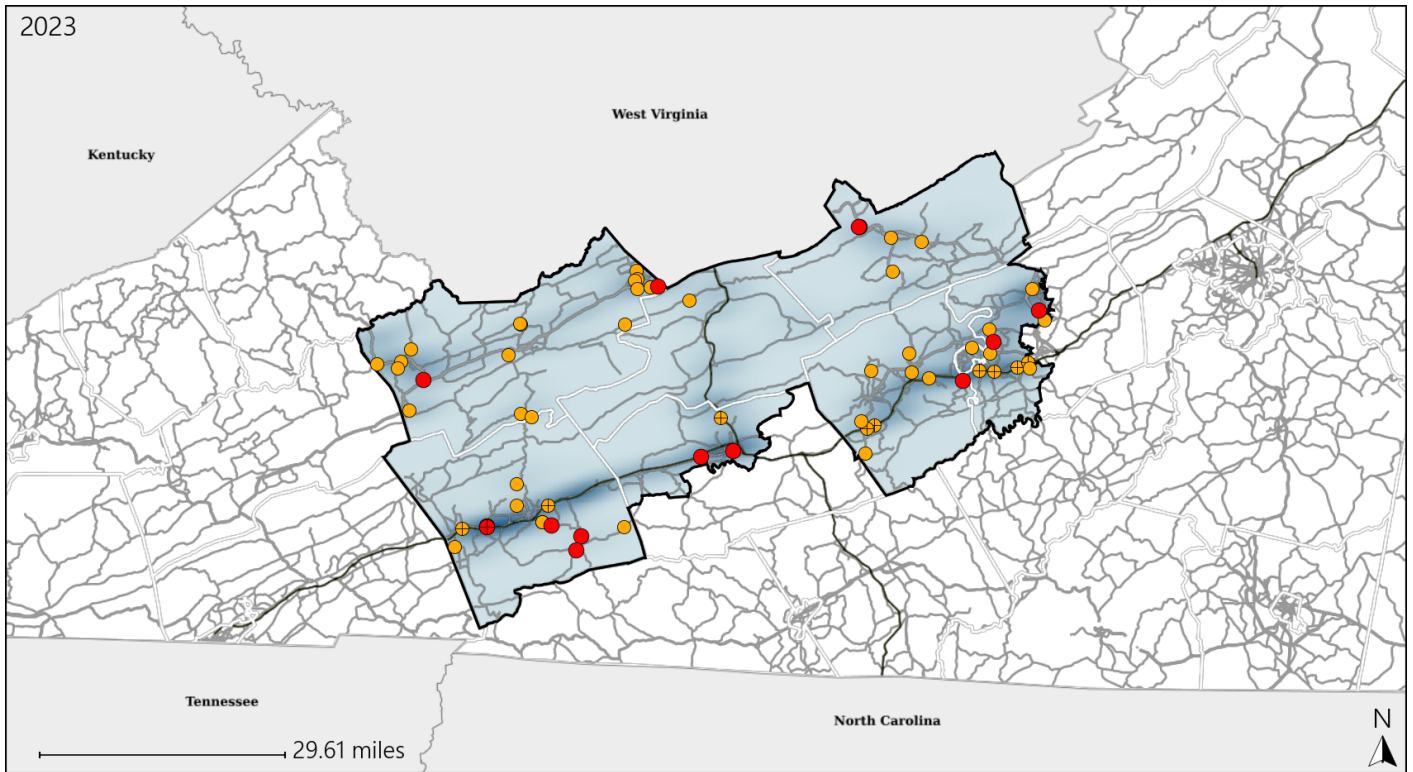


Available Crash Data - Calendar Year (CY)	CY 2020	CY 2021	CY 2022	CY 2023
Total Crashes	2795	3252	3656	3522
Fatal Crashes	34	32	28	30
Injury Crashes	926	1007	1099	1050
Alcohol-Related Fatal Crashes	6	6	1	5
Percent of Alcohol-Related Fatal Crashes to Total Fatal Crashes	18%	19%	4%	17%
Alcohol-Related Injury Crashes	78	56	80	69
Percent of Alcohol-Related Injury Crashes to Total Injury Crashes	8%	6%	7%	7%

Virginia Senate District 5 Speed Crash Statistics

Report Generated May, 2024

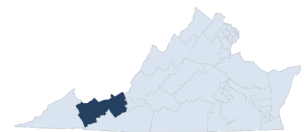
	Count	Highest Time Period(s)	Highest Day(s)	Highest Month(s)
Fatal Crashes	14	6:00am - 8:59am	Tuesday	September
Resulting Fatalities	15	(29%)	(29%)	(21%)
Serious Injury Crashes	48	3:00pm - 5:59pm 9:00am - 11:59am	Saturday	October
		(34%)	(25%)	(19%)



Senate District 5 Speed-Related Crashes

Interstate Crashes Non-interstate Crashes
 ● Fatal ● Fatal
 ⊕ Serious Injury ⊕ Serious Injury

The blue gradient represents the density of all speed-related crashes.

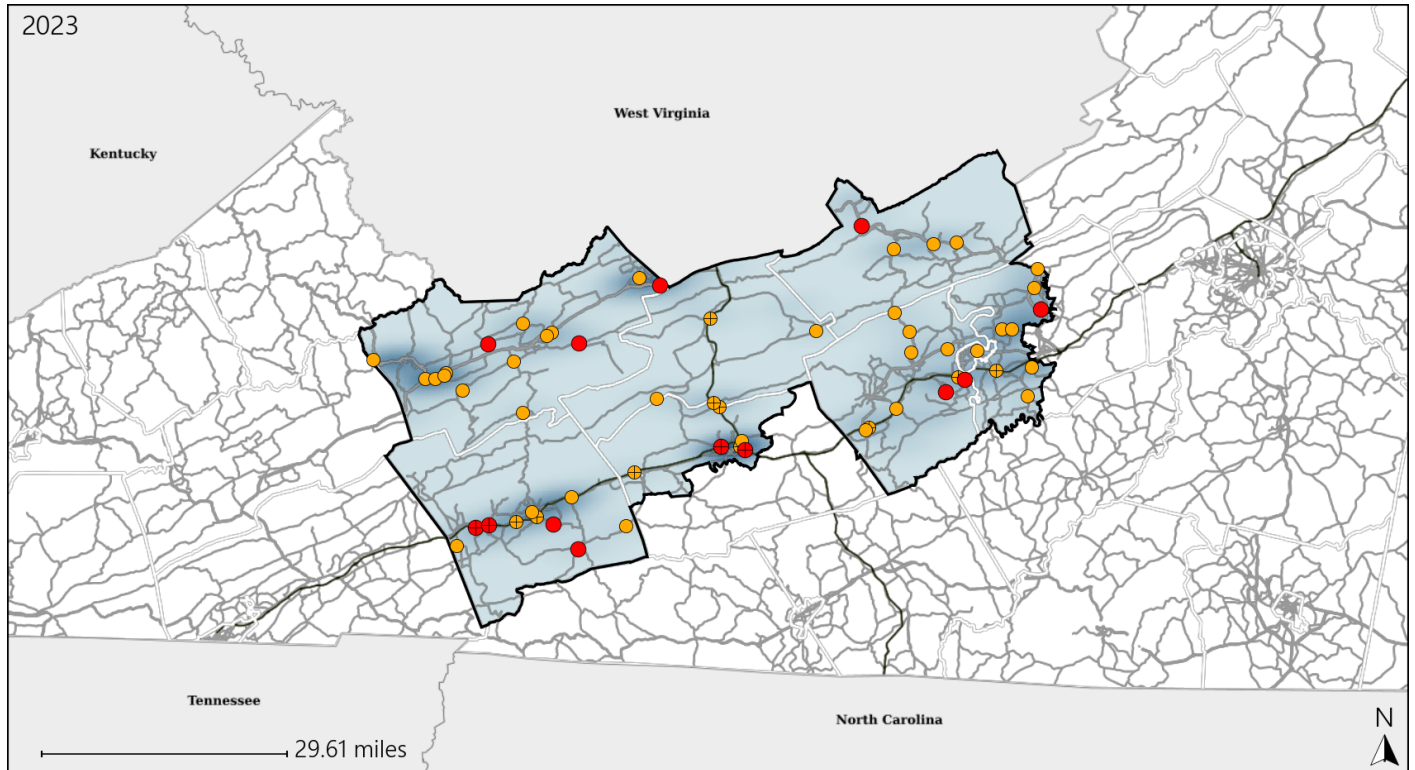


Available Crash Data - Calendar Year (CY)	CY 2020	CY 2021	CY 2022	CY 2023
Total Crashes	2795	3252	3656	3522
Fatal Crashes	34	32	28	30
Injury Crashes	926	1007	1099	1050
Speed-Related Fatal Crashes	13	15	12	14
Percent of Speed-Related Fatal Crashes to Total Fatal Crashes	38%	47%	43%	47%
Speed-Related Injury Crashes	235	230	268	223
Percent of Speed-Related Injury Crashes to Total Injury Crashes	25%	23%	24%	21%

Virginia Senate District 5 Unrestrained Crash Statistics

Report Generated May, 2024

	Count	Highest Time Period(s)	Highest Day(s)	Highest Month(s)
Fatal Crashes	13	6:00am - 8:59am	Thursday	September
Unrestrained Fatalities	13	(31%)	(31%)	(31%)
Serious Injury Crashes	46	9:00am - 11:59am	Wednesday	June
		(22%)	(26%)	(15%)



Senate District 5 Unrestrained-Related Crashes

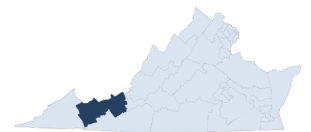
Interstate Crashes

- Fatal
- Serious Injury

Non-interstate Crashes

- Fatal
- Serious Injury

The blue gradient represents the density of all unrestrained-related crashes.

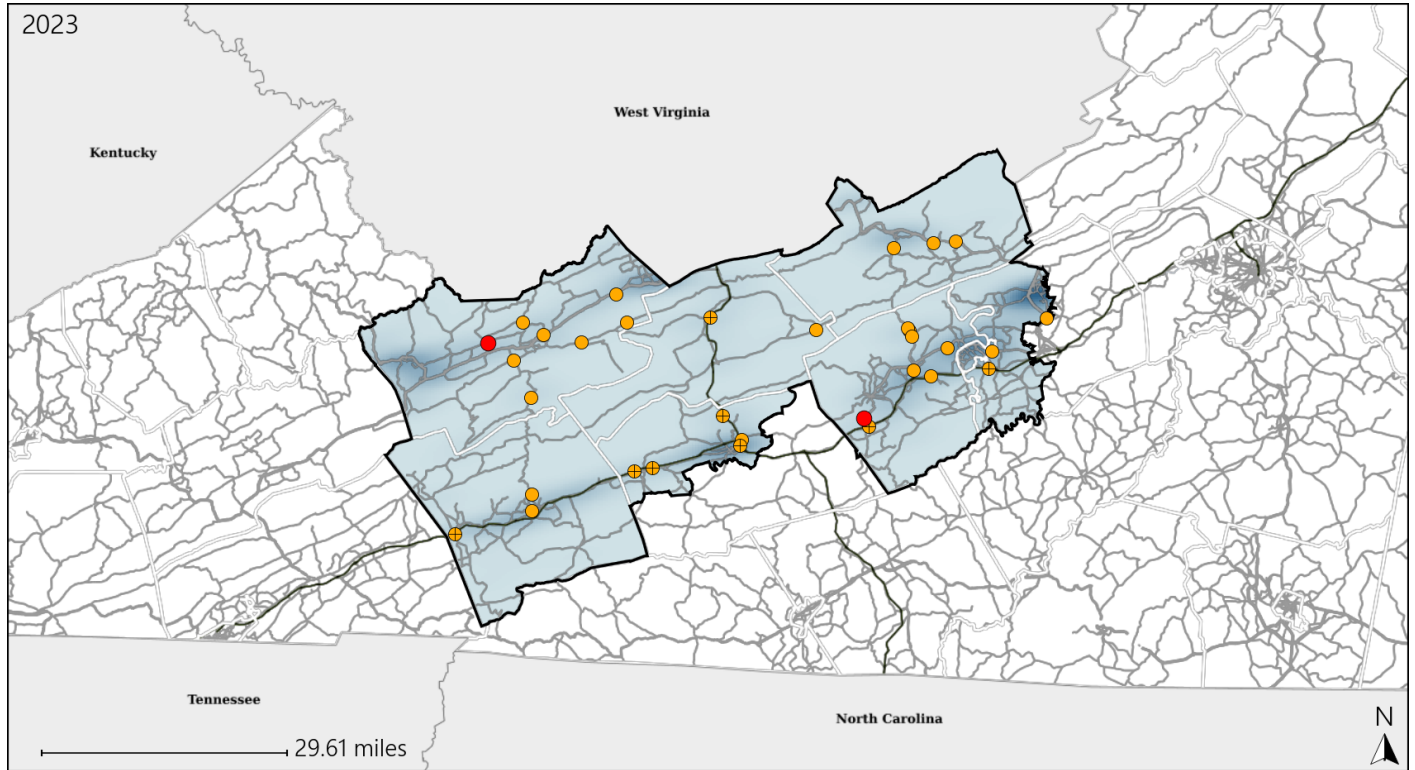


Available Crash Data - Calendar Year (CY)	CY 2020	CY 2021	CY 2022	CY 2023
Total Crashes	2795	3252	3656	3522
Fatalities	35	33	31	33
Injuries	1310	1371	1575	1536
Unrestrained Fatalities	13	12	10	13
Percent of Unrestrained Fatalities to Total Fatalities	37%	36%	32%	39%
Unrestrained Injuries	115	133	162	141
Percent of Unrestrained Injuries to Total Injuries	9%	10%	10%	9%

Virginia Senate District 5 Distracted Driving Crash Statistics

Report Generated May, 2024

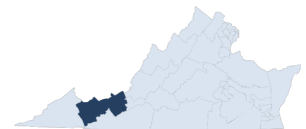
	Count	Highest Time Period(s)	Highest Day(s)	Highest Month(s)
Fatal Crashes	2	3:00pm - 5:59pm	Monday	April • January
Resulting Fatalities	2	6:00am - 8:59am (100%)	(100%)	(100%)
Serious Injury Crashes	30	6:00am - 8:59am (27%)	Saturday (23%)	August (20%)



Senate District 5 Distracted Driving-Related Crashes

- | | |
|--|--|
| Interstate Crashes | Non-interstate Crashes |
| ● Fatal | ● Fatal |
| ● Serious Injury | ● Serious Injury |

The blue gradient represents the density of all distracted driving-related crashes.



Available Crash Data - Calendar Year (CY)	CY 2020	CY 2021	CY 2022	CY 2023
Total Crashes	2795	3252	3656	3522
Fatal Crashes	34	32	28	30
Injury Crashes	926	1007	1099	1050
Distracted Driving-Related Fatal Crashes	1	7	3	2
Percent of Distracted Driving-Related Fatal Crashes to Total Fatal Crashes	3%	22%	11%	7%
Distracted Driving-Related Injury Crashes	174	191	208	215
Percent of Distracted Driving-Related Injury Crashes to Total Injury Crashes	19%	19%	19%	20%