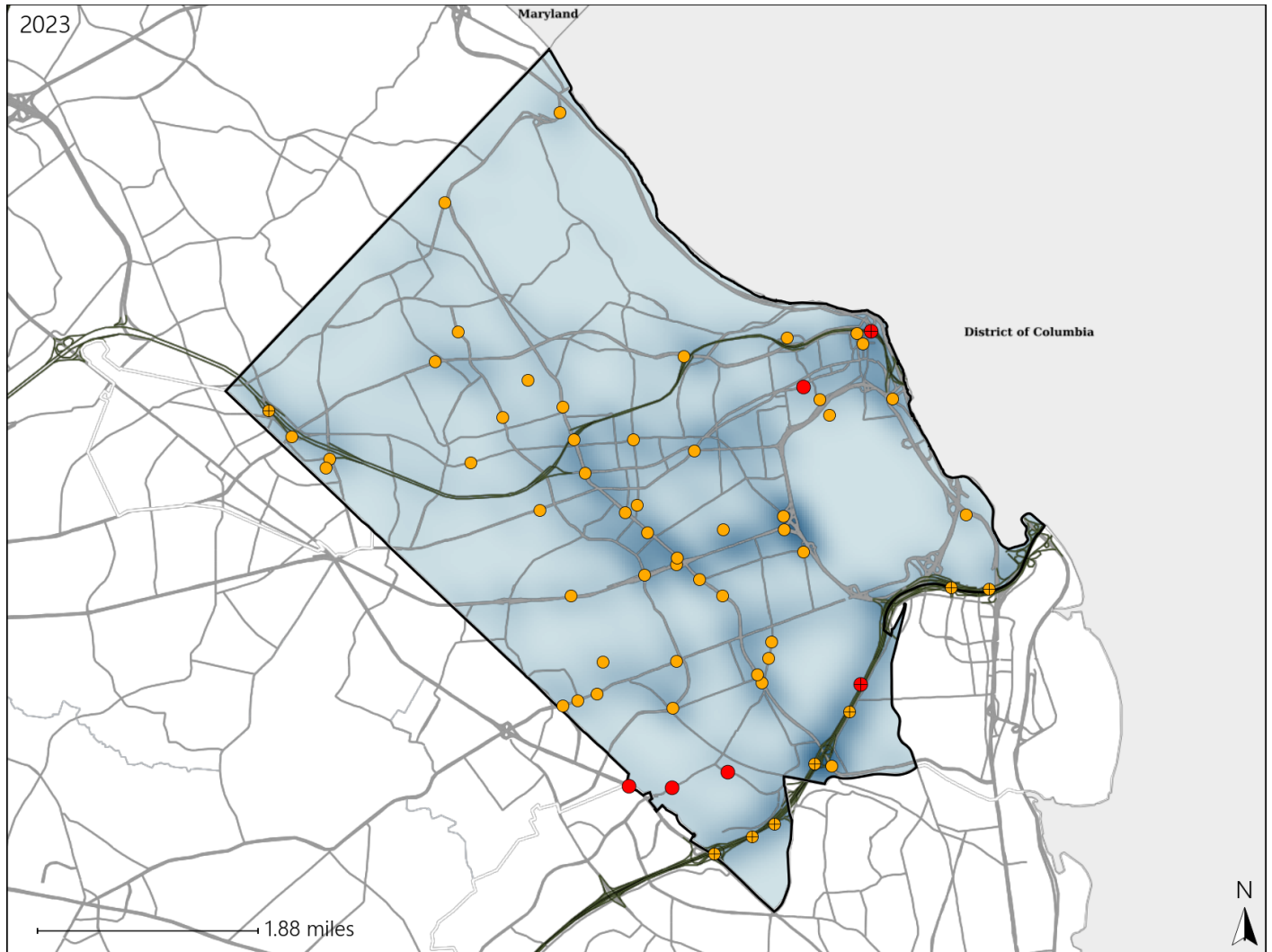


Virginia Senate District 40 Crash Statistics

Report Generated May, 2024

	Count	Highest Time Period(s)	Highest Day(s)	Highest Month(s)
Fatal Crashes	6	3:00am - 5:59am	Saturday • Tuesday	August • February
Resulting Fatalities	7	9:00pm - 11:59pm (66%)	(66%)	(34%)
Serious Injury Crashes	56	9:00pm - 11:59pm (29%)	Wednesday (21%)	November • October (28%)



Senate District 40 Crashes

Interstate Crashes

- Fatal
- Serious Injury

Non-interstate Crashes

- Fatal
- Serious Injury

The blue gradient represents the density of all crashes.

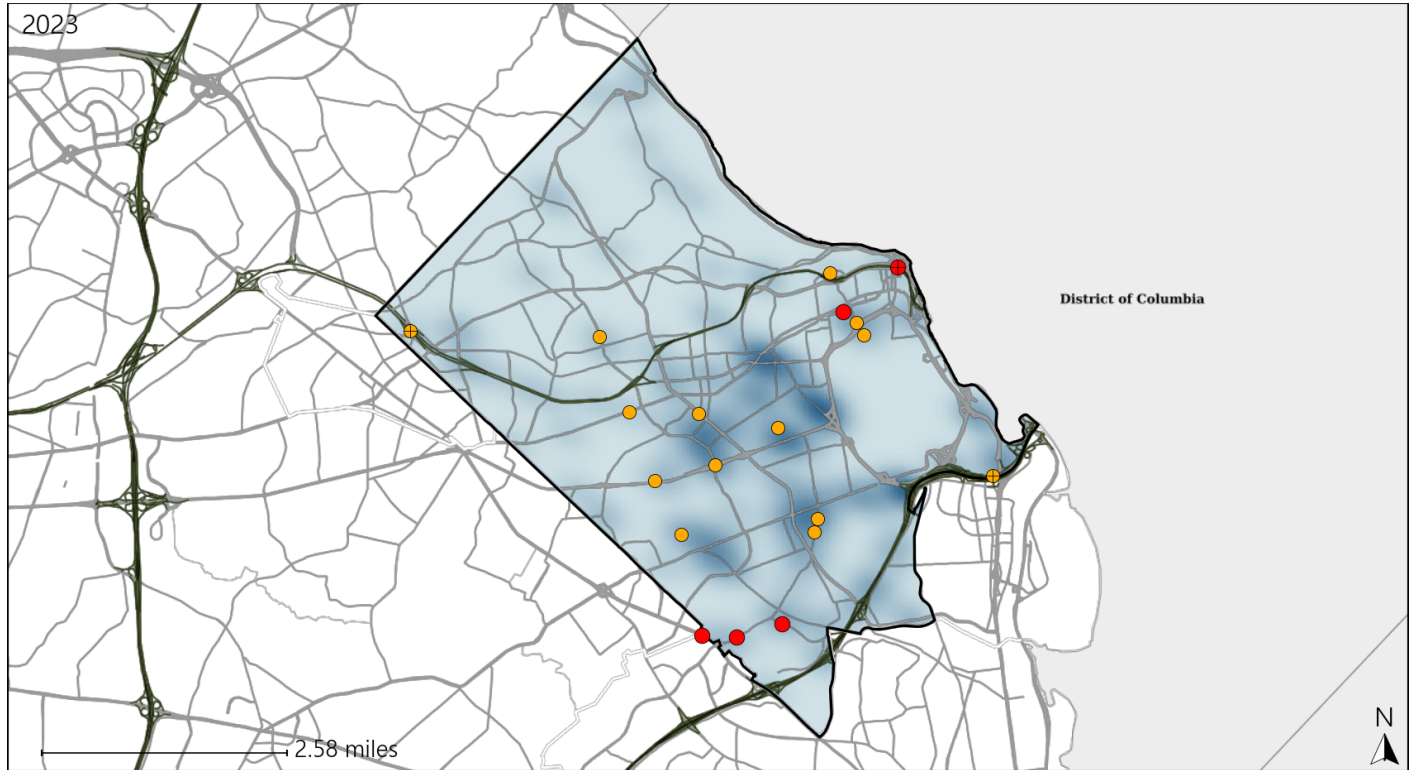


Available Crash Data - Calendar Year (CY)	CY 2020	CY 2021	CY 2022	CY 2023
Total Crashes	1288	1456	1743	1735
Fatal Crashes	3	4	4	6
Injury Crashes	366	430	489	465

Virginia Senate District 40 Alcohol Crash Statistics

Report Generated May, 2024

	Count	Highest Time Period(s)	Highest Day(s)	Highest Month(s)
Fatal Crashes	5	9:00pm - 11:59pm	Tuesday	August • February
Resulting Fatalities	6	Midnight - 2:59am (80%)	(40%)	(40%)
Serious Injury Crashes	14	9:00pm - 11:59pm (50%)	Wednesday (29%)	August • July (42%)



Senate District 40 Alcohol-Related Crashes

Interstate Crashes Non-interstate Crashes
 ● Fatal ● Fatal
 ● Serious Injury ● Serious Injury

The blue gradient represents the density of all alcohol-related crashes.

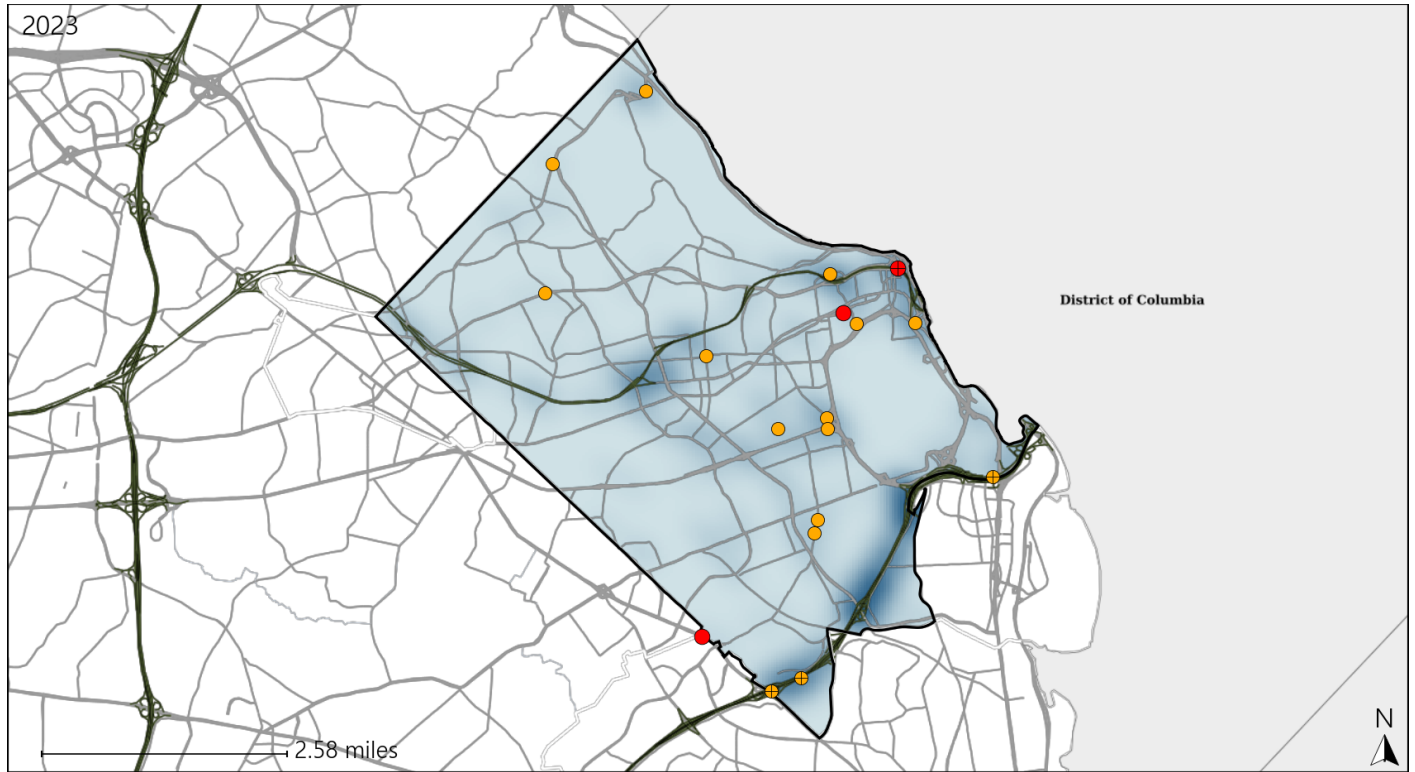


Available Crash Data - Calendar Year (CY)	CY 2020	CY 2021	CY 2022	CY 2023
Total Crashes	1288	1456	1743	1735
Fatal Crashes	3	4	4	6
Injury Crashes	366	430	489	465
Alcohol-Related Fatal Crashes	1	0	3	5
Percent of Alcohol-Related Fatal Crashes to Total Fatal Crashes	33%	0%	75%	83%
Alcohol-Related Injury Crashes	31	43	49	59
Percent of Alcohol-Related Injury Crashes to Total Injury Crashes	8%	10%	10%	13%

Virginia Senate District 40 Speed Crash Statistics

Report Generated May, 2024

	Count	Highest Time Period(s)	Highest Day(s)	Highest Month(s)
Fatal Crashes	3	9:00pm - 11:59pm	Friday • Monday	August • March
Resulting Fatalities	3	(67%)	(66%)	(66%)
Serious Injury Crashes	15	9:00pm - 11:59pm	Monday	July
		(47%)	(27%)	(33%)



Senate District 40 Speed-Related Crashes

Interstate Crashes Non-interstate Crashes
 ● Fatal ● Fatal
 ⊕ Serious Injury ⊕ Serious Injury

The blue gradient represents the density of all speed-related crashes.

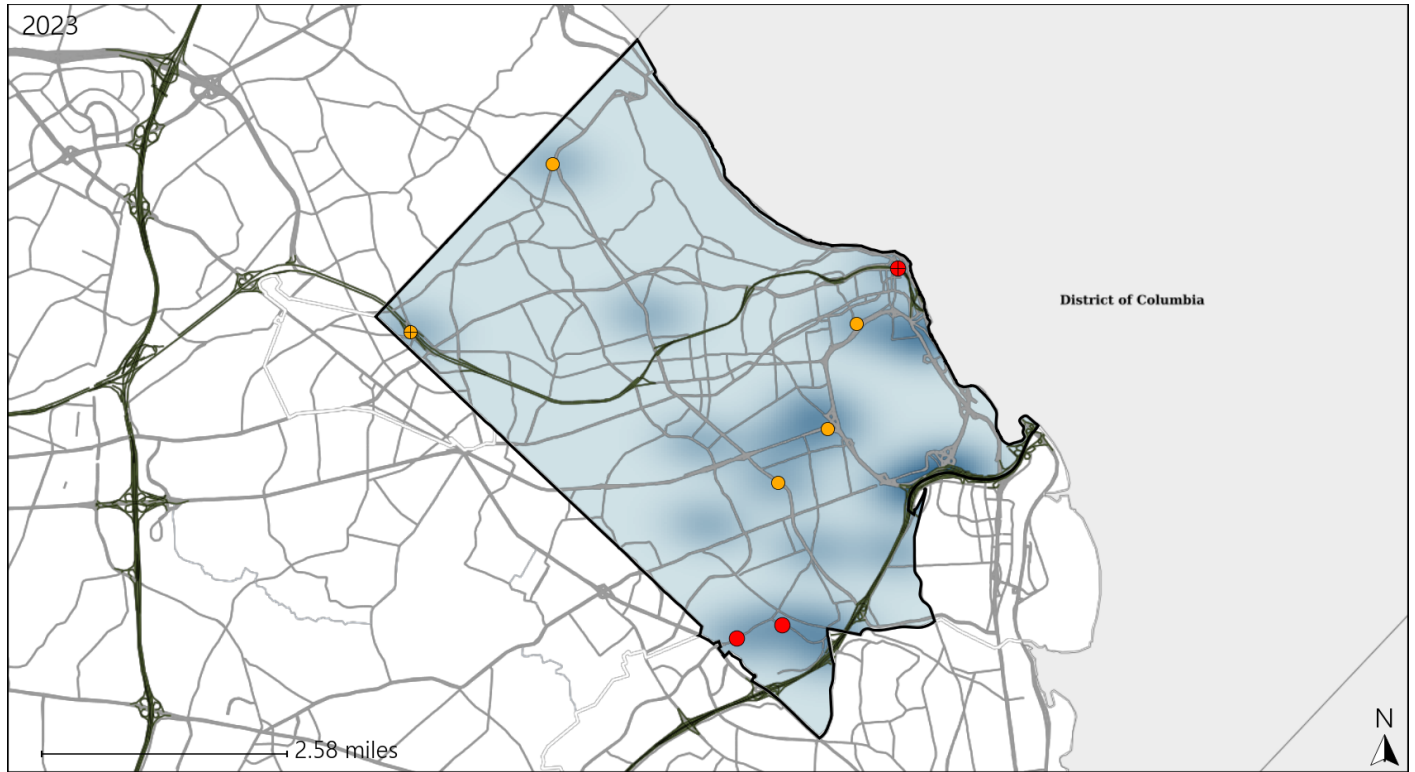


Available Crash Data - Calendar Year (CY)	CY 2020	CY 2021	CY 2022	CY 2023
Total Crashes	1288	1456	1743	1735
Fatal Crashes	3	4	4	6
Injury Crashes	366	430	489	465
Speed-Related Fatal Crashes	1	1	1	3
Percent of Speed-Related Fatal Crashes to Total Fatal Crashes	33%	25%	25%	50%
Speed-Related Injury Crashes	93	101	107	99
Percent of Speed-Related Injury Crashes to Total Injury Crashes	25%	23%	22%	21%

Virginia Senate District 40 Unrestrained Crash Statistics

Report Generated May, 2024

	Count	Highest Time Period(s)	Highest Day(s)	Highest Month(s)
Fatal Crashes	3	Midnight - 2:59am	Tuesday	February • July
Unrestrained Fatalities	3	(67%)	(67%)	(66%)
Serious Injury Crashes	5	9:00pm - 11:59pm	Monday	April • November
		(60%)	(40%)	(80%)



Senate District 40 Unrestrained-Related Crashes

Interstate Crashes

- Fatal
- Serious Injury

Non-interstate Crashes

- Fatal
- Serious Injury

The blue gradient represents the density of all unrestrained-related crashes.

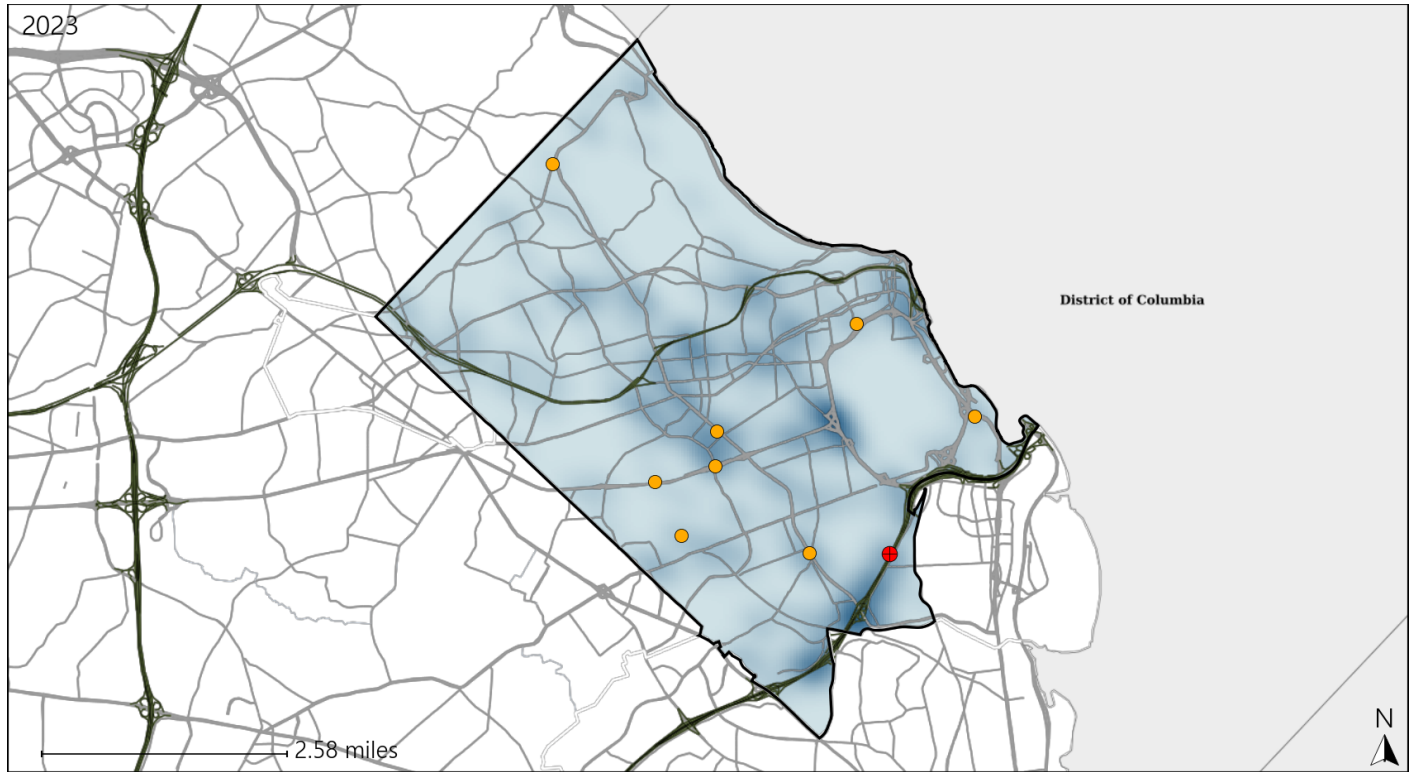


Available Crash Data - Calendar Year (CY)	CY 2020	CY 2021	CY 2022	CY 2023
Total Crashes	1288	1456	1743	1735
Fatalities	3	4	4	7
Injuries	517	622	728	676
Unrestrained Fatalities	0	2	1	3
Percent of Unrestrained Fatalities to Total Fatalities	0%	50%	25%	43%
Unrestrained Injuries	10	29	27	25
Percent of Unrestrained Injuries to Total Injuries	2%	5%	4%	4%

Virginia Senate District 40 Distracted Driving Crash Statistics

Report Generated May, 2024

	Count	Highest Time Period(s)	Highest Day(s)	Highest Month(s)
Fatal Crashes	1	3:00am - 5:59am	Saturday	November
Resulting Fatalities	1	(100%)	(100%)	(100%)
Serious Injury Crashes	8	Midnight - 2:59am	Wednesday	October
		(38%)	(50%)	(38%)



Senate District 40 Distracted Driving-Related Crashes

- | | |
|--------------------|------------------------|
| Interstate Crashes | Non-interstate Crashes |
| Fatal | Fatal |
| Serious Injury | Serious Injury |

The blue gradient represents the density of all distracted driving-related crashes.



Available Crash Data - Calendar Year (CY)	CY 2020	CY 2021	CY 2022	CY 2023
Total Crashes	1288	1456	1743	1735
Fatal Crashes	3	4	4	6
Injury Crashes	366	430	489	465
Distracted Driving-Related Fatal Crashes	3	1	0	1
Percent of Distracted Driving-Related Fatal Crashes to Total Fatal Crashes	100%	25%	0%	17%
Distracted Driving-Related Injury Crashes	73	77	92	76
Percent of Distracted Driving-Related Injury Crashes to Total Injury Crashes	20%	18%	19%	16%