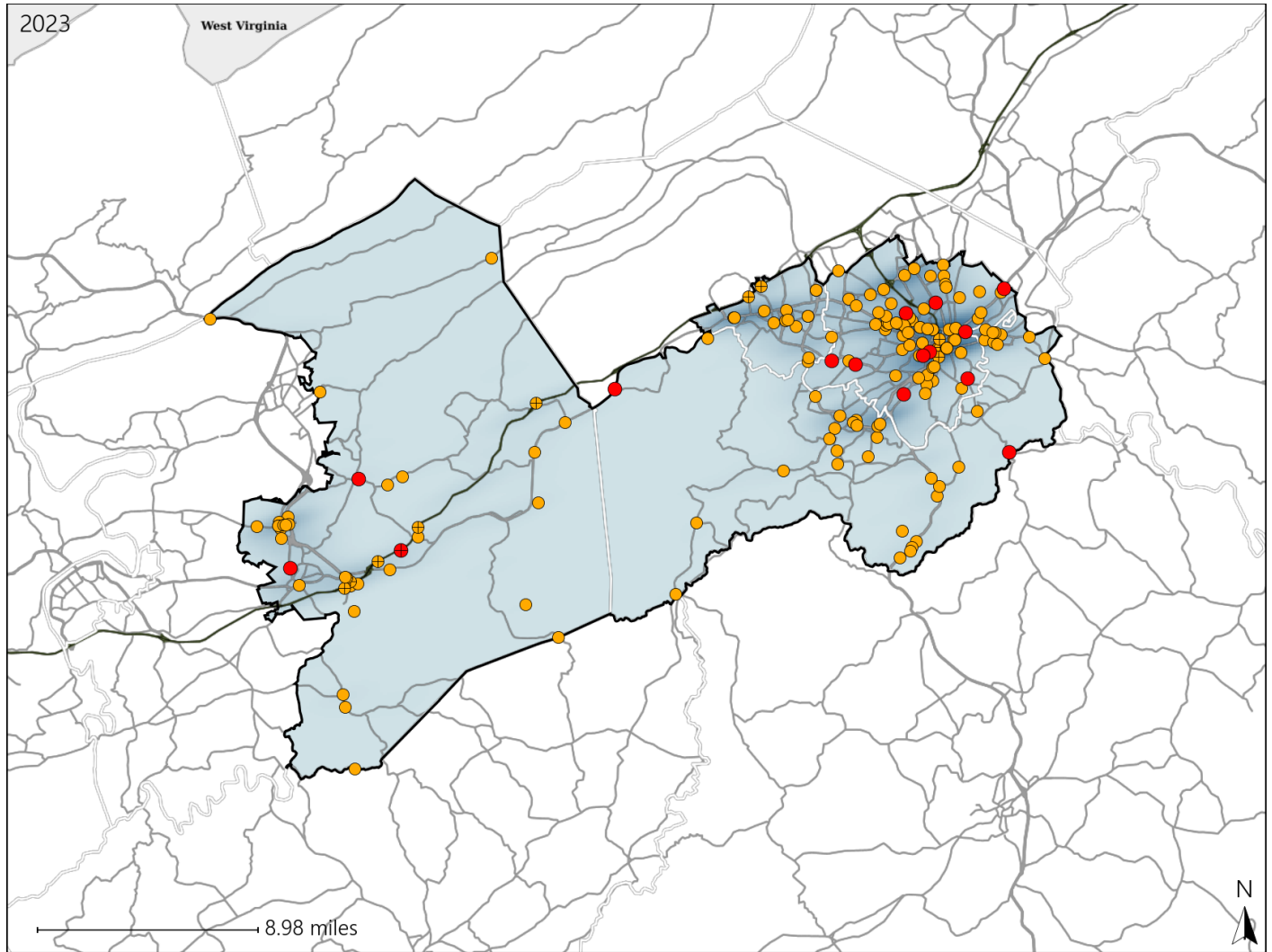


# Virginia Senate District 4 Crash Statistics

Report Generated May, 2024

	Count	Highest Time Period(s)	Highest Day(s)	Highest Month(s)
<b>Fatal Crashes</b>	<b>15</b>	3:00am - 5:59am	Tuesday	November
<b>Resulting Fatalities</b>	<b>19</b>	(20%)	(40%)	(20%)
<b>Serious Injury Crashes</b>	<b>156</b>	3:00pm - 5:59pm	Monday	January • October
		(26%)	(17%)	(24%)



### Senate District 4 Crashes

Interstate Crashes

- Fatal
- Serious Injury

Non-interstate Crashes

- Fatal
- Serious Injury

The blue gradient represents the density of all crashes.

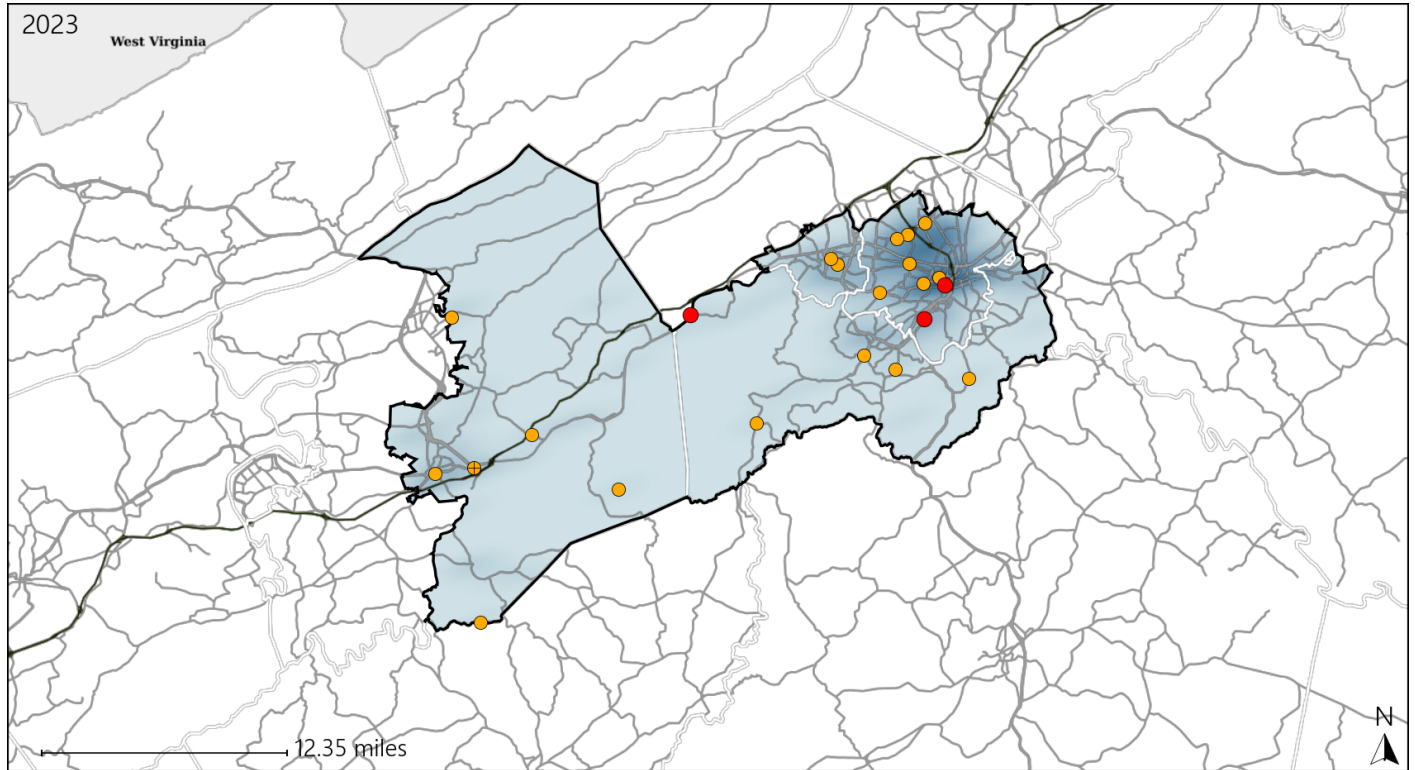


Available Crash Data - Calendar Year (CY)	CY 2020	CY 2021	CY 2022	CY 2023
Total Crashes	3337	3655	4039	4241
Fatal Crashes	22	13	15	15
Injury Crashes	980	1035	1089	1114

# Virginia Senate District 4 Alcohol Crash Statistics

Report Generated May, 2024

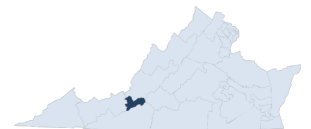
	Count	Highest Time Period(s)	Highest Day(s)	Highest Month(s)
<b>Fatal Crashes</b>	<b>3</b>	6:00am - 8:59am	Tuesday	January - June
<b>Resulting Fatalities</b>	<b>4</b>	9:00pm - 11:59pm (66%)	(67%)	(66%)
<b>Serious Injury Crashes</b>	<b>19</b>	6:00pm - 8:59pm (37%)	Saturday (26%)	March (21%)



### Senate District 4 Alcohol-Related Crashes

Interstate Crashes                      Non-interstate Crashes  
 ● Fatal                                      ● Fatal  
 ● Serious Injury                          ● Serious Injury

The blue gradient represents the density of all alcohol-related crashes.

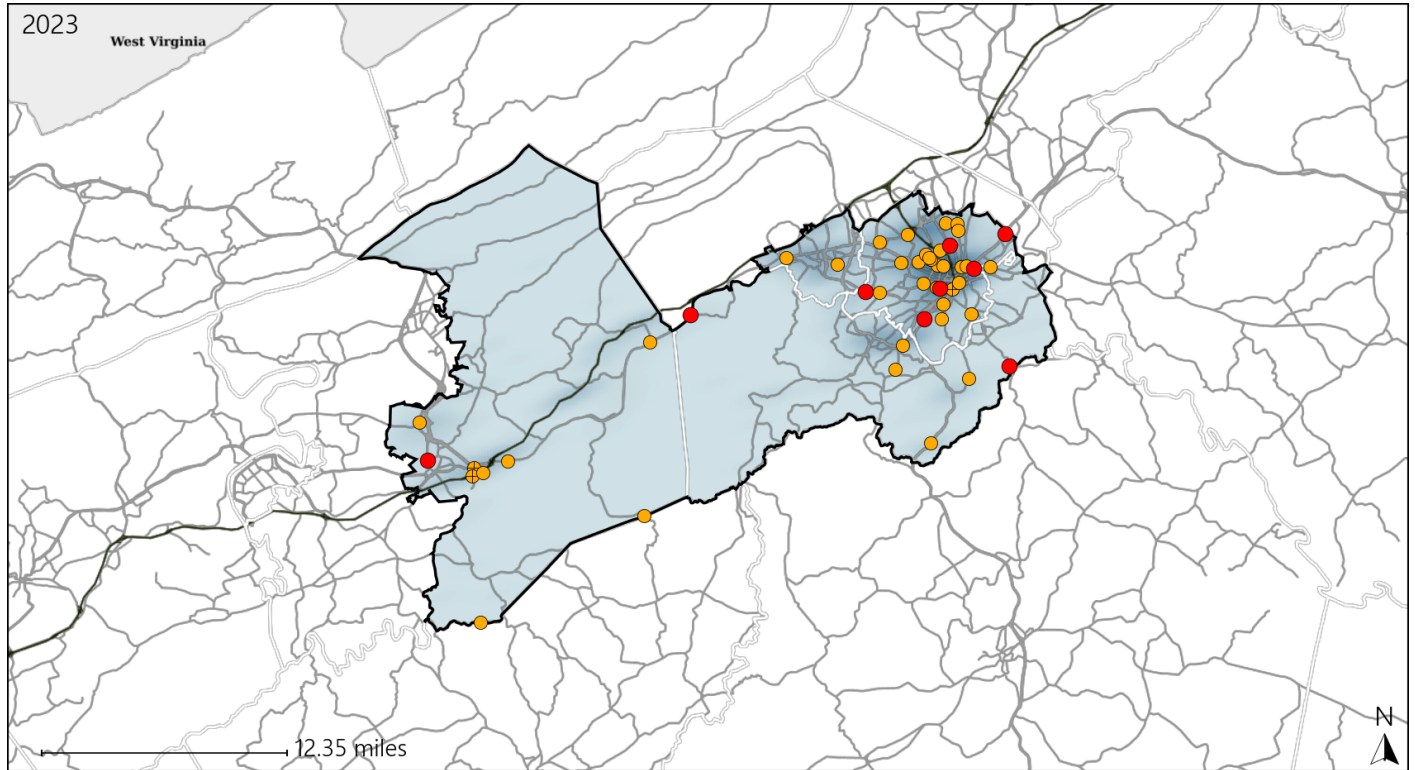


Available Crash Data - Calendar Year (CY)	CY 2020	CY 2021	CY 2022	CY 2023
Total Crashes	3337	3655	4039	4241
Fatal Crashes	22	13	15	15
Injury Crashes	980	1035	1089	1114
Alcohol-Related Fatal Crashes	9	2	3	3
Percent of Alcohol-Related Fatal Crashes to Total Fatal Crashes	41%	15%	20%	20%
Alcohol-Related Injury Crashes	72	82	84	64
Percent of Alcohol-Related Injury Crashes to Total Injury Crashes	7%	8%	8%	6%

# Virginia Senate District 4 Speed Crash Statistics

Report Generated May, 2024

	Count	Highest Time Period(s)	Highest Day(s)	Highest Month(s)
<b>Fatal Crashes</b>	<b>9</b>	3:00am - 5:59am	Monday • Tuesday	August • January
<b>Resulting Fatalities</b>	<b>10</b>	3:00pm - 5:59pm (44%)	(66%)	(44%)
<b>Serious Injury Crashes</b>	<b>38</b>	3:00pm - 5:59pm (29%)	Saturday (24%)	December • February (26%)



### Senate District 4 Speed-Related Crashes

Interstate Crashes

Non-interstate Crashes

- Fatal
- Serious Injury

- Fatal
- Serious Injury

The blue gradient represents the density of all speed-related crashes.

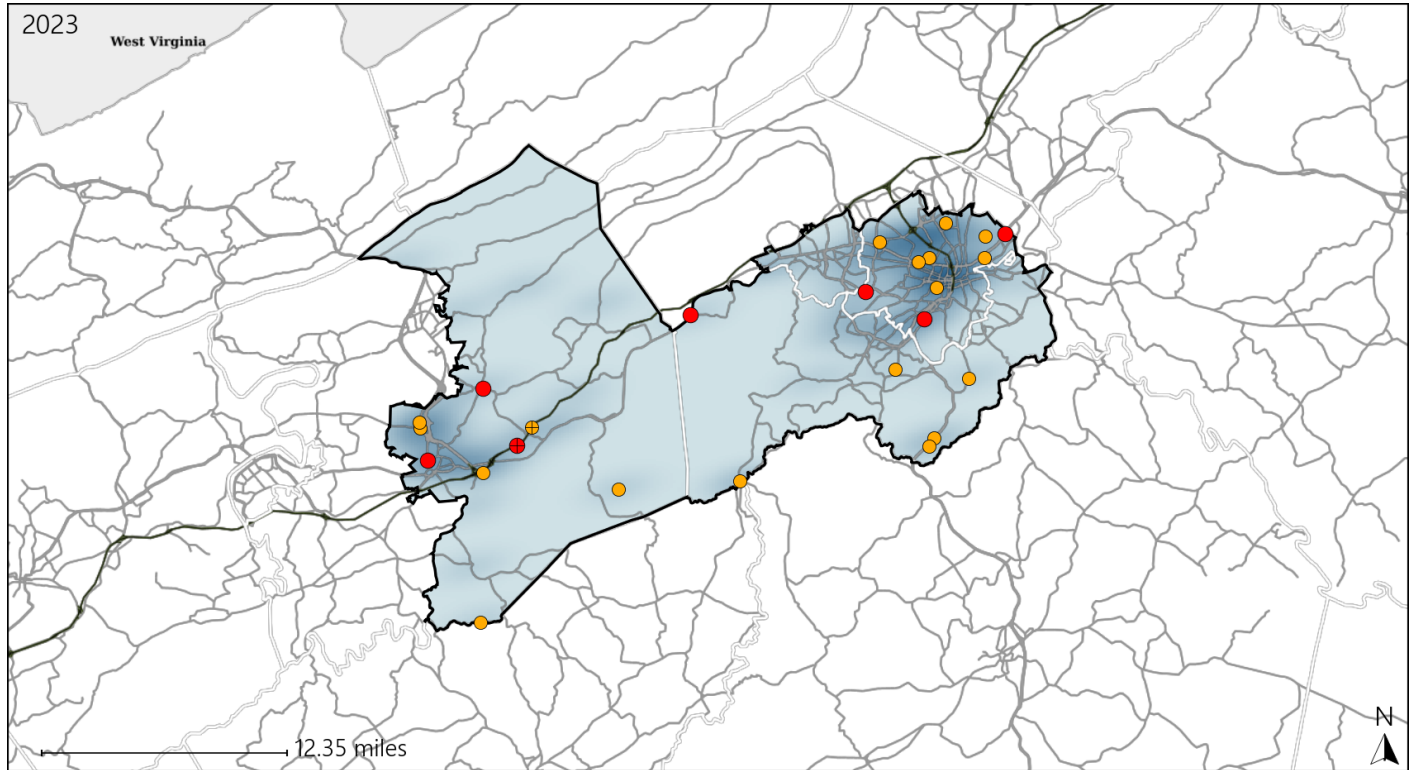


Available Crash Data - Calendar Year (CY)	CY 2020	CY 2021	CY 2022	CY 2023
Total Crashes	3337	3655	4039	4241
Fatal Crashes	22	13	15	15
Injury Crashes	980	1035	1089	1114
Speed-Related Fatal Crashes	11	3	7	9
Percent of Speed-Related Fatal Crashes to Total Fatal Crashes	50%	23%	47%	60%
Speed-Related Injury Crashes	183	194	241	212
Percent of Speed-Related Injury Crashes to Total Injury Crashes	19%	19%	22%	19%

# Virginia Senate District 4 Unrestrained Crash Statistics

Report Generated May, 2024

	Count	Highest Time Period(s)	Highest Day(s)	Highest Month(s)
<b>Fatal Crashes</b>	<b>7</b>	3:00am - 5:59am	Tuesday	January • November
<b>Unrestrained Fatalities</b>	<b>10</b>	3:00pm - 5:59pm (58%)	(43%)	(58%)
<b>Serious Injury Crashes</b>	<b>18</b>	3:00pm - 5:59pm (33%)	Thursday (28%)	August • February (34%)



### Senate District 4 Unrestrained-Related Crashes

Interstate Crashes

Non-interstate Crashes

- Fatal
- Serious Injury

- Fatal
- Serious Injury

The blue gradient represents the density of all unrestrained-related crashes.



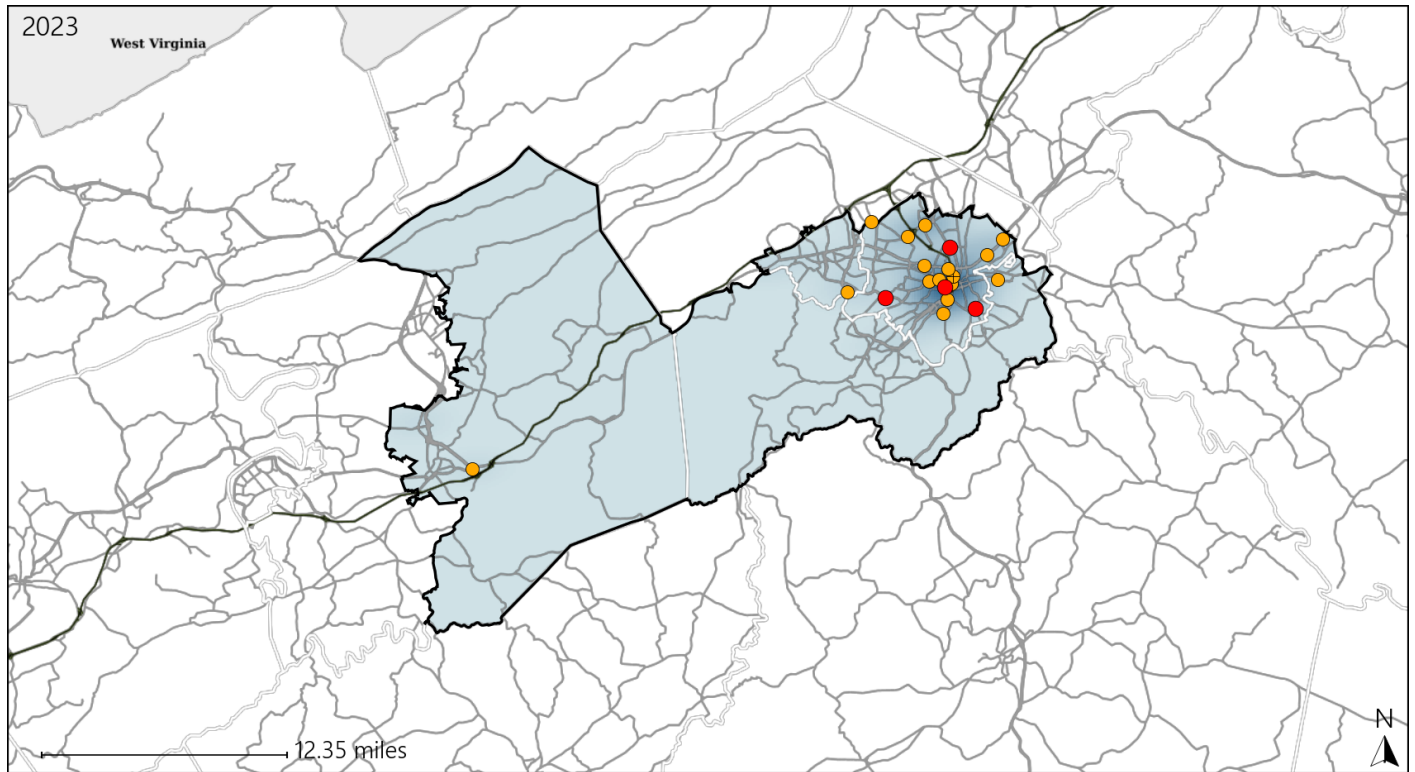
Available Crash Data - Calendar Year (CY)	CY 2020	CY 2021	CY 2022	CY 2023
Total Crashes	3337	3655	4039	4241
Fatalities	22	13	18	19
Injuries	1428	1460	1559	1585
Unrestrained Fatalities	4	4	5	10
Percent of Unrestrained Fatalities to Total Fatalities	18%	31%	28%	53%
Unrestrained Injuries	76	99	94	80
Percent of Unrestrained Injuries to Total Injuries	5%	7%	6%	5%



# Virginia Senate District 4 Pedestrian Crash Statistics

Report Generated May, 2024

	Count	Highest Time Period(s)	Highest Day(s)	Highest Month(s)
<b>Fatal Crashes</b>	<b>4</b>	<b>9:00pm - 11:59pm</b>	<b>Friday • Tuesday</b>	<b>April</b>
<b>Pedestrian Fatalities</b>	<b>4</b>	(50%)	(100%)	(50%)
<b>Serious Injury Crashes</b>	<b>16</b>	<b>6:00am - 8:59am</b> <b>6:00pm - 8:59pm</b>	<b>Friday • Wednesday</b>	<b>October</b>
		(38%)	(50%)	(25%)



### Senate District 4 Pedestrian-Related Crashes

Interstate Crashes

Non-interstate Crashes

- Fatal
- Serious Injury

- Fatal
- Serious Injury

The blue gradient represents the density of all pedestrian-related crashes.

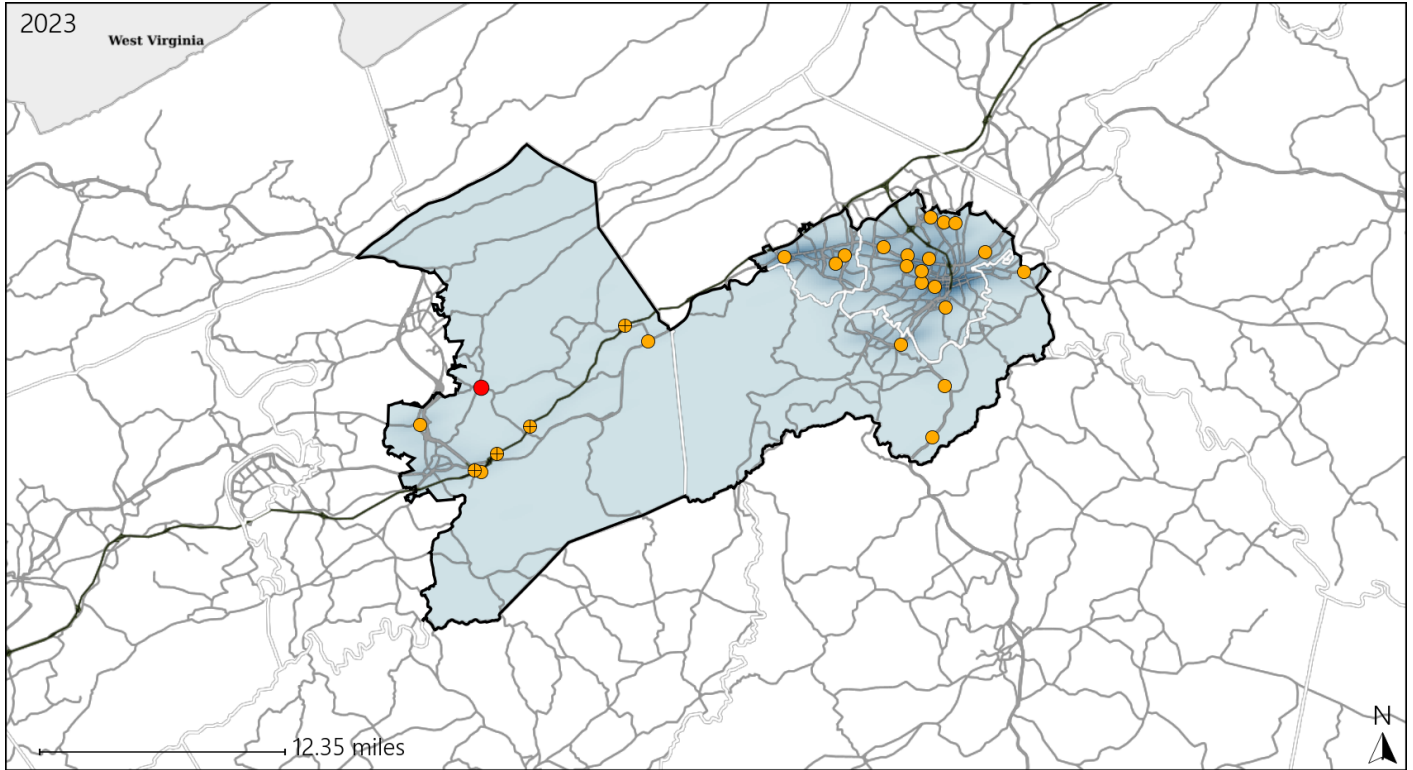


Available Crash Data - Calendar Year (CY)	CY 2020	CY 2021	CY 2022	CY 2023
Total Crashes	3337	3655	4039	4241
Fatal Crashes	22	13	15	15
Injury Crashes	980	1035	1089	1114
Pedestrian-Related Fatal Crashes	7	1	4	4
Percent of Pedestrian-Related Fatal Crashes to Total Fatal Crashes	32%	8%	27%	27%
Pedestrian-Related Injury Crashes	48	42	49	49
Percent of Pedestrian-Related Injury Crashes to Total Injury Crashes	5%	4%	4%	4%

# Virginia Senate District 4 Distracted Driving Crash Statistics

Report Generated May, 2024

	Count	Highest Time Period(s)	Highest Day(s)	Highest Month(s)
<b>Fatal Crashes</b>	<b>1</b>	<b>6:00am - 8:59am</b>	<b>Wednesday</b>	<b>November</b>
<b>Resulting Fatalities</b>	<b>1</b>	(100%)	(100%)	(100%)
<b>Serious Injury Crashes</b>	<b>26</b>	<b>3:00pm - 5:59pm</b>	<b>Friday • Monday</b>	<b>July</b>
		(35%)	(38%)	(23%)



## Senate District 4 Distracted Driving-Related Crashes

- |                    |                        |
|--------------------|------------------------|
| Interstate Crashes | Non-interstate Crashes |
| Fatal              | Fatal                  |
| Serious Injury     | Serious Injury         |

The blue gradient represents the density of all distracted driving-related crashes.



Available Crash Data - Calendar Year (CY)	CY 2020	CY 2021	CY 2022	CY 2023
Total Crashes	3337	3655	4039	4241
Fatal Crashes	22	13	15	15
Injury Crashes	980	1035	1089	1114
Distracted Driving-Related Fatal Crashes	5	4	3	1
Percent of Distracted Driving-Related Fatal Crashes to Total Fatal Crashes	23%	31%	20%	7%
Distracted Driving-Related Injury Crashes	210	225	227	203
Percent of Distracted Driving-Related Injury Crashes to Total Injury Crashes	21%	22%	21%	18%