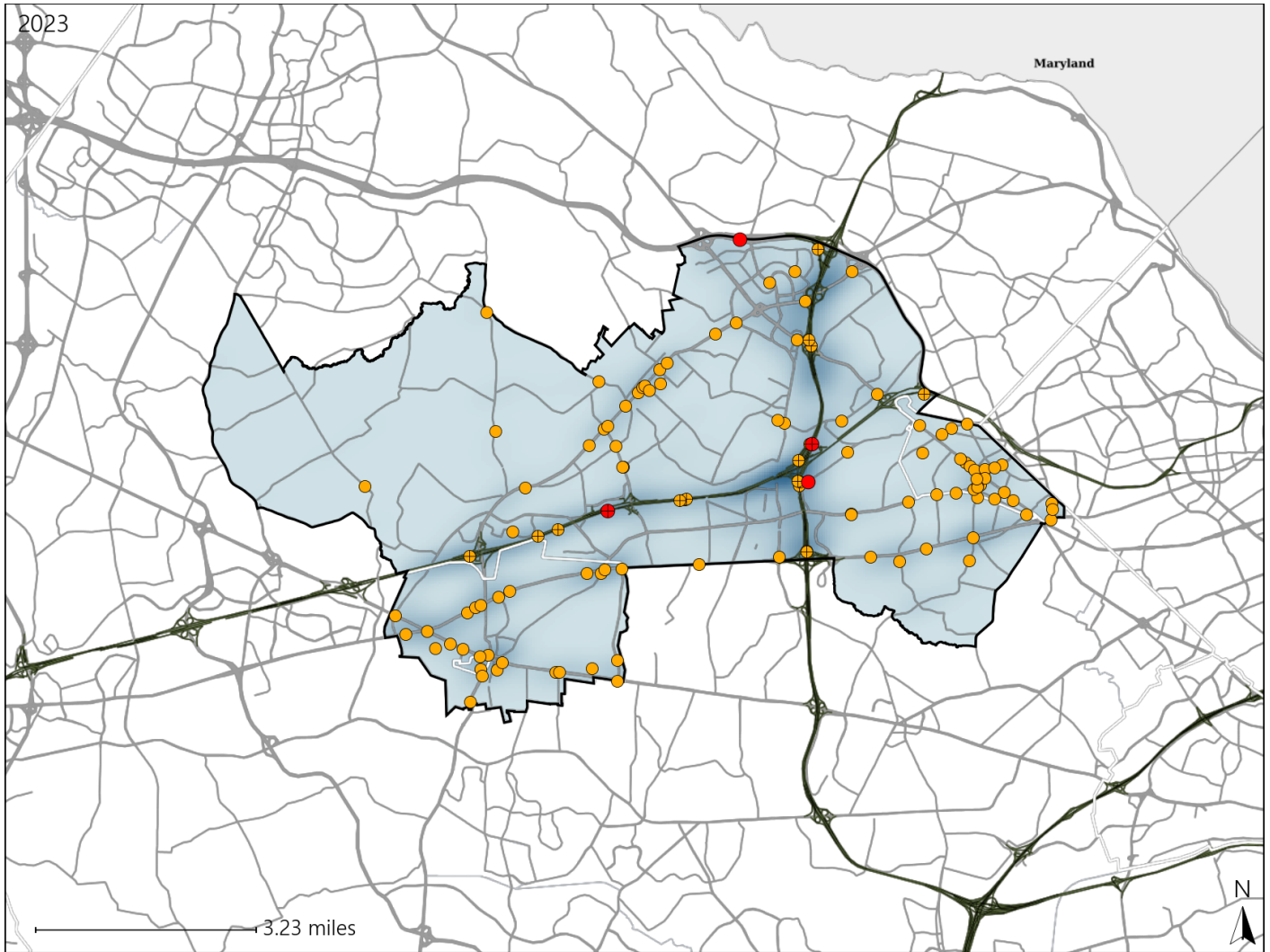


Virginia Senate District 37 Crash Statistics

Report Generated May, 2024

	Count	Highest Time Period(s)	Highest Day(s)	Highest Month(s)
Fatal Crashes	4	3:00am - 5:59am	Friday • Monday	August • February
Resulting Fatalities	4	(75%)	(50%)	(50%)
Serious Injury Crashes	116	3:00pm - 5:59pm	Tuesday	October
		(22%)	(21%)	(13%)



Senate District 37 Crashes

Interstate Crashes

- Fatal
- Serious Injury

Non-interstate Crashes

- Fatal
- Serious Injury

The blue gradient represents the density of all crashes.

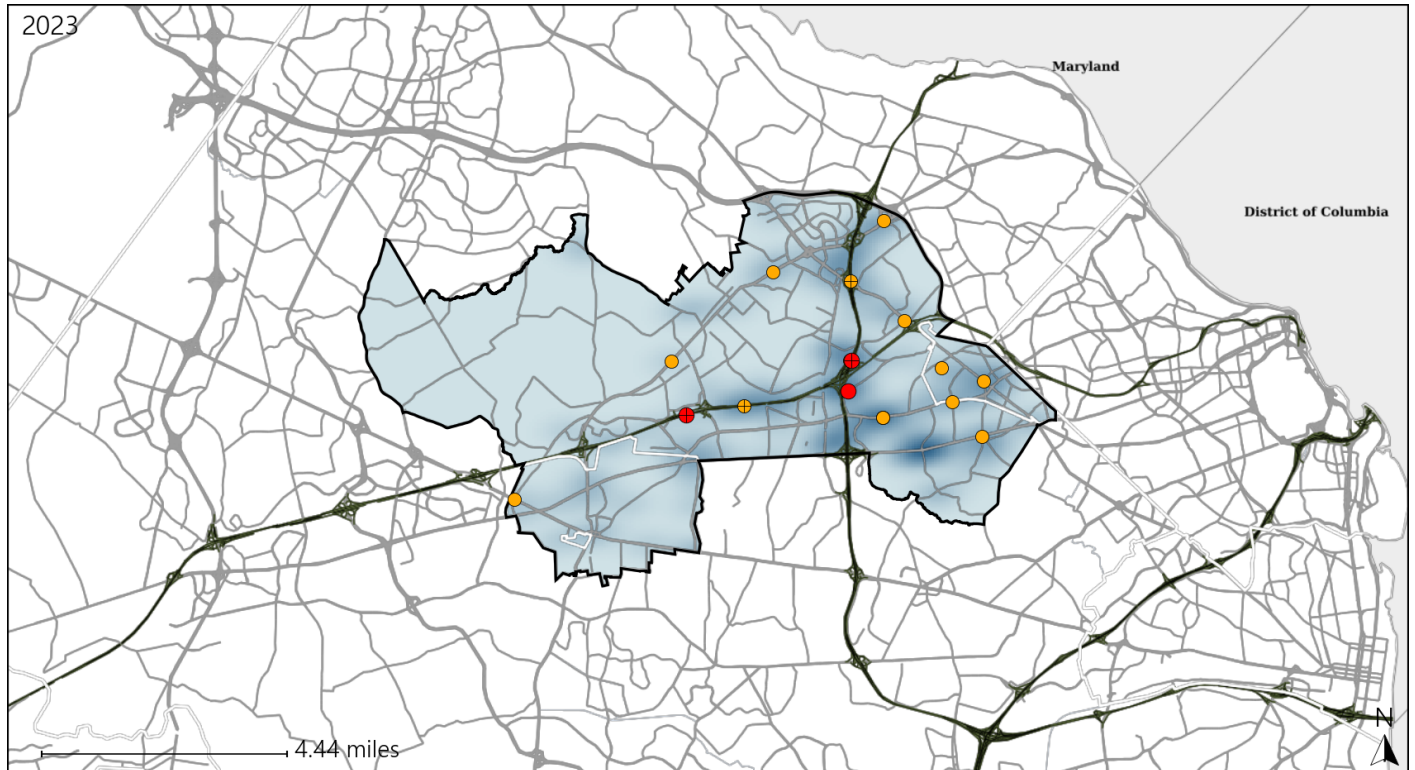


Available Crash Data - Calendar Year (CY)	CY 2020	CY 2021	CY 2022	CY 2023
Total Crashes	2012	2448	2763	3036
Fatal Crashes	1	8	12	4
Injury Crashes	532	639	701	834

Virginia Senate District 37 Alcohol Crash Statistics

Report Generated May, 2024

	Count	Highest Time Period(s)	Highest Day(s)	Highest Month(s)
Fatal Crashes	3	3:00am - 5:59am	Friday • Monday	August • February
Resulting Fatalities	3	(67%)	(66%)	(66%)
Serious Injury Crashes	14	Midnight - 2:59am	Saturday • Sunday	November • October
		(36%)	(58%)	(42%)



Senate District 37 Alcohol-Related Crashes

Interstate Crashes Non-interstate Crashes
 ● Fatal ● Fatal
 ⊕ Serious Injury ⊕ Serious Injury

The blue gradient represents the density of all alcohol-related crashes.

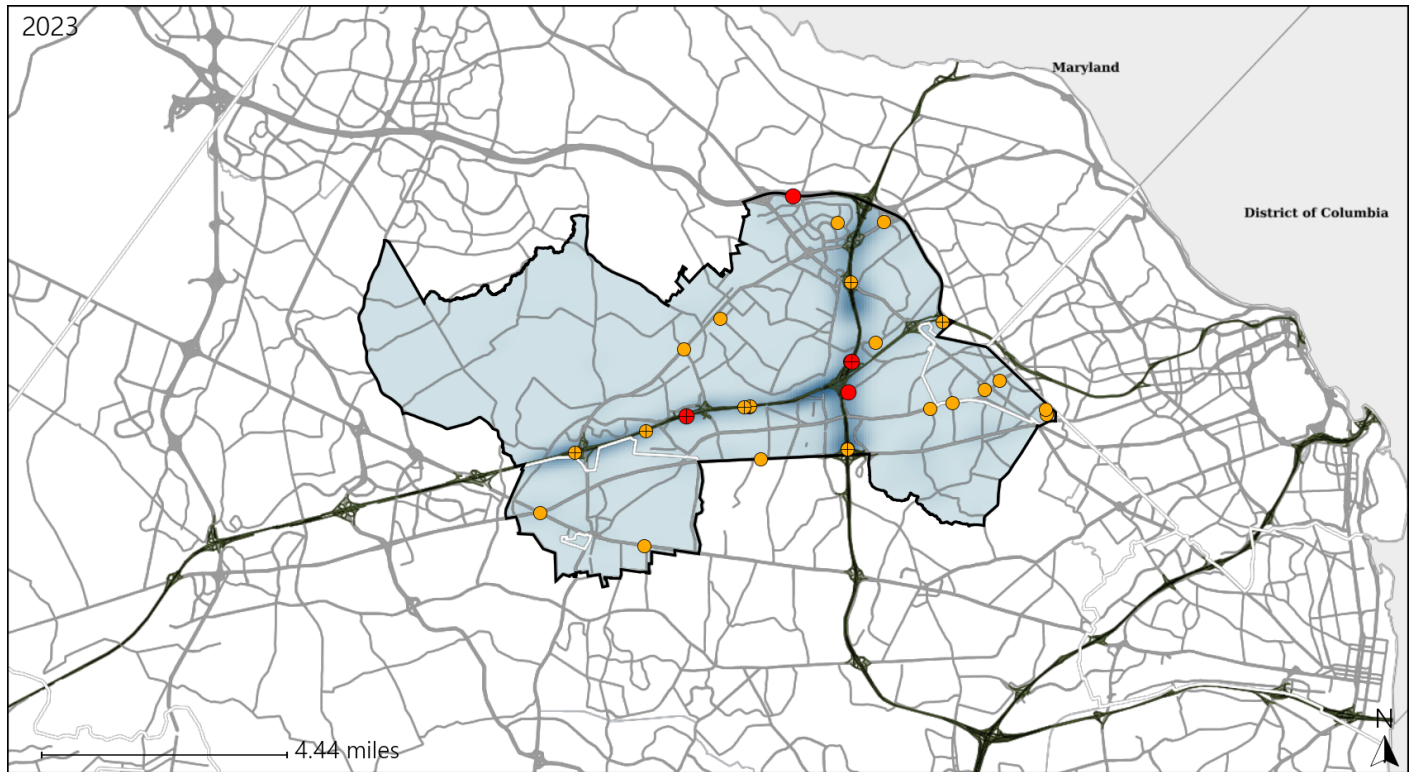


Available Crash Data - Calendar Year (CY)	CY 2020	CY 2021	CY 2022	CY 2023
Total Crashes	2012	2448	2763	3036
Fatal Crashes	1	8	12	4
Injury Crashes	532	639	701	834
Alcohol-Related Fatal Crashes	0	1	4	3
Percent of Alcohol-Related Fatal Crashes to Total Fatal Crashes	0%	13%	33%	75%
Alcohol-Related Injury Crashes	39	36	59	57
Percent of Alcohol-Related Injury Crashes to Total Injury Crashes	7%	6%	8%	7%

Virginia Senate District 37 Speed Crash Statistics

Report Generated May, 2024

	Count	Highest Time Period(s)	Highest Day(s)	Highest Month(s)
Fatal Crashes	4	3:00am - 5:59am	Friday • Monday	August • February
Resulting Fatalities	4	(75%)	(50%)	(50%)
Serious Injury Crashes	24	6:00pm - 8:59pm 9:00pm - 11:59pm	Monday	March • October
		(50%)	(25%)	(34%)



Senate District 37 Speed-Related Crashes

Interstate Crashes Non-interstate Crashes
 ● Fatal ● Fatal
 ⊕ Serious Injury ⊕ Serious Injury

The blue gradient represents the density of all speed-related crashes.

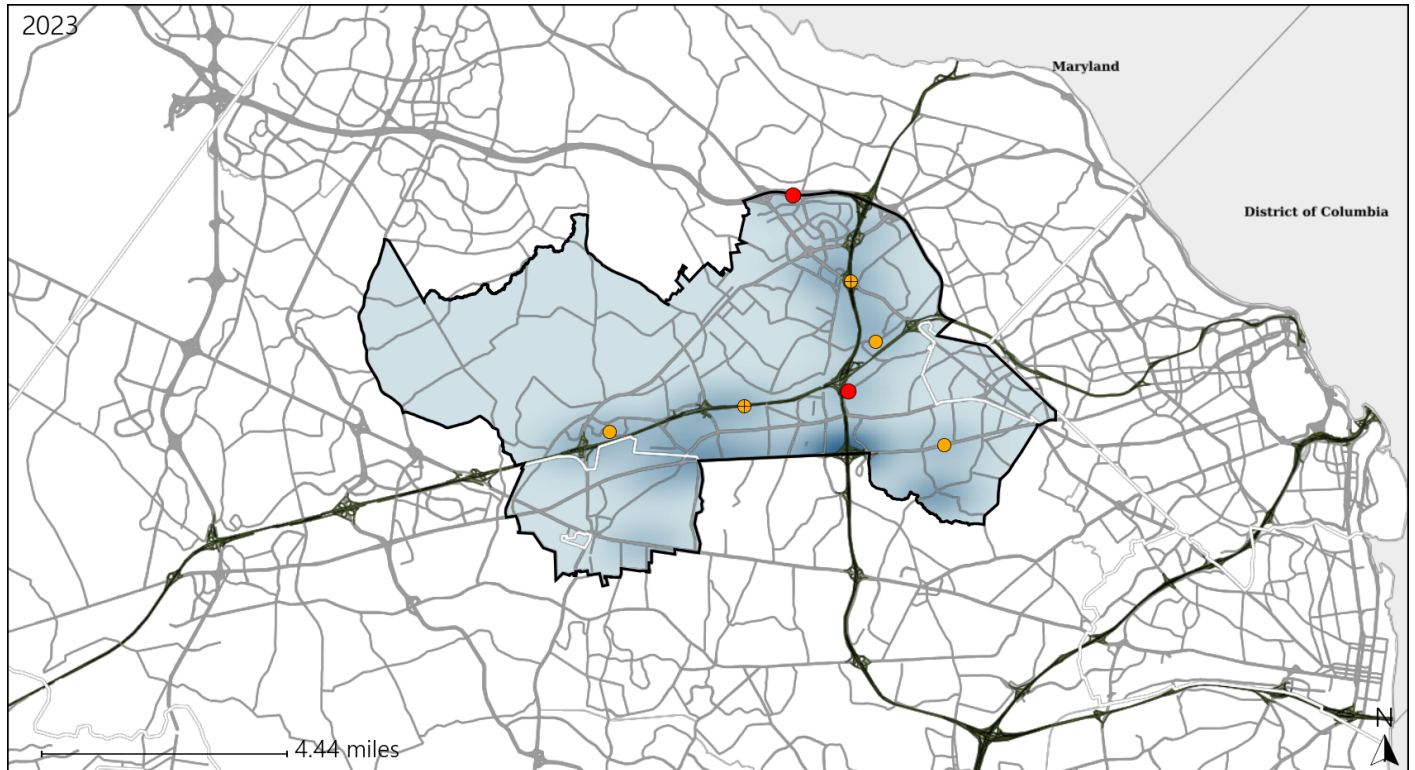


Available Crash Data - Calendar Year (CY)	CY 2020	CY 2021	CY 2022	CY 2023
Total Crashes	2012	2448	2763	3036
Fatal Crashes	1	8	12	4
Injury Crashes	532	639	701	834
Speed-Related Fatal Crashes	1	2	7	4
Percent of Speed-Related Fatal Crashes to Total Fatal Crashes	100%	25%	58%	100%
Speed-Related Injury Crashes	162	194	178	198
Percent of Speed-Related Injury Crashes to Total Injury Crashes	30%	30%	25%	24%

Virginia Senate District 37 Unrestrained Crash Statistics

Report Generated May, 2024

	Count	Highest Time Period(s)	Highest Day(s)	Highest Month(s)
Fatal Crashes	2	3:00am - 5:59am	Monday • Wednesday	November • October
Unrestrained Fatalities	2	(100%)	(100%)	(100%)
Serious Injury Crashes	5	Midnight - 2:59am	Monday • Sunday	January • July
		(60%)	(80%)	(40%)



Senate District 37 Unrestrained-Related Crashes

Interstate Crashes

Non-interstate Crashes

- Fatal
- Serious Injury

- Fatal
- Serious Injury

The blue gradient represents the density of all unrestrained-related crashes.

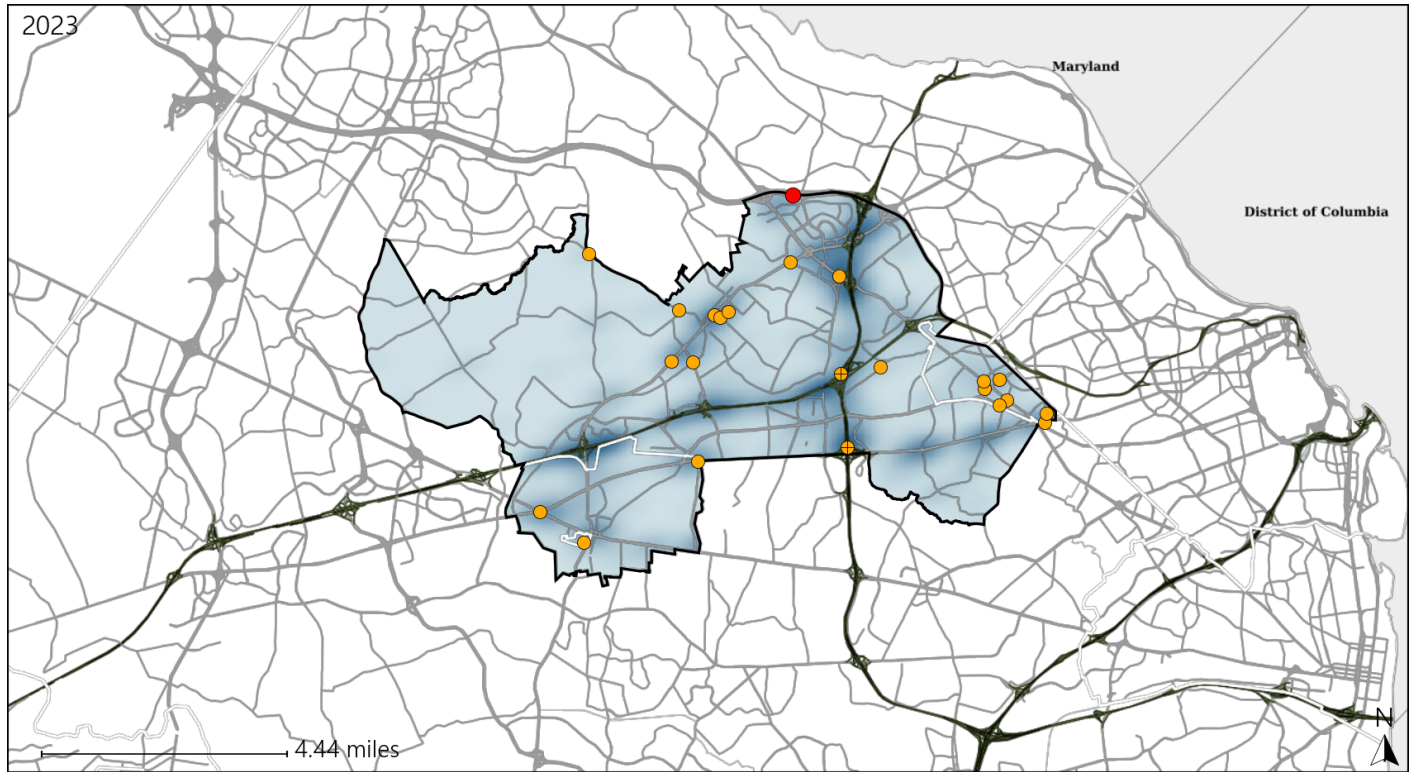


Available Crash Data - Calendar Year (CY)	CY 2020	CY 2021	CY 2022	CY 2023
Total Crashes	2012	2448	2763	3036
Fatalities	1	10	16	4
Injuries	785	986	1126	1338
Unrestrained Fatalities	0	1	9	2
Percent of Unrestrained Fatalities to Total Fatalities	0%	10%	56%	50%
Unrestrained Injuries	17	21	28	29
Percent of Unrestrained Injuries to Total Injuries	2%	2%	2%	2%

Virginia Senate District 37 Distracted Driving Crash Statistics

Report Generated May, 2024

	Count	Highest Time Period(s)	Highest Day(s)	Highest Month(s)
Fatal Crashes	1	3:00am - 5:59am	Wednesday	October
Resulting Fatalities	1	(100%)	(100%)	(100%)
Serious Injury Crashes	22	6:00pm - 8:59pm	Monday + Tuesday	October
		(27%)	(46%)	(18%)



Senate District 37 Distracted Driving-Related Crashes

- | | |
|--|--|
| Interstate Crashes | Non-interstate Crashes |
|  Fatal |  Fatal |
|  Serious Injury |  Serious Injury |

The blue gradient represents the density of all distracted driving-related crashes.



Available Crash Data - Calendar Year (CY)	CY 2020	CY 2021	CY 2022	CY 2023
Total Crashes	2012	2448	2763	3036
Fatal Crashes	1	8	12	4
Injury Crashes	532	639	701	834
Distracted Driving-Related Fatal Crashes	0	2	0	1
Percent of Distracted Driving-Related Fatal Crashes to Total Fatal Crashes	0%	25%	0%	25%
Distracted Driving-Related Injury Crashes	111	117	136	152
Percent of Distracted Driving-Related Injury Crashes to Total Injury Crashes	21%	18%	19%	18%