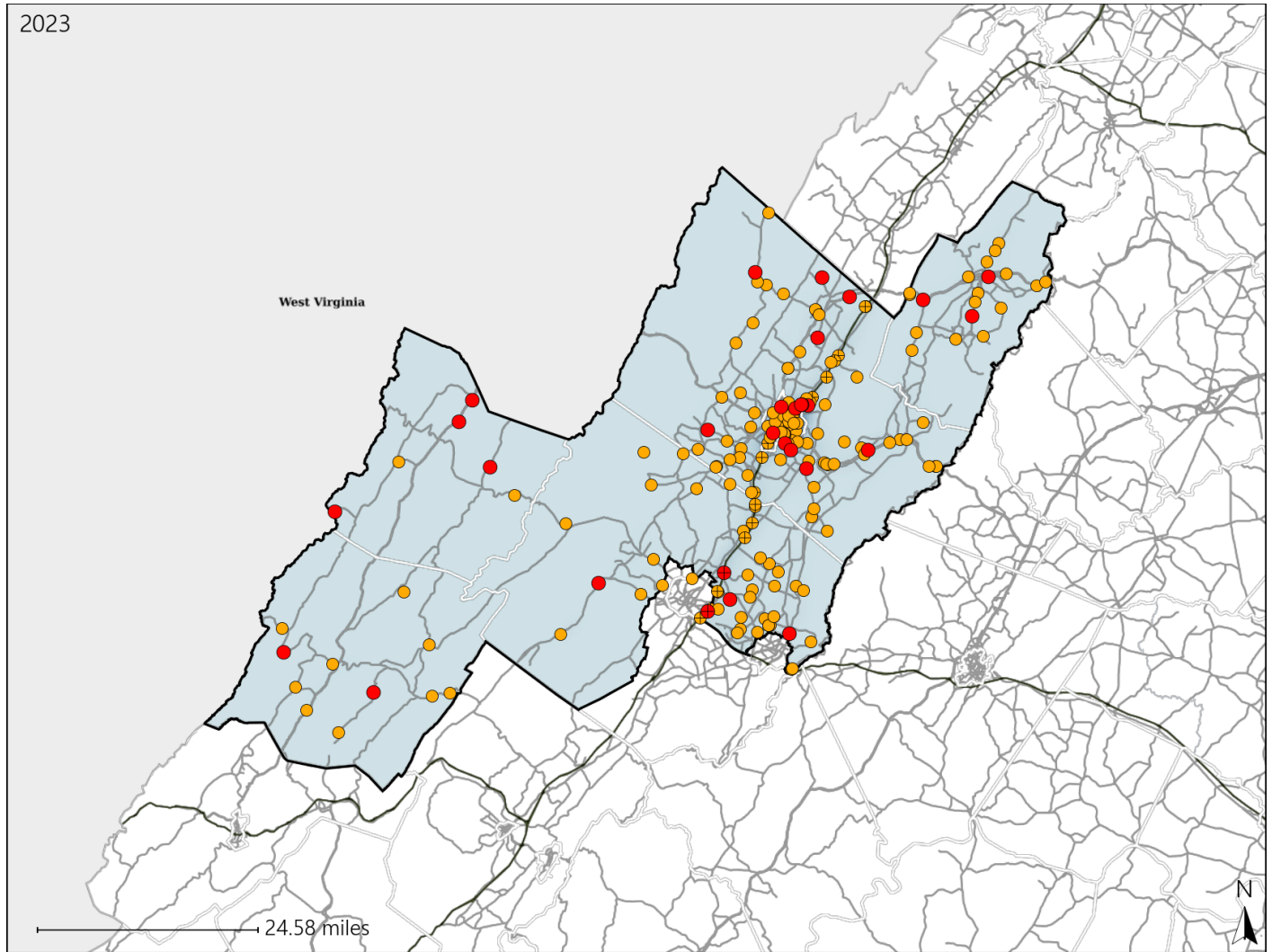


# Virginia Senate District 2 Crash Statistics

Report Generated May, 2024

	Count	Highest Time Period(s)	Highest Day(s)	Highest Month(s)
<b>Fatal Crashes</b>	<b>29</b>	<b>3:00pm - 5:59pm</b>	<b>Tuesday</b>	<b>April + March</b>
<b>Resulting Fatalities</b>	<b>31</b>	(28%)	(28%)	(28%)
<b>Serious Injury Crashes</b>	<b>166</b>	<b>3:00pm - 5:59pm</b>	<b>Saturday</b>	<b>May</b>
		(23%)	(22%)	(13%)



### Senate District 2 Crashes

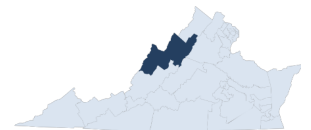
Interstate Crashes

- Fatal
- Serious Injury

Non-interstate Crashes

- Fatal
- Serious Injury

The blue gradient represents the density of all crashes.

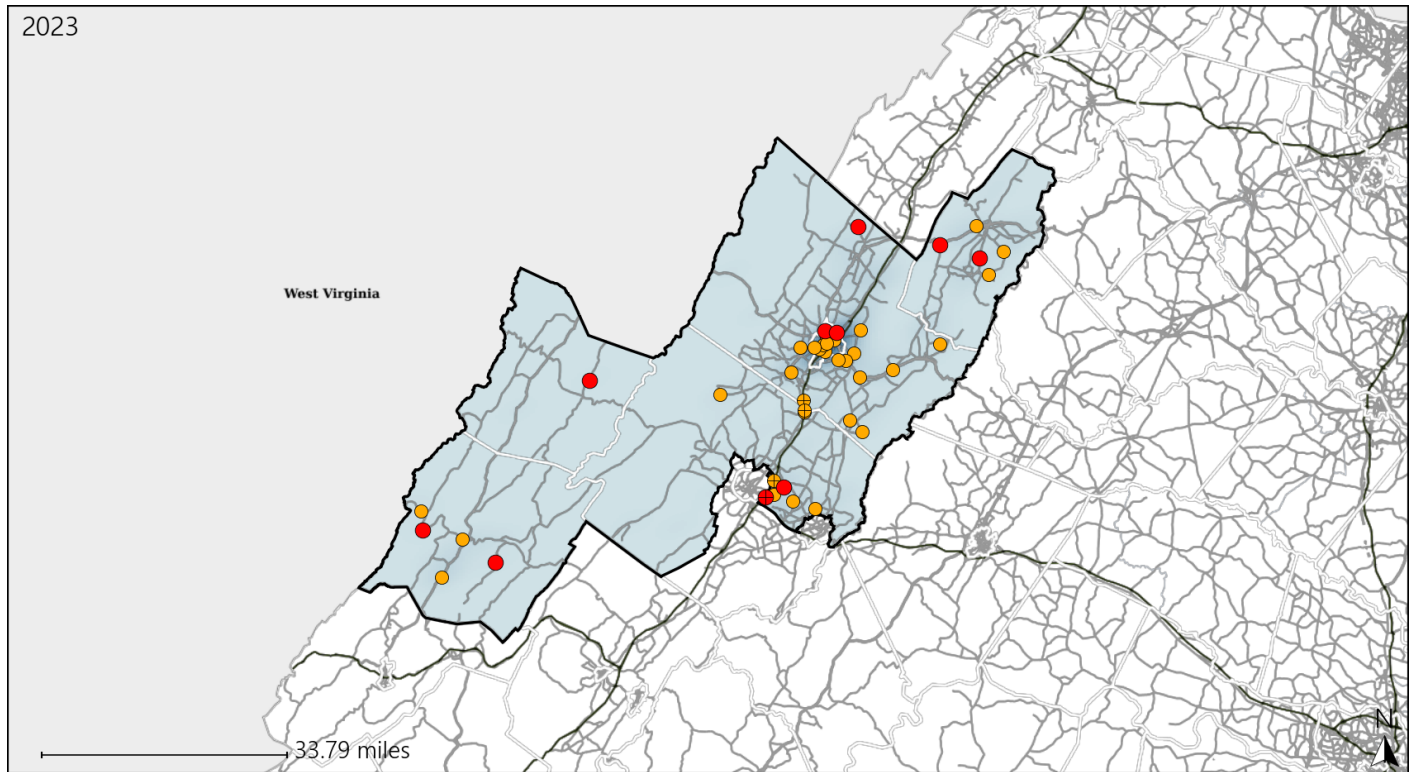


Available Crash Data - Calendar Year (CY)	CY 2020	CY 2021	CY 2022	CY 2023
Total Crashes	2632	3142	3360	3515
Fatal Crashes	27	27	46	29
Injury Crashes	729	822	888	928

# Virginia Senate District 2 Alcohol Crash Statistics

Report Generated May, 2024

	Count	Highest Time Period(s)	Highest Day(s)	Highest Month(s)
<b>Fatal Crashes</b>	<b>10</b>	<b>Midnight - 2:59am</b>	<b>Saturday</b>	<b>January • May</b>
<b>Resulting Fatalities</b>	<b>11</b>	(30%)	(50%)	(40%)
<b>Serious Injury Crashes</b>	<b>32</b>	<b>6:00pm - 8:59pm</b> <b>9:00pm - 11:59pm</b>	<b>Saturday</b>	<b>October</b>
		(50%)	(28%)	(16%)



## Senate District 2 Alcohol-Related Crashes

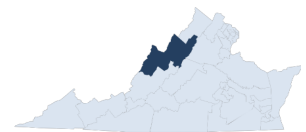
Interstate Crashes

- Fatal
- Serious Injury

Non-interstate Crashes

- Fatal
- Serious Injury

The blue gradient represents the density of all alcohol-related crashes.

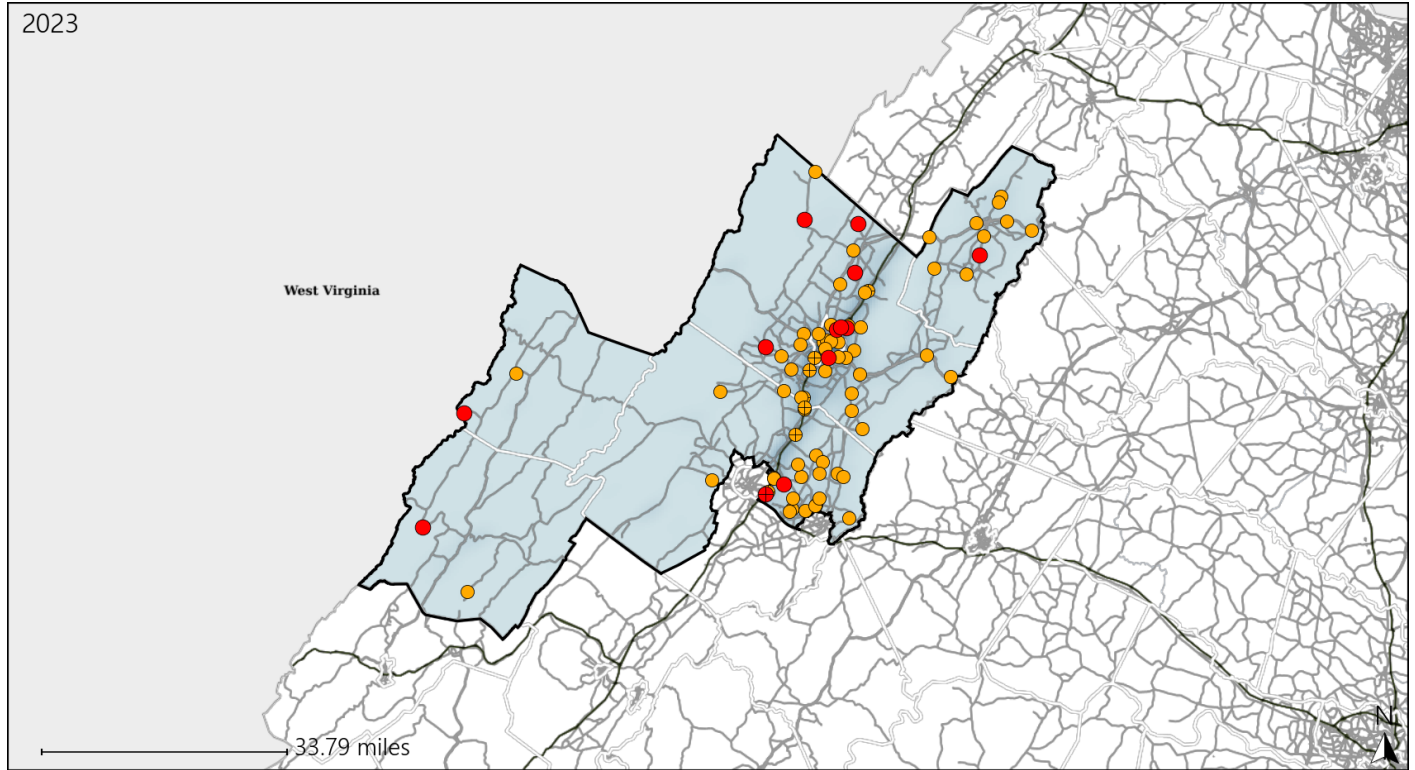


Available Crash Data - Calendar Year (CY)	CY 2020	CY 2021	CY 2022	CY 2023
Total Crashes	2632	3142	3360	3515
Fatal Crashes	27	27	46	29
Injury Crashes	729	822	888	928
Alcohol-Related Fatal Crashes	12	9	11	10
Percent of Alcohol-Related Fatal Crashes to Total Fatal Crashes	44%	33%	24%	34%
Alcohol-Related Injury Crashes	76	78	81	82
Percent of Alcohol-Related Injury Crashes to Total Injury Crashes	10%	9%	9%	9%

# Virginia Senate District 2 Speed Crash Statistics

Report Generated May, 2024

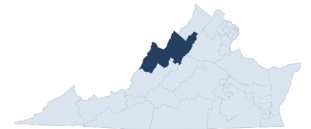
	Count	Highest Time Period(s)	Highest Day(s)	Highest Month(s)
<b>Fatal Crashes</b>	<b>13</b>	<b>Noon - 2:59pm</b>	<b>Monday • Saturday</b>	<b>April</b>
<b>Resulting Fatalities</b>	<b>14</b>	(23%)	(62%)	(23%)
<b>Serious Injury Crashes</b>	<b>67</b>	<b>3:00pm - 5:59pm</b>	<b>Friday • Saturday</b>	<b>August • July</b>
		(21%)	(42%)	(24%)



## Senate District 2 Speed-Related Crashes

Interstate Crashes                      Non-interstate Crashes  
 ● Fatal                                      ● Fatal  
 ⊕ Serious Injury                          ⊕ Serious Injury

The blue gradient represents the density of all speed-related crashes.

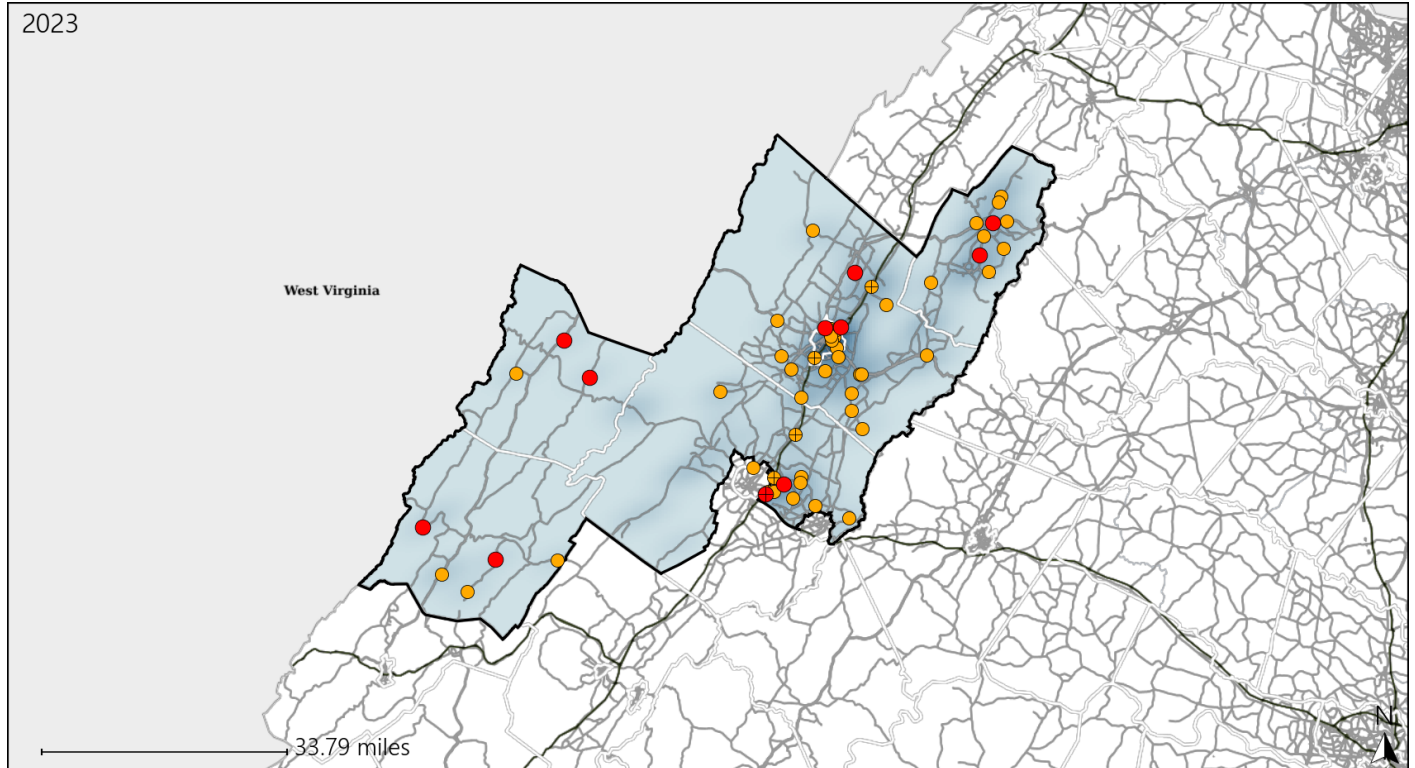


Available Crash Data - Calendar Year (CY)	CY 2020	CY 2021	CY 2022	CY 2023
Total Crashes	2632	3142	3360	3515
Fatal Crashes	27	27	46	29
Injury Crashes	729	822	888	928
Speed-Related Fatal Crashes	12	15	17	13
Percent of Speed-Related Fatal Crashes to Total Fatal Crashes	44%	56%	37%	45%
Speed-Related Injury Crashes	207	213	243	260
Percent of Speed-Related Injury Crashes to Total Injury Crashes	28%	26%	27%	28%

# Virginia Senate District 2 Unrestrained Crash Statistics

Report Generated May, 2024

	Count	Highest Time Period(s)	Highest Day(s)	Highest Month(s)
<b>Fatal Crashes</b>	<b>11</b>	<b>Noon - 2:59pm</b>	<b>Saturday</b>	<b>January</b>
<b>Unrestrained Fatalities</b>	<b>11</b>	(27%)	(36%)	(27%)
<b>Serious Injury Crashes</b>	<b>45</b>	<b>3:00pm - 5:59pm</b>	<b>Friday</b>	<b>August - May</b>
		(20%)	(20%)	(32%)



## Senate District 2 Unrestrained-Related Crashes

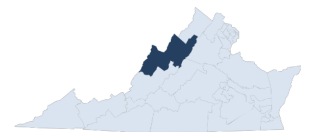
Interstate Crashes

Non-interstate Crashes

- Fatal
- Serious Injury

- Fatal
- Serious Injury

The blue gradient represents the density of all unrestrained-related crashes.



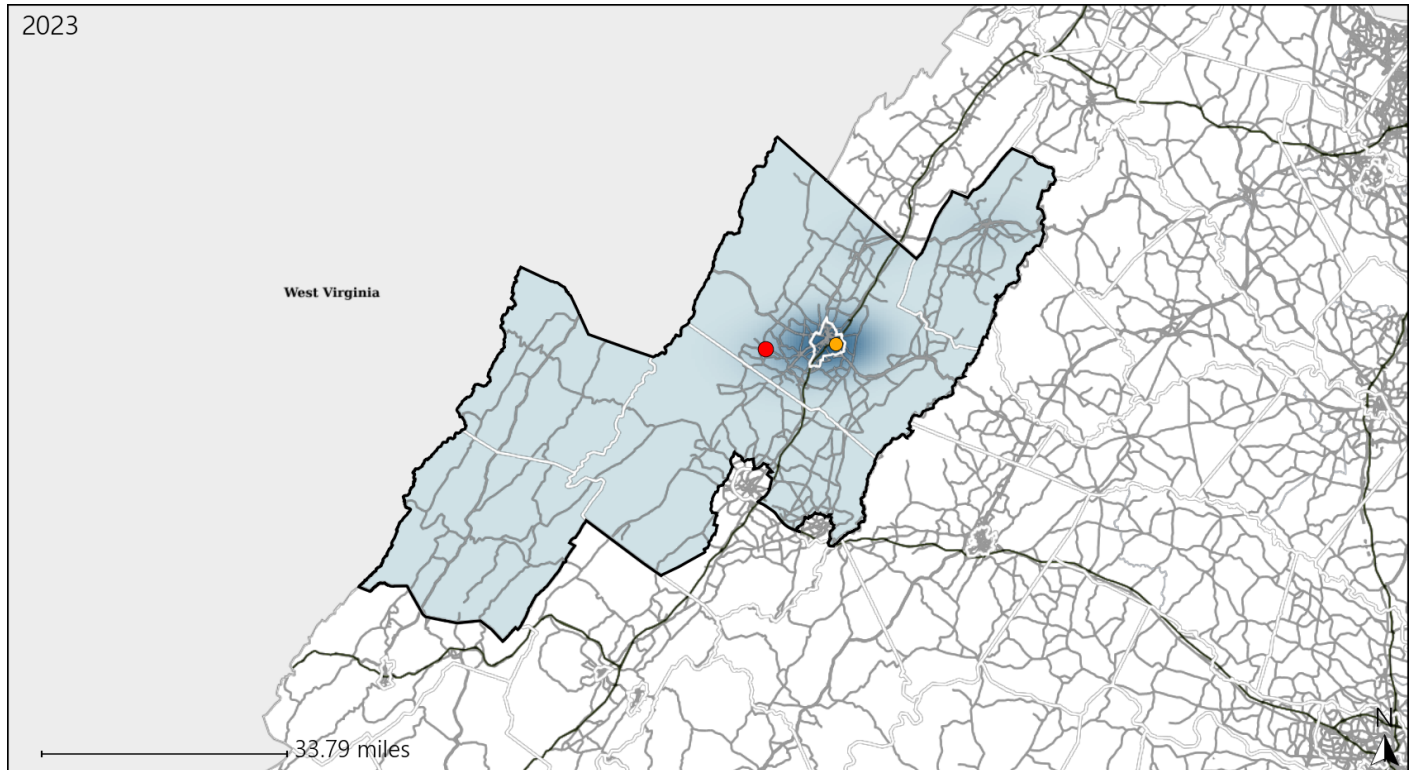
Available Crash Data - Calendar Year (CY)	CY 2020	CY 2021	CY 2022	CY 2023
<b>Total Crashes</b>	<b>2632</b>	<b>3142</b>	<b>3360</b>	<b>3515</b>
<b>Fatalities</b>	<b>30</b>	<b>28</b>	<b>47</b>	<b>31</b>
<b>Injuries</b>	<b>1086</b>	<b>1128</b>	<b>1208</b>	<b>1325</b>
<b>Unrestrained Fatalities</b>	<b>15</b>	<b>9</b>	<b>19</b>	<b>11</b>
<b>Percent of Unrestrained Fatalities to Total Fatalities</b>	<b>50%</b>	<b>32%</b>	<b>40%</b>	<b>35%</b>
<b>Unrestrained Injuries</b>	<b>126</b>	<b>130</b>	<b>150</b>	<b>137</b>
<b>Percent of Unrestrained Injuries to Total Injuries</b>	<b>12%</b>	<b>12%</b>	<b>12%</b>	<b>10%</b>



# Virginia Senate District 2 Bicycle Crash Statistics

Report Generated May, 2024

	Count	Highest Time Period(s)	Highest Day(s)	Highest Month(s)
<b>Fatal Crashes</b>	<b>1</b>	<b>6:00am - 8:59am</b>	<b>Tuesday</b>	<b>April</b>
<b>Bicycle Fatalities</b>	<b>1</b>	<b>(100%)</b>	<b>(100%)</b>	<b>(100%)</b>
<b>Serious Injury Crashes</b>	<b>1</b>	<b>9:00pm - 11:59pm</b>	<b>Saturday</b>	<b>June</b>
		<b>(100%)</b>	<b>(100%)</b>	<b>(100%)</b>



## Senate District 2 Bicycle-Related Crashes

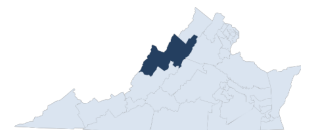
Interstate Crashes

Non-interstate Crashes

- Fatal
- Serious Injury

- Fatal
- Serious Injury

The blue gradient represents the density of all bicycle-related crashes.

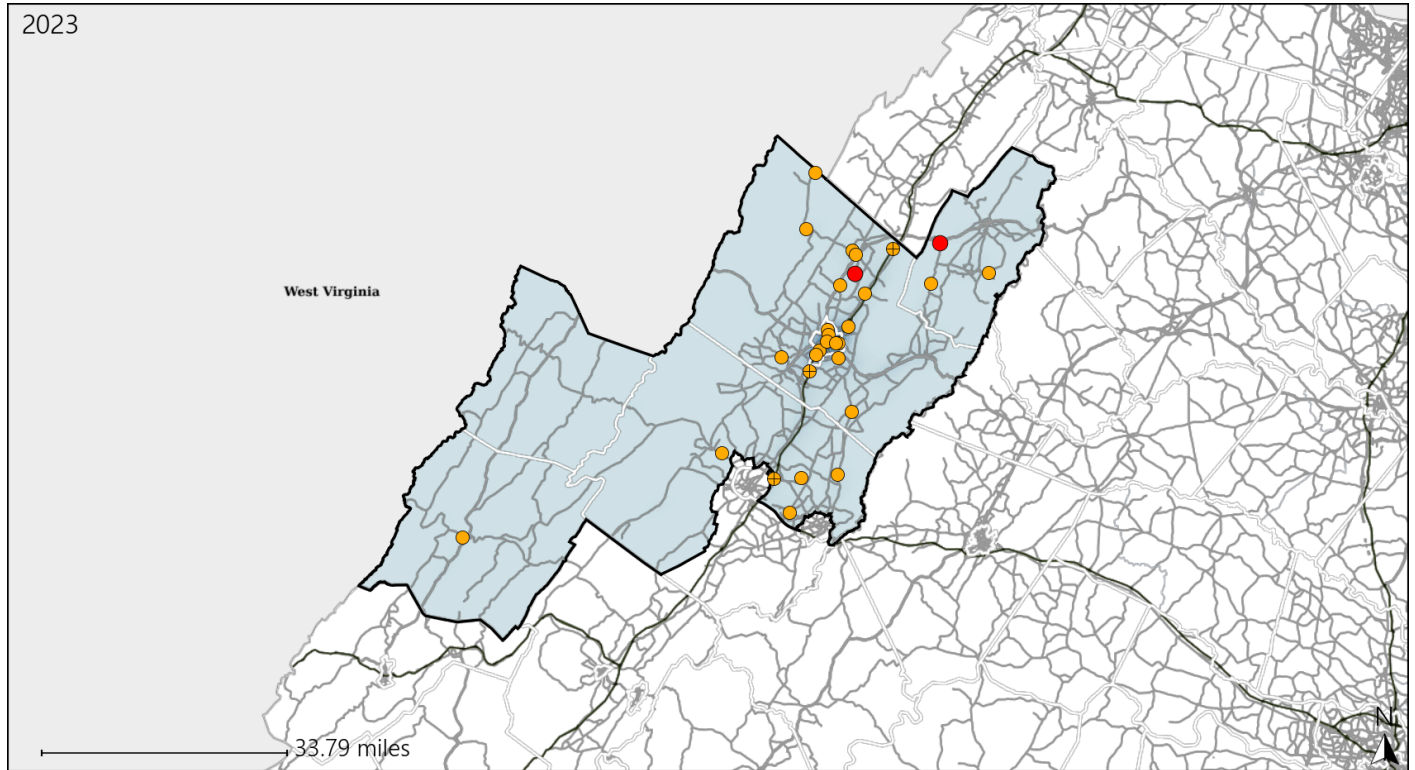


Available Crash Data - Calendar Year (CY)	CY 2020	CY 2021	CY 2022	CY 2023
Total Crashes	2632	3142	3360	3515
Fatal Crashes	27	27	46	29
Injury Crashes	729	822	888	928
Bicycle-Related Fatal Crashes	0	0	0	1
Percent of Bicycle-Related Fatal Crashes to Total Fatal Crashes	0%	0%	0%	3%
Bicycle-Related Injury Crashes	7	10	10	12
Percent of Bicycle-Related Injury Crashes to Total Injury Crashes	1%	1%	1%	1%

# Virginia Senate District 2 Distracted Driving Crash Statistics

Report Generated May, 2024

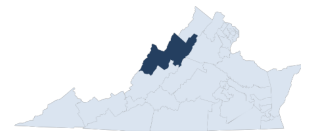
	Count	Highest Time Period(s)	Highest Day(s)	Highest Month(s)
<b>Fatal Crashes</b>	<b>2</b>	3:00pm - 5:59pm	Friday • Tuesday	August • December
<b>Resulting Fatalities</b>	<b>2</b>	9:00am - 11:59am (100%)	(100%)	(100%)
<b>Serious Injury Crashes</b>	<b>27</b>	6:00pm - 8:59pm (22%)	Saturday (22%)	July • November (30%)



## Senate District 2 Distracted Driving-Related Crashes

- |  |  |
|--|--|
| Interstate Crashes                                   | Non-interstate Crashes                               |
| <span style="color: red;">●</span> Fatal             | <span style="color: red;">●</span> Fatal             |
| <span style="color: orange;">●</span> Serious Injury | <span style="color: orange;">●</span> Serious Injury |

The blue gradient represents the density of all distracted driving-related crashes.



Available Crash Data - Calendar Year (CY)	CY 2020	CY 2021	CY 2022	CY 2023
Total Crashes	2632	3142	3360	3515
Fatal Crashes	27	27	46	29
Injury Crashes	729	822	888	928
Distracted Driving-Related Fatal Crashes	5	5	6	2
Percent of Distracted Driving-Related Fatal Crashes to Total Fatal Crashes	19%	19%	13%	7%
Distracted Driving-Related Injury Crashes	137	162	173	148
Percent of Distracted Driving-Related Injury Crashes to Total Injury Crashes	19%	20%	19%	16%