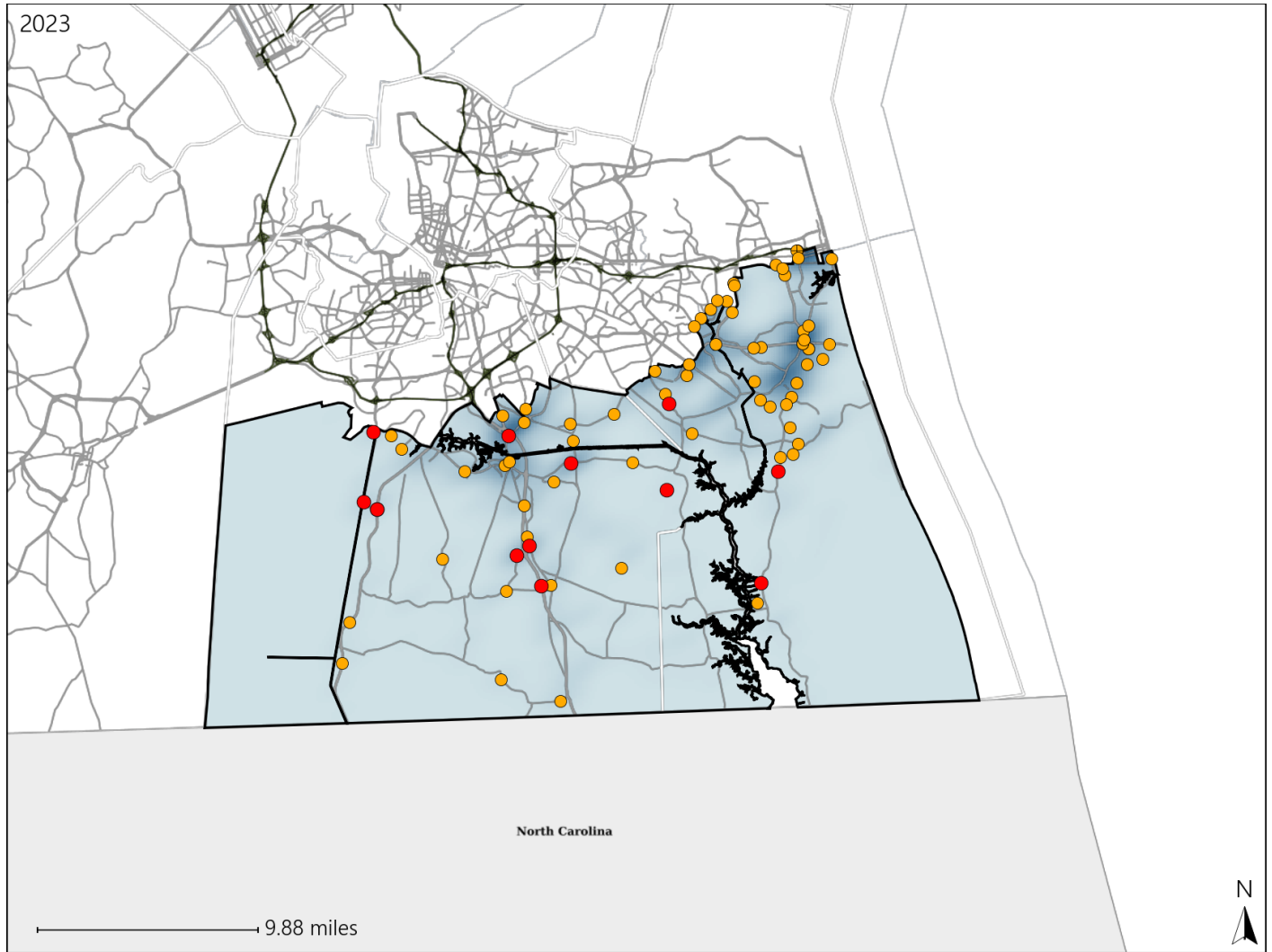


Virginia Senate District 19 Crash Statistics

Report Generated May, 2024

	Count	Highest Time Period(s)	Highest Day(s)	Highest Month(s)
Fatal Crashes	13	9:00pm - 11:59pm	Monday	October
Resulting Fatalities	13	(31%)	(23%)	(31%)
Serious Injury Crashes	68	3:00pm - 5:59pm	Friday	February
		(28%)	(28%)	(13%)



Senate District 19 Crashes

Interstate Crashes

- Fatal
- Serious Injury

Non-interstate Crashes

- Fatal
- Serious Injury

The blue gradient represents the density of all crashes.

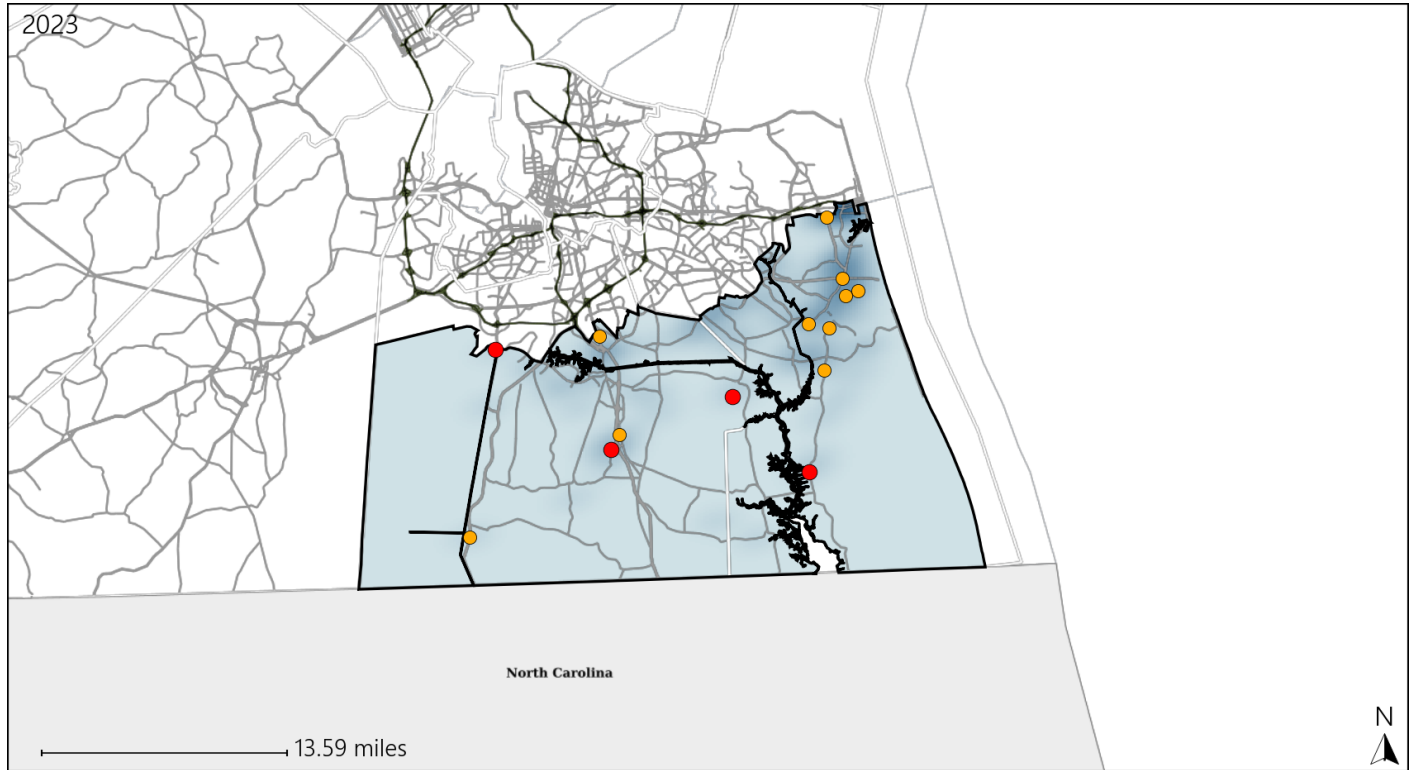


Available Crash Data - Calendar Year (CY)	CY 2020	CY 2021	CY 2022	CY 2023
Total Crashes	1458	1608	1773	1516
Fatal Crashes	10	16	16	13
Injury Crashes	478	525	590	512

Virginia Senate District 19 Alcohol Crash Statistics

Report Generated May, 2024

	Count	Highest Time Period(s)	Highest Day(s)	Highest Month(s)
Fatal Crashes	4	6:00pm - 8:59pm	Saturday • Sunday	April • December
Resulting Fatalities	4	9:00pm - 11:59pm (100%)	(50%)	(50%)
Serious Injury Crashes	10	9:00pm - 11:59pm (40%)	Friday (60%)	April (30%)



Senate District 19 Alcohol-Related Crashes

Interstate Crashes Non-interstate Crashes
 ● Fatal ● Fatal
 ● Serious Injury ● Serious Injury

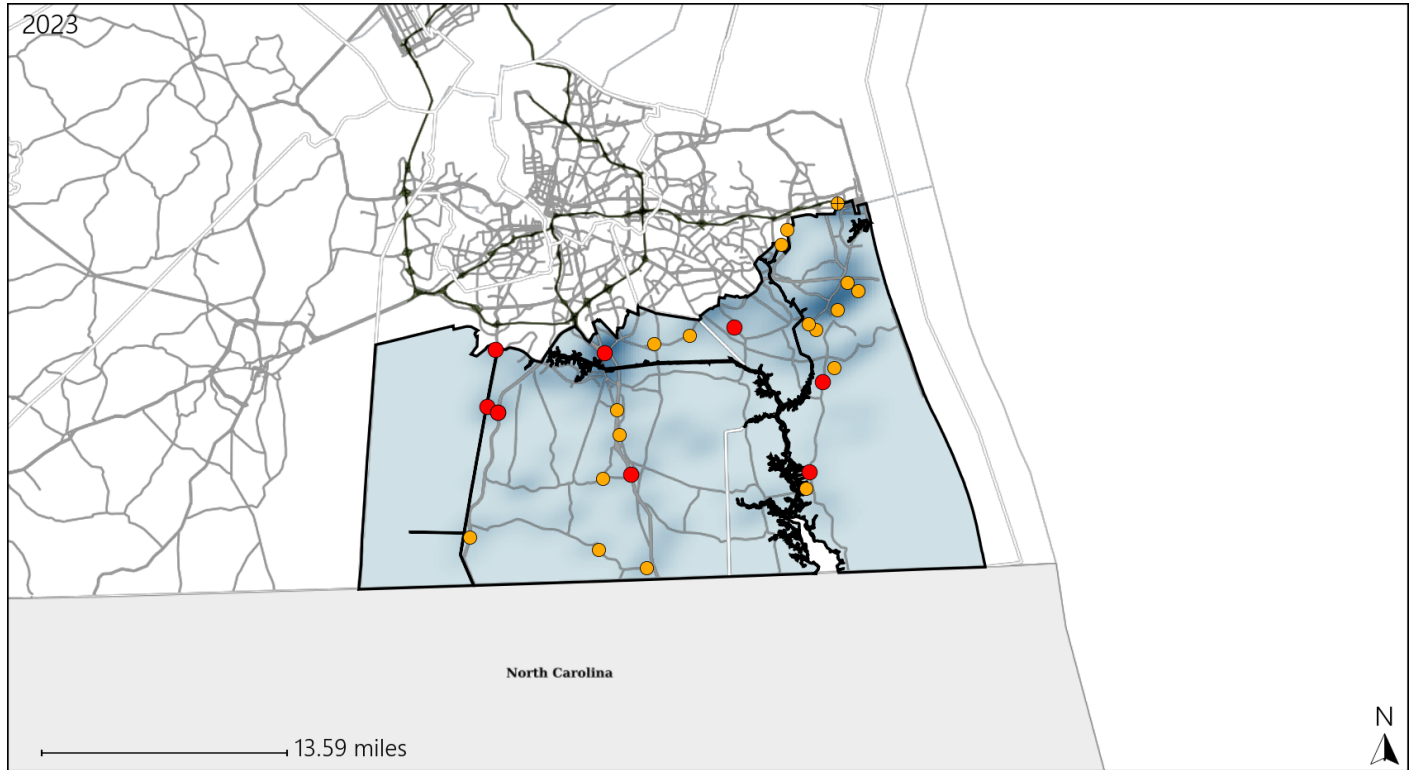
The blue gradient represents the density of all alcohol-related crashes.

Available Crash Data - Calendar Year (CY)	CY 2020	CY 2021	CY 2022	CY 2023
Total Crashes	1458	1608	1773	1516
Fatal Crashes	10	16	16	13
Injury Crashes	478	525	590	512
Alcohol-Related Fatal Crashes	5	8	4	4
Percent of Alcohol-Related Fatal Crashes to Total Fatal Crashes	50%	50%	25%	31%
Alcohol-Related Injury Crashes	52	54	45	39
Percent of Alcohol-Related Injury Crashes to Total Injury Crashes	11%	10%	8%	8%

Virginia Senate District 19 Speed Crash Statistics

Report Generated May, 2024

	Count	Highest Time Period(s)	Highest Day(s)	Highest Month(s)
Fatal Crashes	9	3:00am - 5:59am	Monday • Sunday	February • January
Resulting Fatalities	9	6:00pm - 8:59pm (44%)	(44%)	(44%)
Serious Injury Crashes	18	6:00pm - 8:59pm (33%)	Friday • Thursday (44%)	February (22%)



Senate District 19 Speed-Related Crashes

Interstate Crashes

- Fatal
- Serious Injury

Non-interstate Crashes

- Fatal
- Serious Injury

The blue gradient represents the density of all speed-related crashes.

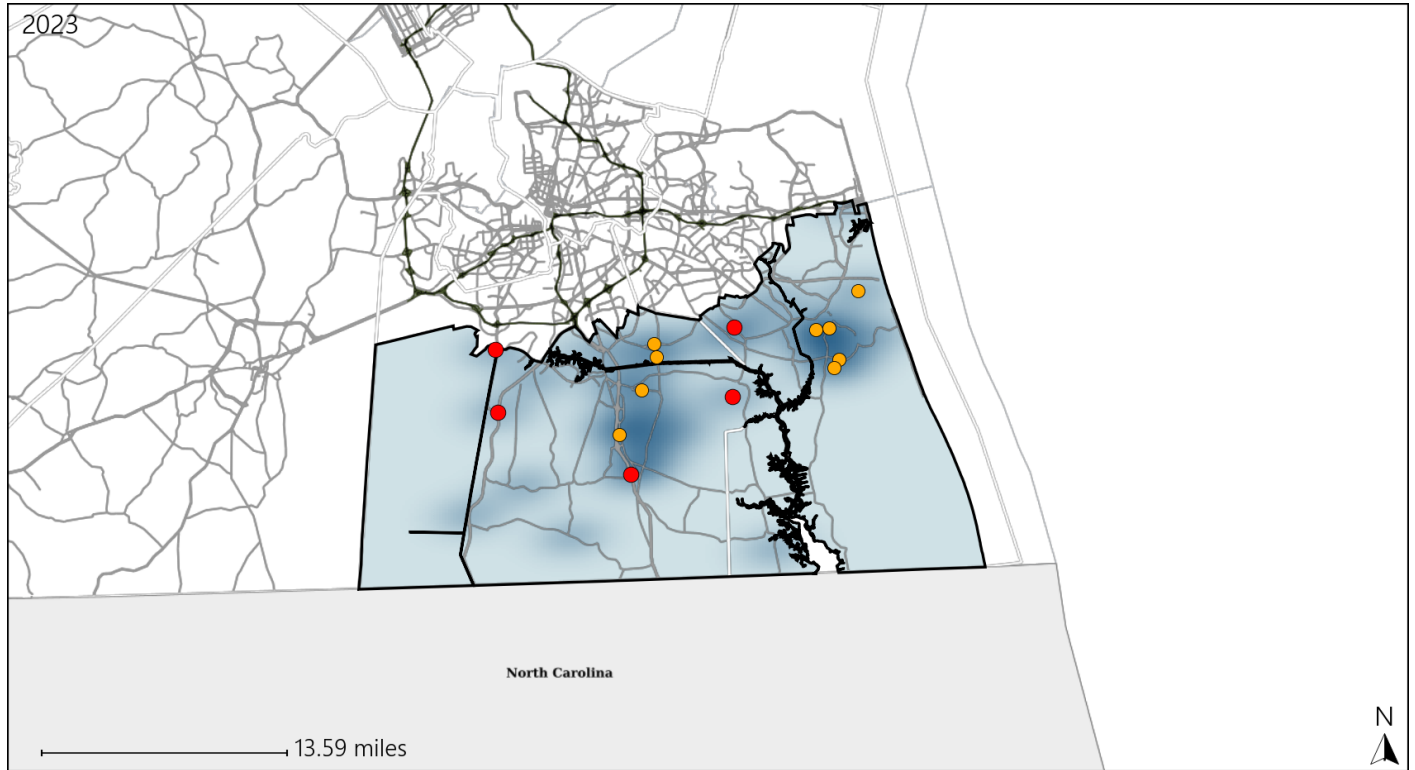


Available Crash Data - Calendar Year (CY)	CY 2020	CY 2021	CY 2022	CY 2023
Total Crashes	1458	1608	1773	1516
Fatal Crashes	10	16	16	13
Injury Crashes	478	525	590	512
Speed-Related Fatal Crashes	5	9	5	9
Percent of Speed-Related Fatal Crashes to Total Fatal Crashes	50%	56%	31%	69%
Speed-Related Injury Crashes	77	102	100	83
Percent of Speed-Related Injury Crashes to Total Injury Crashes	16%	19%	17%	16%

Virginia Senate District 19 Unrestrained Crash Statistics

Report Generated May, 2024

	Count	Highest Time Period(s)	Highest Day(s)	Highest Month(s)
Fatal Crashes	5	3:00am - 5:59am	Saturday	October
Unrestrained Fatalities	5	3:00pm - 5:59pm (40%)	(40%)	(40%)
Serious Injury Crashes	9	3:00pm - 5:59pm (33%)	Wednesday (33%)	February (33%)



Senate District 19 Unrestrained-Related Crashes

Interstate Crashes

Non-interstate Crashes

● Fatal

● Fatal

● Serious Injury

● Serious Injury

The blue gradient represents the density of all unrestrained-related crashes.

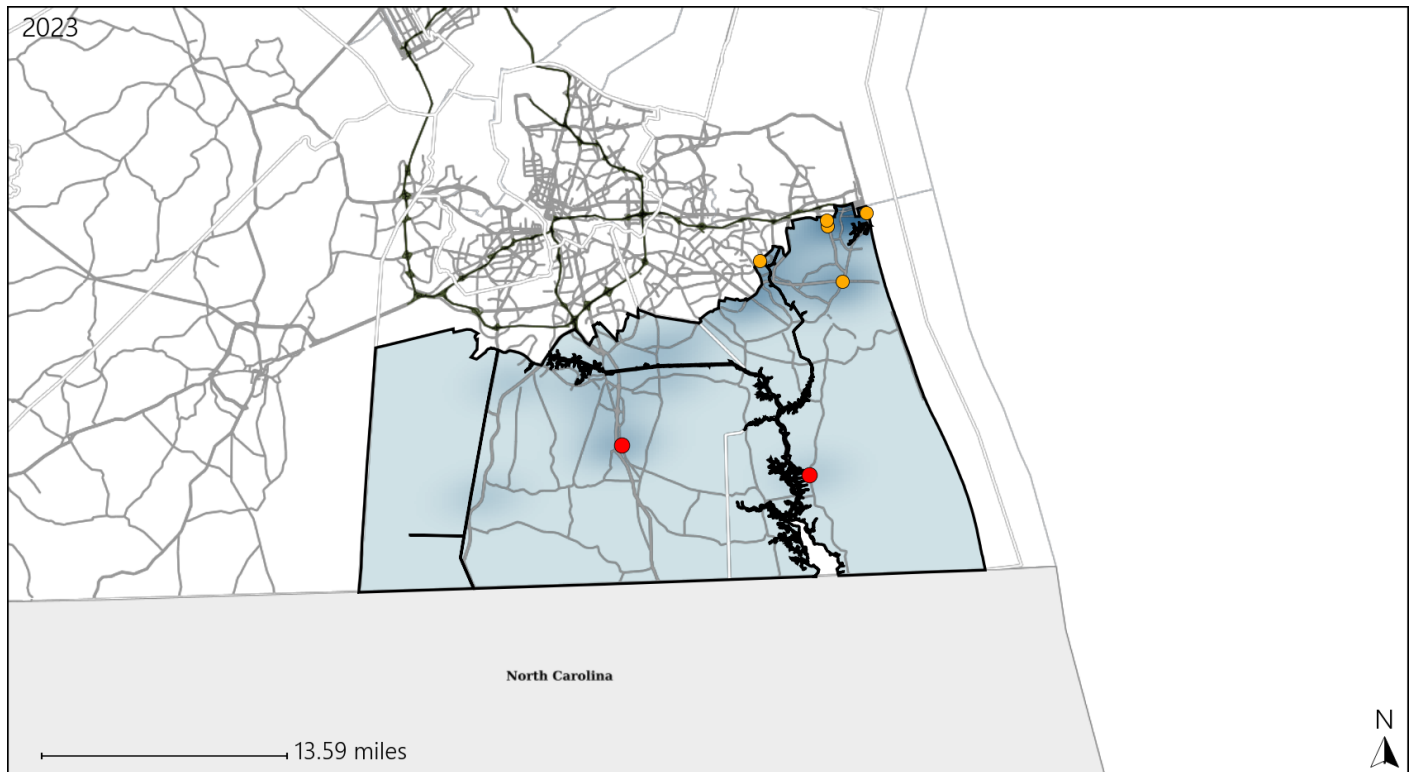


Available Crash Data - Calendar Year (CY)	CY 2020	CY 2021	CY 2022	CY 2023
Total Crashes	1458	1608	1773	1516
Fatalities	10	16	16	13
Injuries	732	832	949	792
Unrestrained Fatalities	0	2	6	5
Percent of Unrestrained Fatalities to Total Fatalities	0%	13%	38%	38%
Unrestrained Injuries	42	34	37	32
Percent of Unrestrained Injuries to Total Injuries	6%	4%	4%	4%

Virginia Senate District 19 Pedestrian Crash Statistics

Report Generated May, 2024

	Count	Highest Time Period(s)	Highest Day(s)	Highest Month(s)
Fatal Crashes	2	3:00pm - 5:59pm	Sunday • Tuesday	January • October
Pedestrian Fatalities	2	6:00pm - 8:59pm (100%)	(100%)	(100%)
Serious Injury Crashes	5	3:00pm - 5:59pm 6:00am - 8:59am (40%)	Friday • Saturday (80%)	April • August (40%)



Senate District 19 Pedestrian-Related Crashes

Interstate Crashes Non-interstate Crashes
 ● Fatal ● Fatal
 ⊕ Serious Injury ⊕ Serious Injury

The blue gradient represents the density of all pedestrian-related crashes.

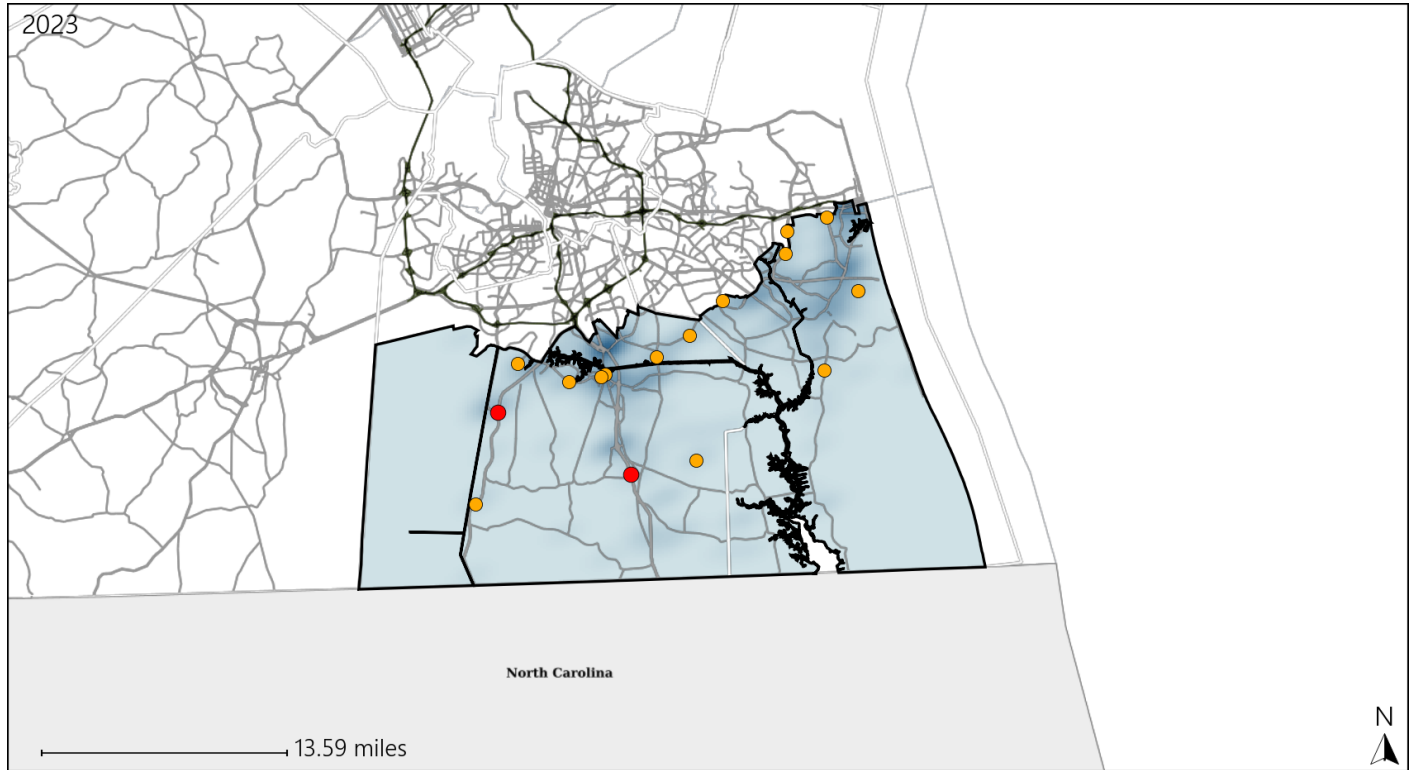


Available Crash Data - Calendar Year (CY)	CY 2020	CY 2021	CY 2022	CY 2023
Total Crashes	1458	1608	1773	1516
Fatal Crashes	10	16	16	13
Injury Crashes	478	525	590	512
Pedestrian-Related Fatal Crashes	0	3	1	2
Percent of Pedestrian-Related Fatal Crashes to Total Fatal Crashes	0%	19%	6%	15%
Pedestrian-Related Injury Crashes	15	15	17	24
Percent of Pedestrian-Related Injury Crashes to Total Injury Crashes	3%	3%	3%	5%

Virginia Senate District 19 Distracted Driving Crash Statistics

Report Generated May, 2024

	Count	Highest Time Period(s)	Highest Day(s)	Highest Month(s)
Fatal Crashes	2	3:00am - 5:59am	Friday - Thursday	January - September
Resulting Fatalities	2	9:00am - 11:59am (100%)	(100%)	(100%)
Serious Injury Crashes	14	3:00pm - 5:59pm (43%)	Wednesday (50%)	January (21%)



Senate District 19 Distracted Driving-Related Crashes

Interstate Crashes

- Fatal
- Serious Injury

Non-interstate Crashes

- Fatal
- Serious Injury

The blue gradient represents the density of all distracted driving-related crashes.



Available Crash Data - Calendar Year (CY)	CY 2020	CY 2021	CY 2022	CY 2023
Total Crashes	1458	1608	1773	1516
Fatal Crashes	10	16	16	13
Injury Crashes	478	525	590	512
Distracted Driving-Related Fatal Crashes	1	0	0	2
Percent of Distracted Driving-Related Fatal Crashes to Total Fatal Crashes	10%	0%	0%	15%
Distracted Driving-Related Injury Crashes	114	109	100	90
Percent of Distracted Driving-Related Injury Crashes to Total Injury Crashes	24%	21%	17%	18%