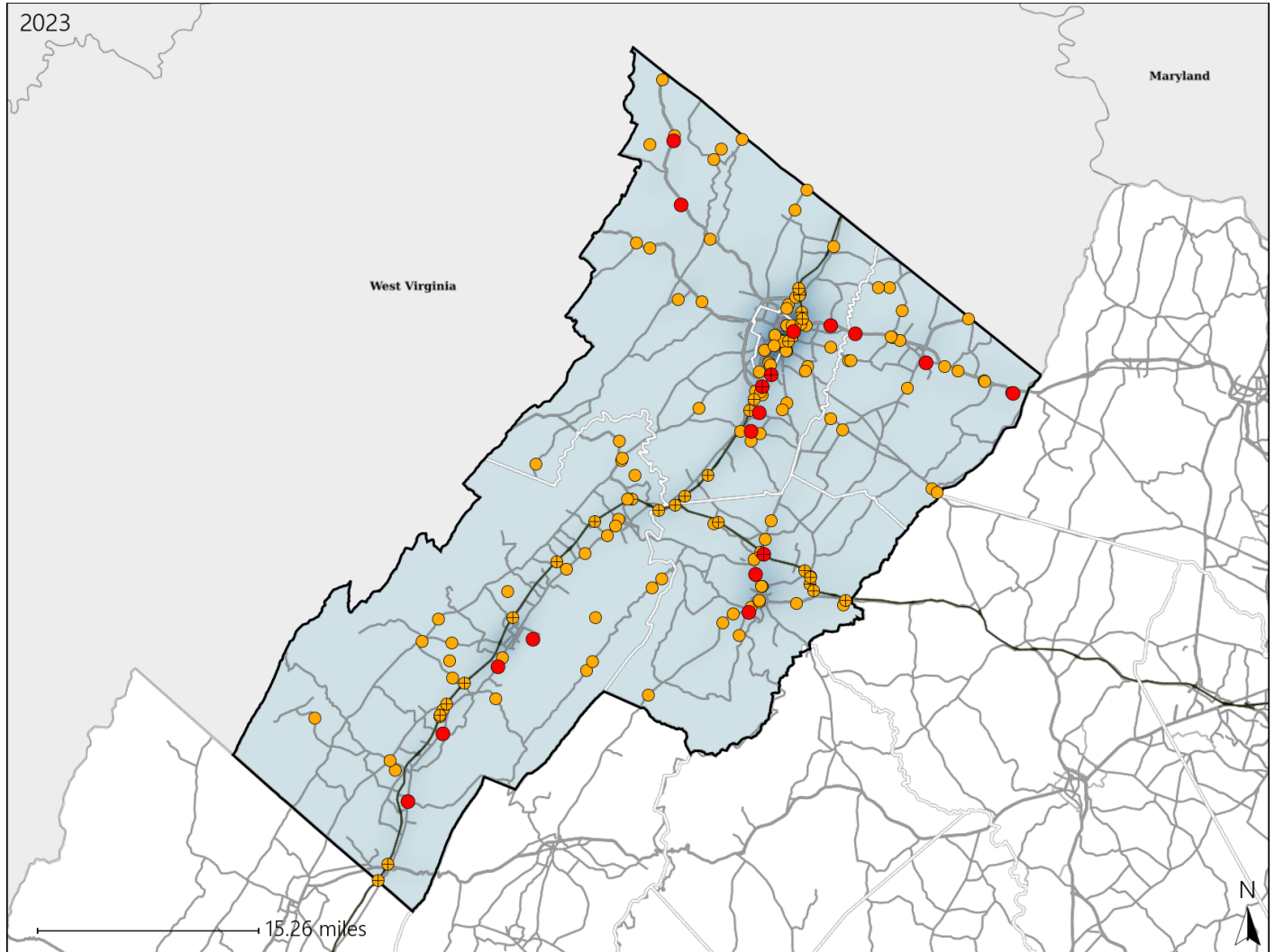


# Virginia Senate District 1 Crash Statistics

Report Generated May, 2024

	Count	Highest Time Period(s)	Highest Day(s)	Highest Month(s)
<b>Fatal Crashes</b>	<b>18</b>	3:00pm - 5:59pm	Sunday	January
<b>Resulting Fatalities</b>	<b>20</b>	6:00pm - 8:59pm (34%)	(33%)	(17%)
<b>Serious Injury Crashes</b>	<b>141</b>	3:00pm - 5:59pm (20%)	Saturday (20%)	September (13%)



### Senate District 1 Crashes

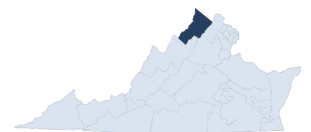
Interstate Crashes

- Fatal
- Serious Injury

Non-interstate Crashes

- Fatal
- Serious Injury

The blue gradient represents the density of all crashes.

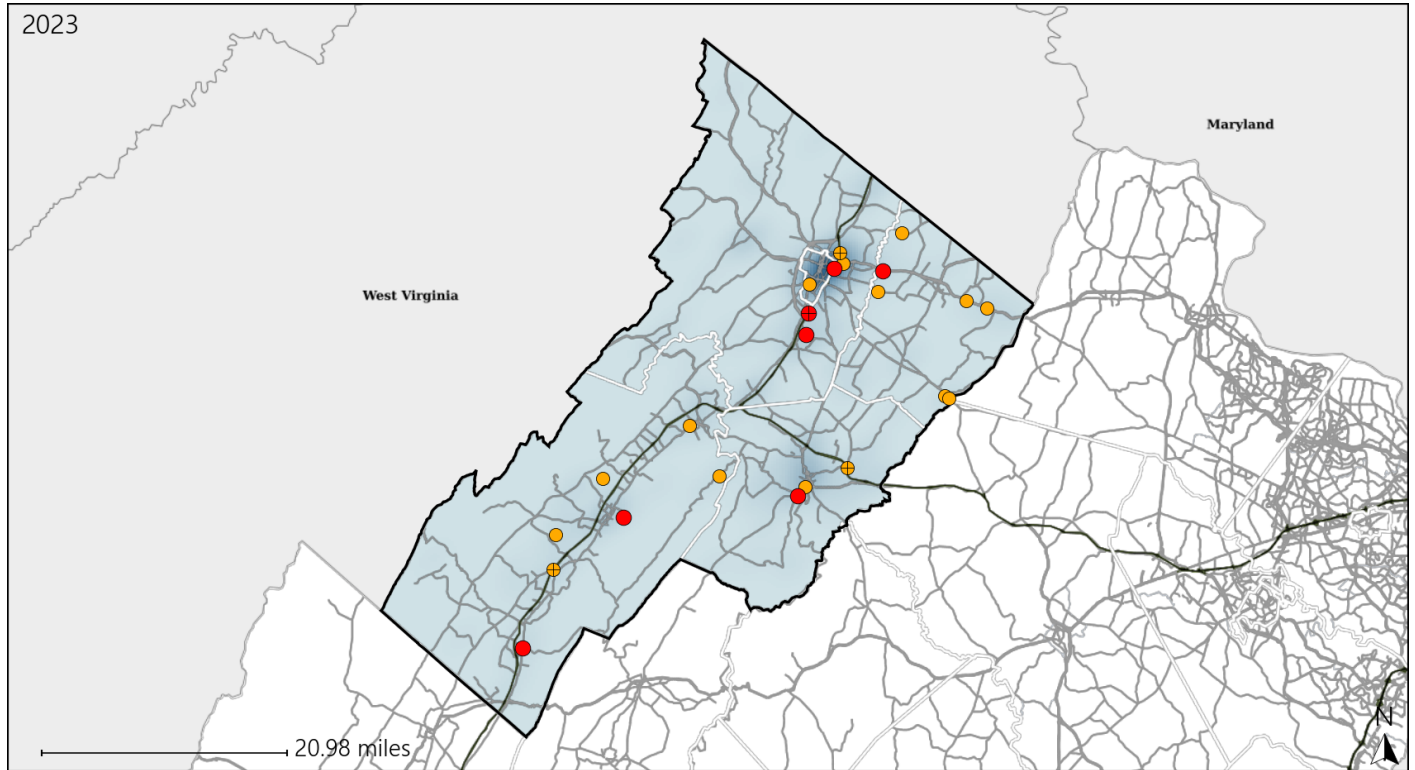


Available Crash Data - Calendar Year (CY)	CY 2020	CY 2021	CY 2022	CY 2023
Total Crashes	2821	3255	3419	3560
Fatal Crashes	26	22	29	18
Injury Crashes	707	849	759	863

# Virginia Senate District 1 Alcohol Crash Statistics

Report Generated May, 2024

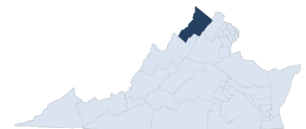
	Count	Highest Time Period(s)	Highest Day(s)	Highest Month(s)
<b>Fatal Crashes</b>	<b>7</b>	<b>9:00pm - 11:59pm</b>	<b>Sunday</b>	<b>March</b>
<b>Resulting Fatalities</b>	<b>9</b>	<b>Midnight - 2:59am</b> (58%)	<b>(57%)</b>	<b>(29%)</b>
<b>Serious Injury Crashes</b>	<b>16</b>	<b>9:00pm - 11:59pm</b> (31%)	<b>Thursday</b> (25%)	<b>December</b> (19%)



## Senate District 1 Alcohol-Related Crashes

Interstate Crashes                      Non-interstate Crashes  
 ● Fatal                                      ● Fatal  
 ● Serious Injury                          ● Serious Injury

The blue gradient represents the density of all alcohol-related crashes.

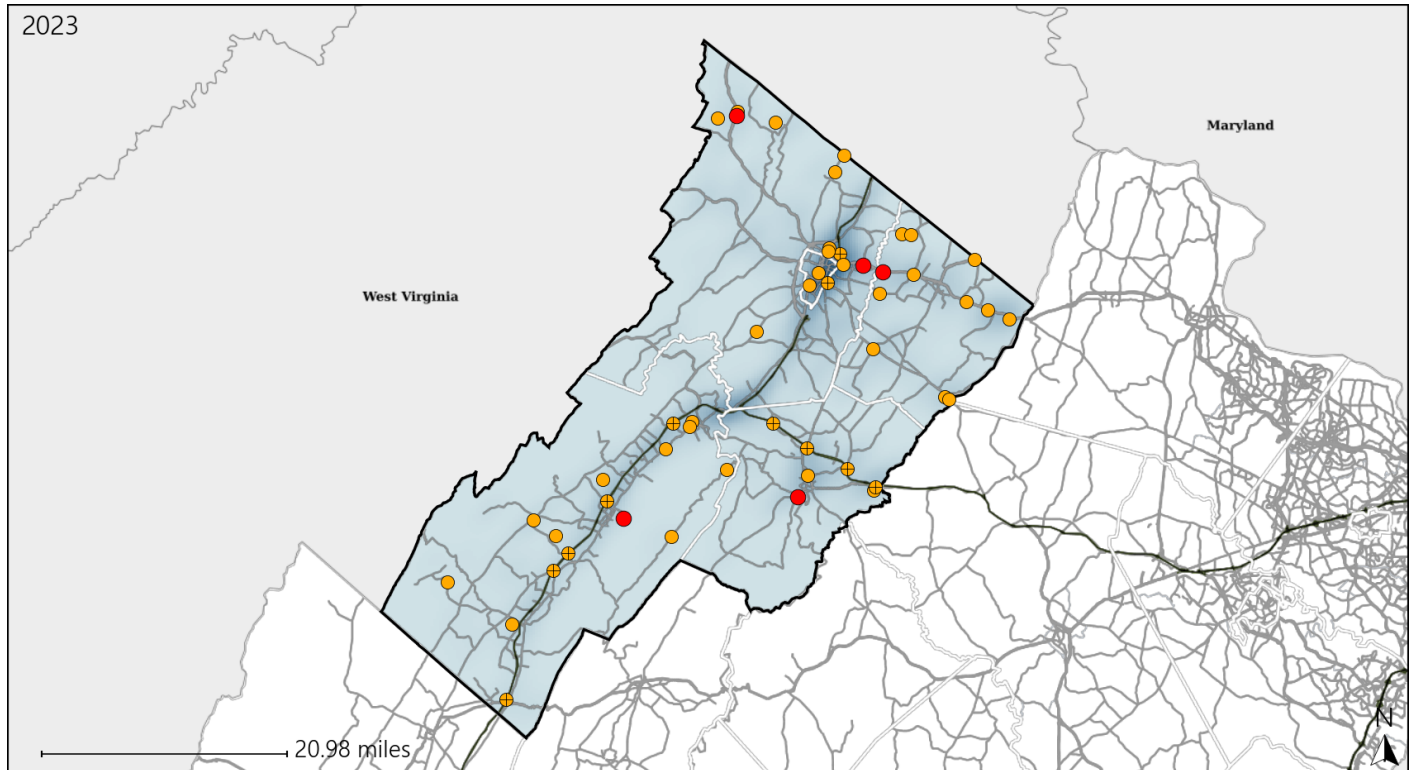


Available Crash Data - Calendar Year (CY)	CY 2020	CY 2021	CY 2022	CY 2023
Total Crashes	2821	3255	3419	3560
Fatal Crashes	26	22	29	18
Injury Crashes	707	849	759	863
Alcohol-Related Fatal Crashes	9	9	4	7
Percent of Alcohol-Related Fatal Crashes to Total Fatal Crashes	35%	41%	14%	39%
Alcohol-Related Injury Crashes	75	62	44	62
Percent of Alcohol-Related Injury Crashes to Total Injury Crashes	11%	7%	6%	7%

# Virginia Senate District 1 Speed Crash Statistics

Report Generated May, 2024

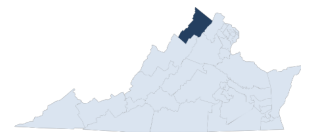
	Count	Highest Time Period(s)	Highest Day(s)	Highest Month(s)
<b>Fatal Crashes</b>	<b>5</b>	<b>9:00pm - 11:59pm</b>	<b>Thursday</b>	<b>March</b>
<b>Resulting Fatalities</b>	<b>7</b>	(60%)	(40%)	(40%)
<b>Serious Injury Crashes</b>	<b>45</b>	<b>3:00pm - 5:59pm</b>	<b>Saturday</b>	<b>November</b>
		(22%)	(29%)	(13%)



## Senate District 1 Speed-Related Crashes

Interstate Crashes                      Non-interstate Crashes  
 ● Fatal                                      ● Fatal  
 ⊕ Serious Injury                          ⊕ Serious Injury

The blue gradient represents the density of all speed-related crashes.

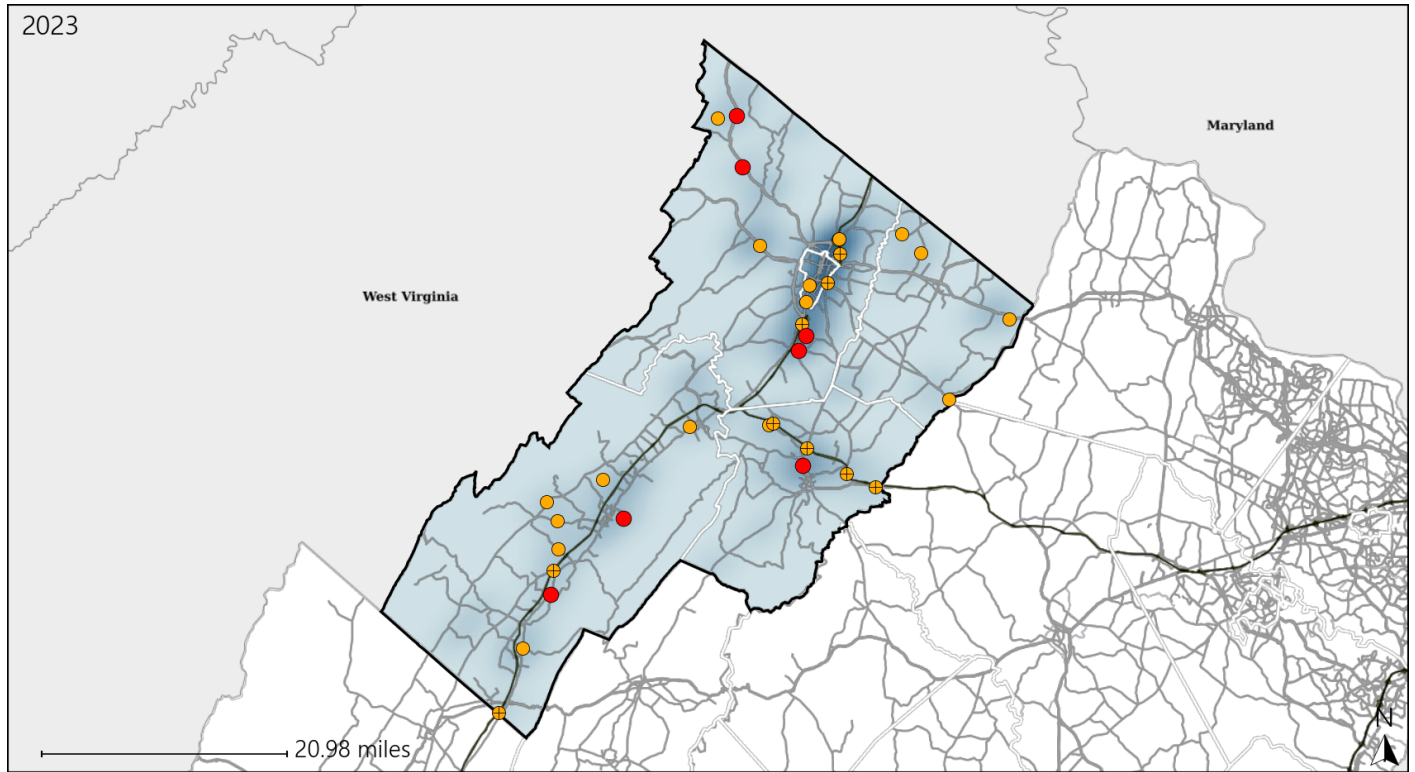


Available Crash Data - Calendar Year (CY)	CY 2020	CY 2021	CY 2022	CY 2023
Total Crashes	2821	3255	3419	3560
Fatal Crashes	26	22	29	18
Injury Crashes	707	849	759	863
Speed-Related Fatal Crashes	17	13	14	5
Percent of Speed-Related Fatal Crashes to Total Fatal Crashes	65%	59%	48%	28%
Speed-Related Injury Crashes	219	225	197	200
Percent of Speed-Related Injury Crashes to Total Injury Crashes	31%	27%	26%	23%

# Virginia Senate District 1 Unrestrained Crash Statistics

Report Generated May, 2024

	Count	Highest Time Period(s)	Highest Day(s)	Highest Month(s)
<b>Fatal Crashes</b>	<b>7</b>	<b>3:00pm - 5:59pm</b>	<b>Monday</b>	<b>April • January</b>
<b>Unrestrained Fatalities</b>	<b>7</b>	<b>(43%)</b>	<b>(43%)</b>	<b>(28%)</b>
<b>Serious Injury Crashes</b>	<b>26</b>	<b>Noon - 2:59pm</b>	<b>Monday</b>	<b>September</b>
		<b>(23%)</b>	<b>(19%)</b>	<b>(19%)</b>



## Senate District 1 Unrestrained-Related Crashes

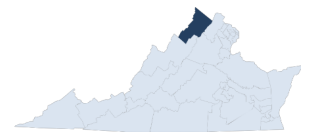
Interstate Crashes

- Fatal
- ⊕ Serious Injury

Non-interstate Crashes

- Fatal
- Serious Injury

The blue gradient represents the density of all unrestrained-related crashes.

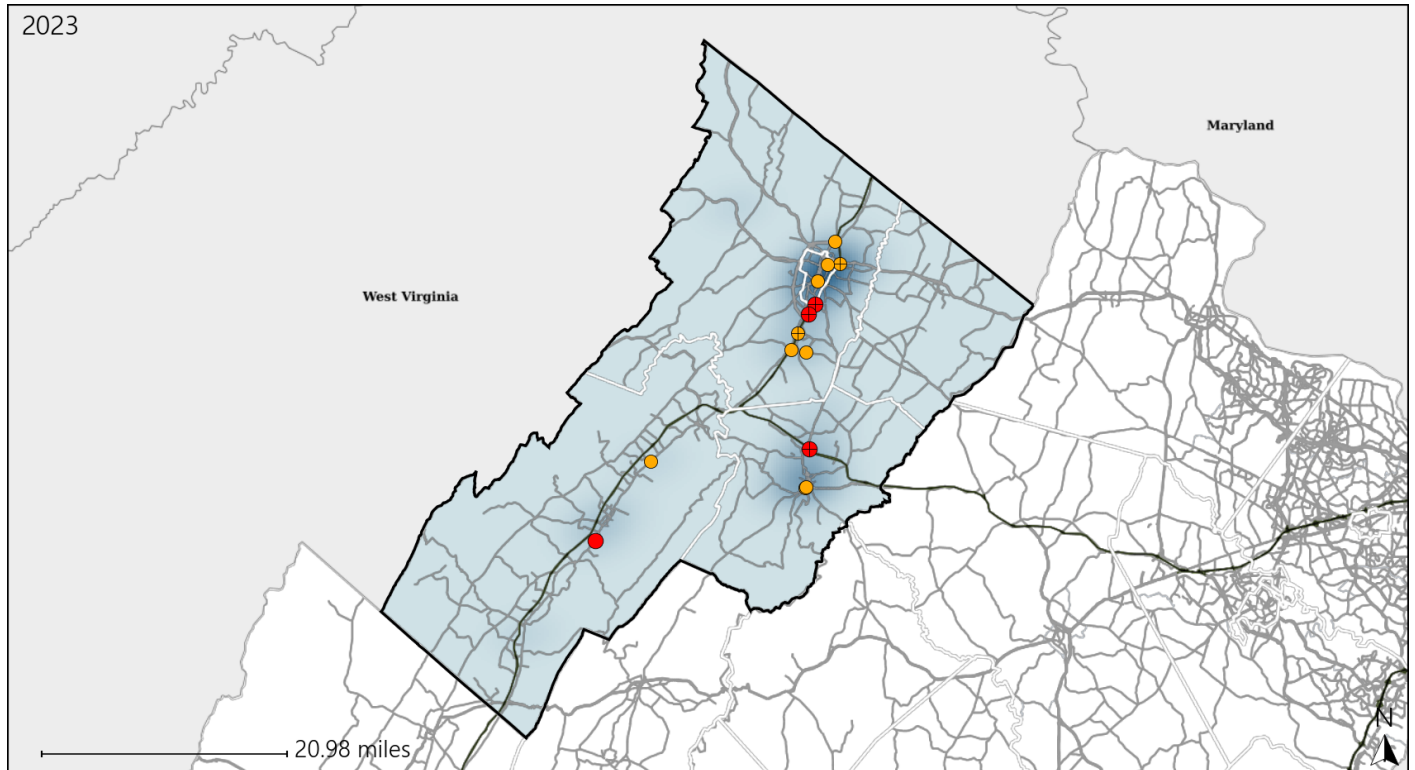


Available Crash Data - Calendar Year (CY)	CY 2020	CY 2021	CY 2022	CY 2023
<b>Total Crashes</b>	<b>2821</b>	<b>3255</b>	<b>3419</b>	<b>3560</b>
<b>Fatalities</b>	<b>29</b>	<b>22</b>	<b>32</b>	<b>20</b>
<b>Injuries</b>	<b>1005</b>	<b>1210</b>	<b>1112</b>	<b>1316</b>
<b>Unrestrained Fatalities</b>	<b>11</b>	<b>8</b>	<b>11</b>	<b>7</b>
<b>Percent of Unrestrained Fatalities to Total Fatalities</b>	<b>38%</b>	<b>36%</b>	<b>34%</b>	<b>35%</b>
<b>Unrestrained Injuries</b>	<b>88</b>	<b>89</b>	<b>111</b>	<b>98</b>
<b>Percent of Unrestrained Injuries to Total Injuries</b>	<b>9%</b>	<b>7%</b>	<b>10%</b>	<b>7%</b>

# Virginia Senate District 1 Pedestrian Crash Statistics

Report Generated May, 2024

	Count	Highest Time Period(s)	Highest Day(s)	Highest Month(s)
<b>Fatal Crashes</b>	<b>4</b>	<b>9:00am - 11:59am</b>	<b>Tuesday</b>	<b>August</b>
<b>Pedestrian Fatalities</b>	<b>4</b>	(50%)	(50%)	(50%)
<b>Serious Injury Crashes</b>	<b>10</b>	<b>9:00am - 11:59am</b>	<b>Friday</b>	<b>April - September</b>
		(30%)	(30%)	(60%)



### Senate District 1 Pedestrian-Related Crashes

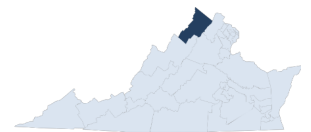
Interstate Crashes

Non-interstate Crashes

- Fatal
- Serious Injury

- Fatal
- Serious Injury

The blue gradient represents the density of all pedestrian-related crashes.

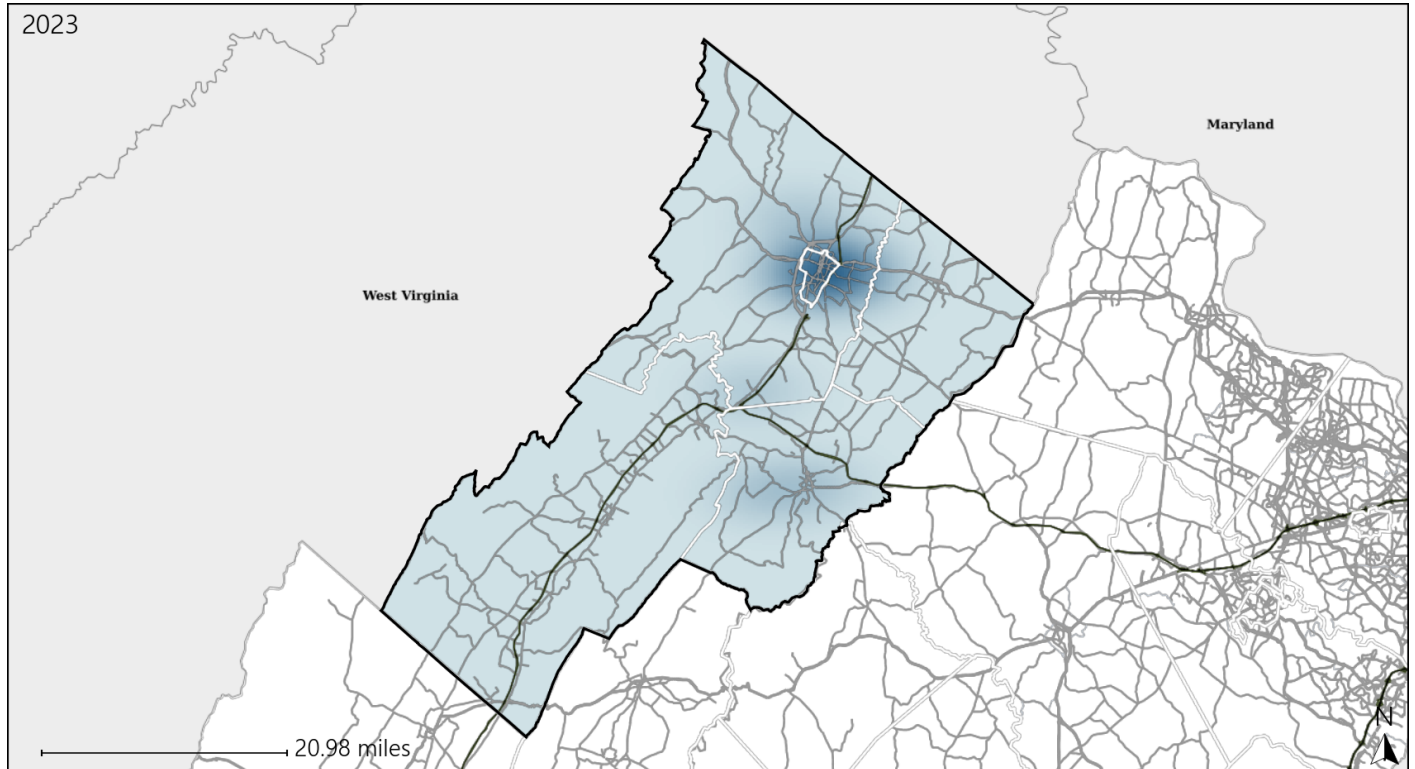


Available Crash Data - Calendar Year (CY)	CY 2020	CY 2021	CY 2022	CY 2023
Total Crashes	2821	3255	3419	3560
Fatal Crashes	26	22	29	18
Injury Crashes	707	849	759	863
Pedestrian-Related Fatal Crashes	1	1	2	4
Percent of Pedestrian-Related Fatal Crashes to Total Fatal Crashes	4%	5%	7%	22%
Pedestrian-Related Injury Crashes	18	21	14	31
Percent of Pedestrian-Related Injury Crashes to Total Injury Crashes	3%	2%	2%	4%

# Virginia Senate District 1 Bicycle Crash Statistics

Report Generated May, 2024

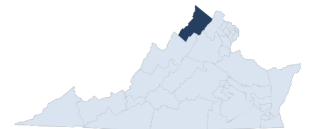
	Count	Highest Time Period(s)	Highest Day(s)	Highest Month(s)
<b>Fatal Crashes</b>	<b>0</b>	-	-	-
<b>Bicycle Fatalities</b>	<b>0</b>	-	-	-
<b>Serious Injury Crashes</b>	<b>0</b>	-	-	-



## Senate District 1 Bicycle-Related Crashes

Interstate Crashes Non-interstate Crashes  
 ● Fatal ● Fatal  
 ⊕ Serious Injury ● Serious Injury

The blue gradient represents the density of all bicycle-related crashes.

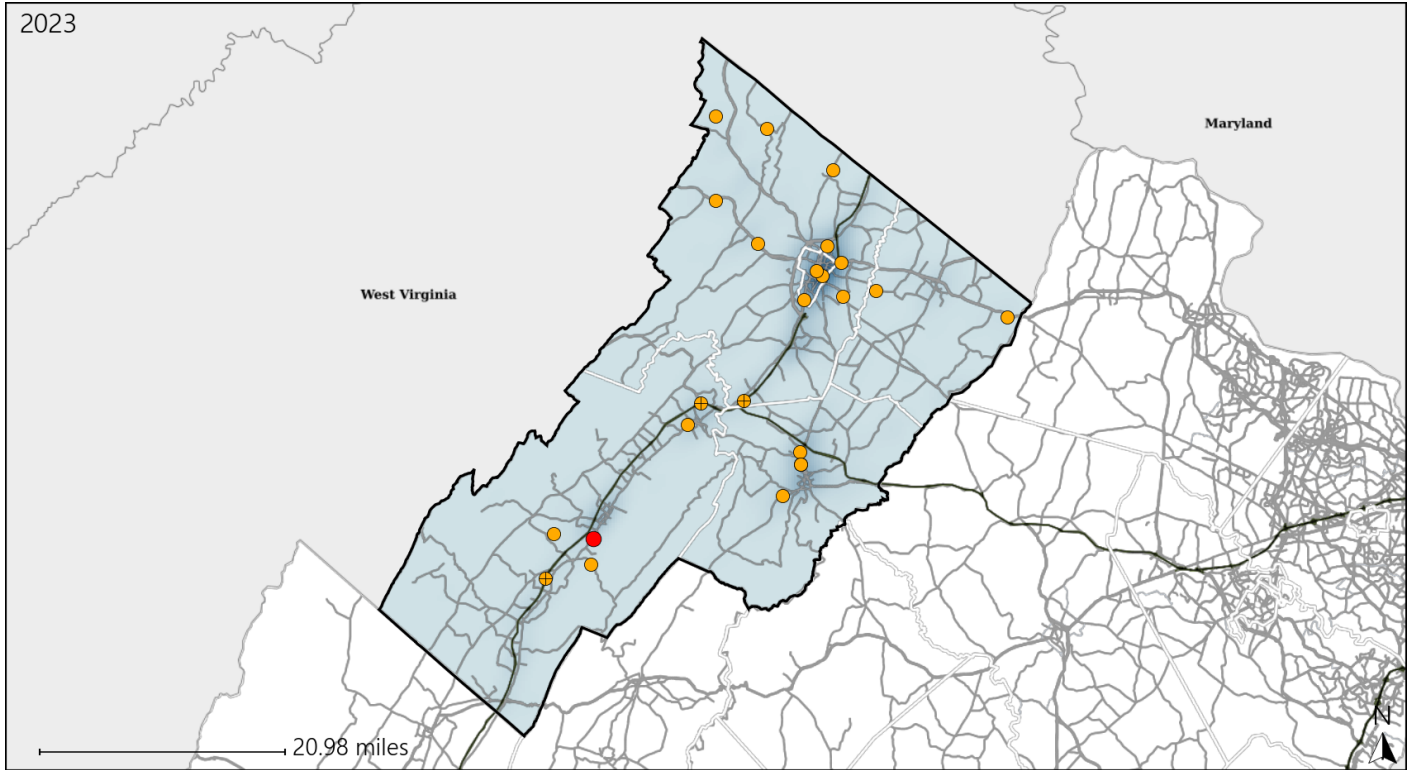


Available Crash Data - Calendar Year (CY)	CY 2020	CY 2021	CY 2022	CY 2023
Total Crashes	2821	3255	3419	3560
Fatal Crashes	26	22	29	18
Injury Crashes	707	849	759	863
Bicycle-Related Fatal Crashes	1	0	0	0
Percent of Bicycle-Related Fatal Crashes to Total Fatal Crashes	4%	0%	0%	0%
Bicycle-Related Injury Crashes	14	9	9	8
Percent of Bicycle-Related Injury Crashes to Total Injury Crashes	2%	1%	1%	1%

# Virginia Senate District 1 Distracted Driving Crash Statistics

Report Generated May, 2024

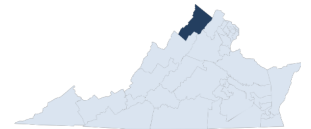
	Count	Highest Time Period(s)	Highest Day(s)	Highest Month(s)
<b>Fatal Crashes</b>	<b>1</b>	<b>9:00am - 11:59am</b>	<b>Tuesday</b>	<b>June</b>
<b>Resulting Fatalities</b>	<b>1</b>	(100%)	(100%)	(100%)
<b>Serious Injury Crashes</b>	<b>23</b>	<b>Midnight - 2:59am</b>	<b>Saturday</b>	<b>September</b>
		(26%)	(26%)	(26%)



## Senate District 1 Distracted Driving-Related Crashes

- |                    |                        |
|--------------------|------------------------|
| Interstate Crashes | Non-interstate Crashes |
| ● Fatal            | ● Fatal                |
| ⊕ Serious Injury   | ⊕ Serious Injury       |

The blue gradient represents the density of all distracted driving-related crashes.



Available Crash Data - Calendar Year (CY)	CY 2020	CY 2021	CY 2022	CY 2023
Total Crashes	2821	3255	3419	3560
Fatal Crashes	26	22	29	18
Injury Crashes	707	849	759	863
Distracted Driving-Related Fatal Crashes	5	3	1	1
Percent of Distracted Driving-Related Fatal Crashes to Total Fatal Crashes	19%	14%	3%	6%
Distracted Driving-Related Injury Crashes	159	170	155	173
Percent of Distracted Driving-Related Injury Crashes to Total Injury Crashes	22%	20%	20%	20%