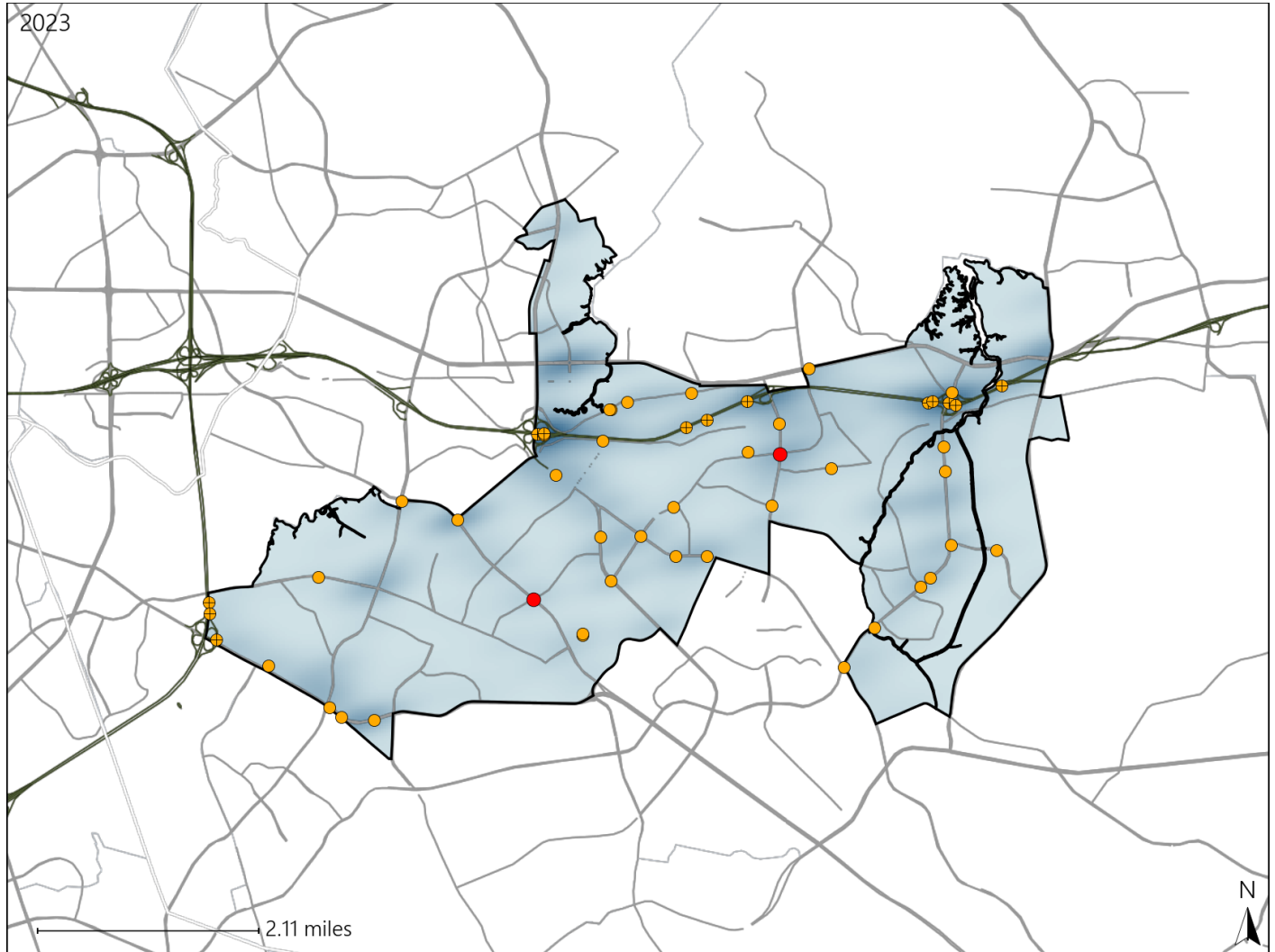


Virginia House District 97 Crash Statistics

Report Generated May, 2024

	Count	Highest Time Period(s)	Highest Day(s)	Highest Month(s)
Fatal Crashes	2	6:00pm - 8:59pm	Friday • Sunday	November • October
Resulting Fatalities	2	9:00am - 11:59am (100%)	(100%)	(100%)
Serious Injury Crashes	49	6:00pm - 8:59pm (29%)	Thursday (20%)	November (16%)



House District 97 Crashes

Interstate Crashes

- Fatal
- Serious Injury

Non-interstate Crashes

- Fatal
- Serious Injury

The blue gradient represents the density of all crashes.

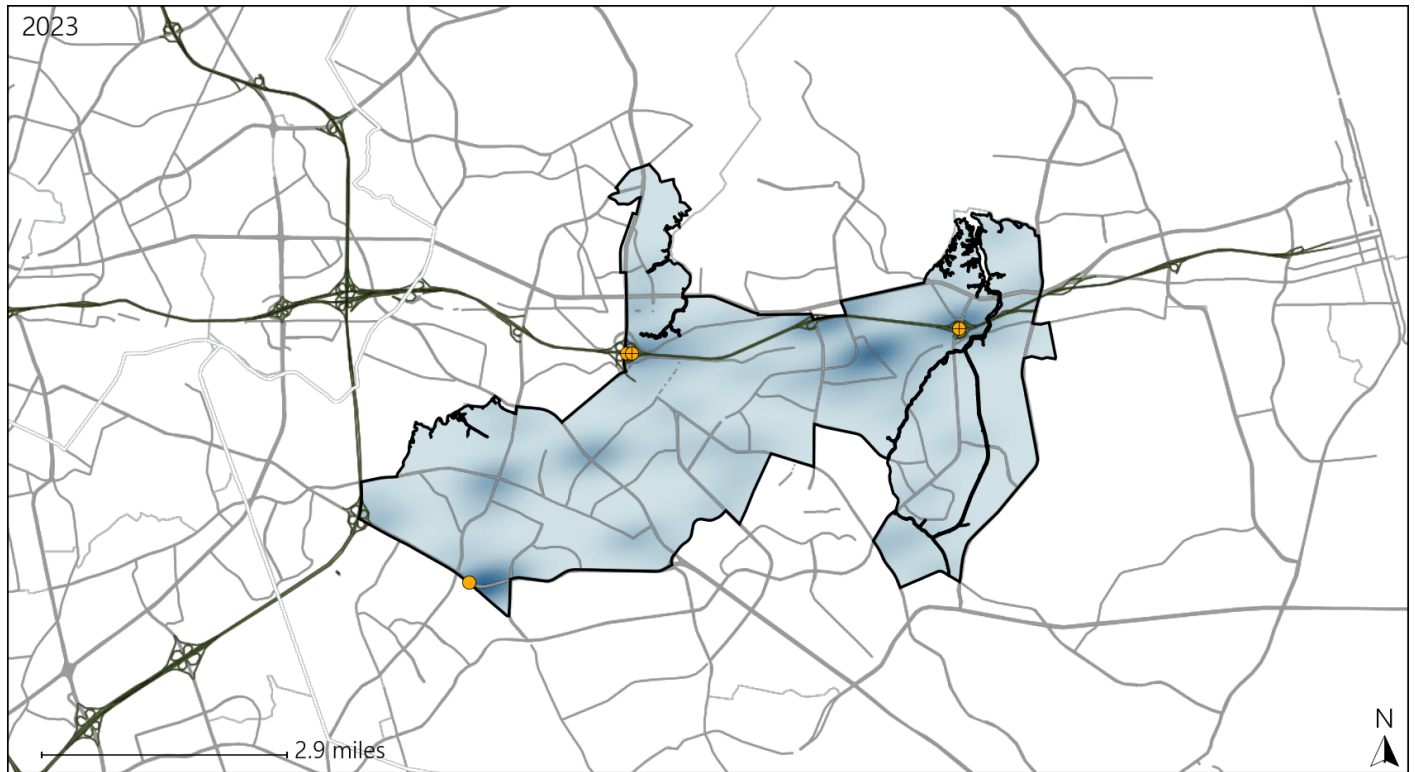


Available Crash Data - Calendar Year (CY)	CY 2020	CY 2021	CY 2022	CY 2023
Total Crashes	1421	1542	1415	1362
Fatal Crashes	3	11	9	2
Injury Crashes	442	499	450	422

Virginia House District 97 Alcohol Crash Statistics

Report Generated May, 2024

	Count	Highest Time Period(s)	Highest Day(s)	Highest Month(s)
Fatal Crashes	0	-	-	-
Resulting Fatalities	0	-	-	-
Serious Injury Crashes	4	3:00pm - 5:59pm 6:00pm - 8:59pm (50%)	Sunday (50%)	August • January (50%)



House District 97 Alcohol-Related Crashes

Interstate Crashes Non-interstate Crashes
 ● Fatal ● Fatal
 ⊕ Serious Injury ⊕ Serious Injury

The blue gradient represents the density of all alcohol-related crashes.

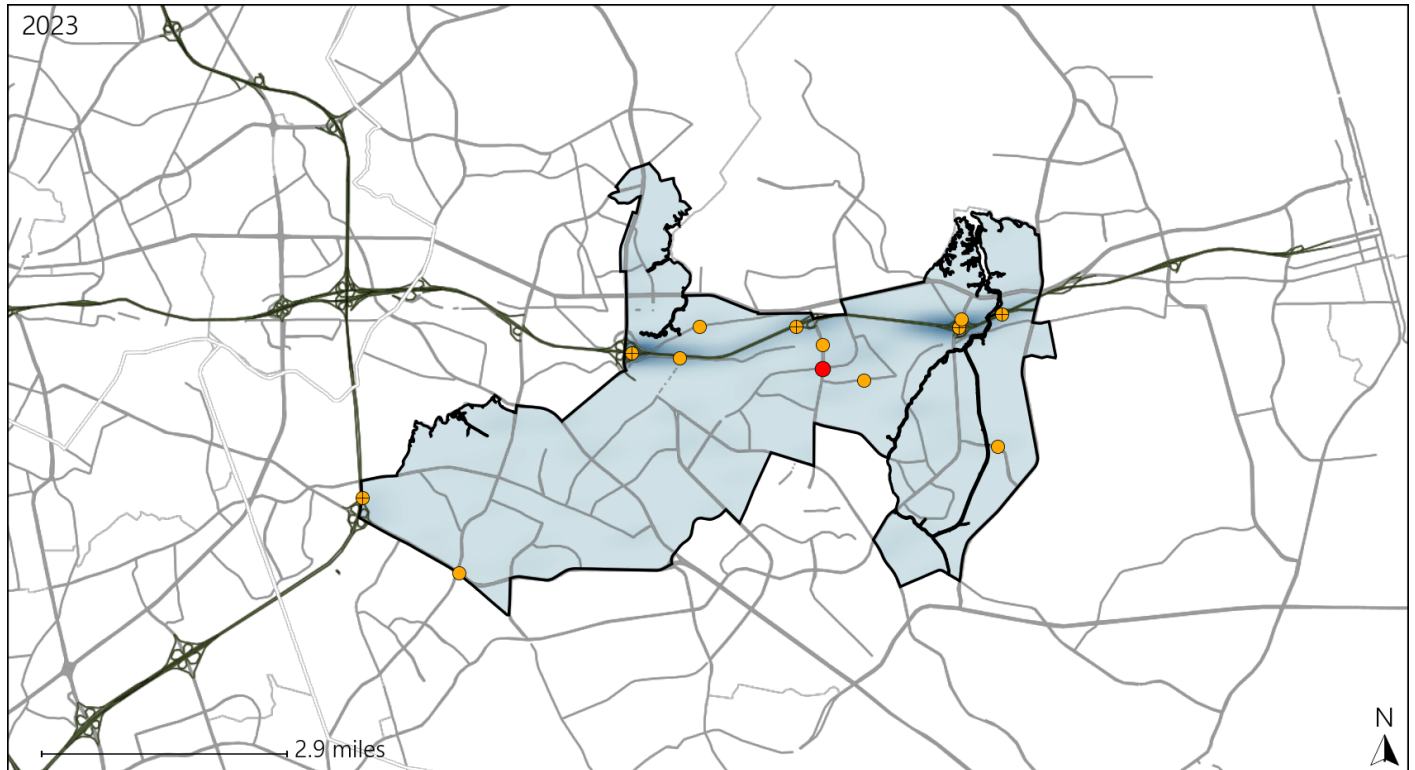


Available Crash Data - Calendar Year (CY)	CY 2020	CY 2021	CY 2022	CY 2023
Total Crashes	1421	1542	1415	1362
Fatal Crashes	3	11	9	2
Injury Crashes	442	499	450	422
Alcohol-Related Fatal Crashes	2	5	3	0
Percent of Alcohol-Related Fatal Crashes to Total Fatal Crashes	67%	45%	33%	0%
Alcohol-Related Injury Crashes	45	38	25	24
Percent of Alcohol-Related Injury Crashes to Total Injury Crashes	10%	8%	6%	6%





Virginia House District 97 Speed Crash Statistics

Report Generated May, 2024

	Count	Highest Time Period(s)	Highest Day(s)	Highest Month(s)
Fatal Crashes	1	6:00pm - 8:59pm	Sunday	October
Resulting Fatalities	1	(100%)	(100%)	(100%)
Serious Injury Crashes	12	6:00pm - 8:59pm	Sunday	April - December
		(42%)	(33%)	(34%)



House District 97 Speed-Related Crashes

Interstate Crashes Non-interstate Crashes
 Fatal  Fatal
 Serious Injury  Serious Injury

The blue gradient represents the density of all speed-related crashes.

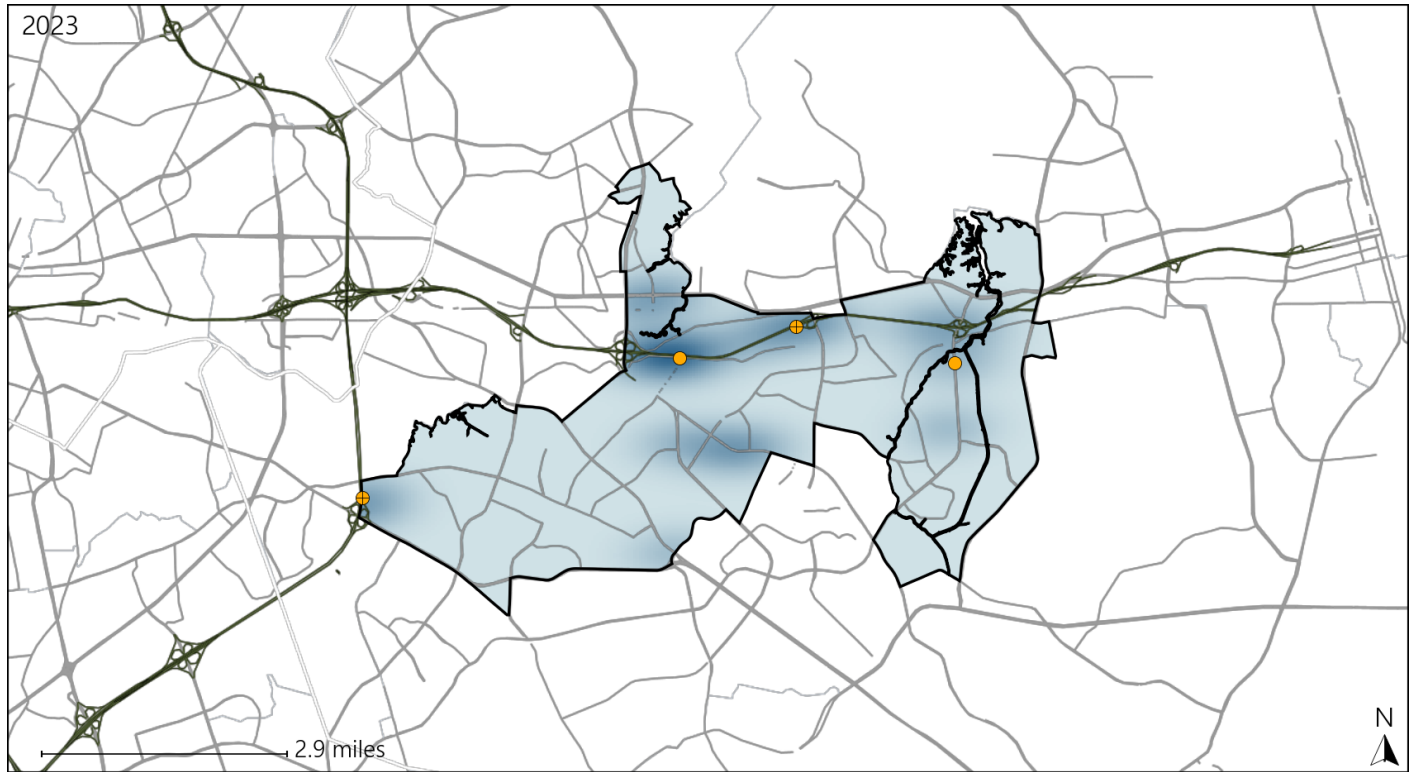


Available Crash Data - Calendar Year (CY)	CY 2020	CY 2021	CY 2022	CY 2023
Total Crashes	1421	1542	1415	1362
Fatal Crashes	3	11	9	2
Injury Crashes	442	499	450	422
Speed-Related Fatal Crashes	2	6	3	1
Percent of Speed-Related Fatal Crashes to Total Fatal Crashes	67%	55%	33%	50%
Speed-Related Injury Crashes	107	93	76	74
Percent of Speed-Related Injury Crashes to Total Injury Crashes	24%	19%	17%	18%

Virginia House District 97 Unrestrained Crash Statistics

Report Generated May, 2024

	Count	Highest Time Period(s)	Highest Day(s)	Highest Month(s)
Fatal Crashes	0	-	-	-
Unrestrained Fatalities	0	-	-	-
Serious Injury Crashes	4	6:00pm - 8:59pm (50%)	Friday (50%)	March (50%)



House District 97 Unrestrained-Related Crashes

Interstate Crashes

- Fatal
- Serious Injury

Non-interstate Crashes

- Fatal
- Serious Injury

The blue gradient represents the density of all unrestrained-related crashes.

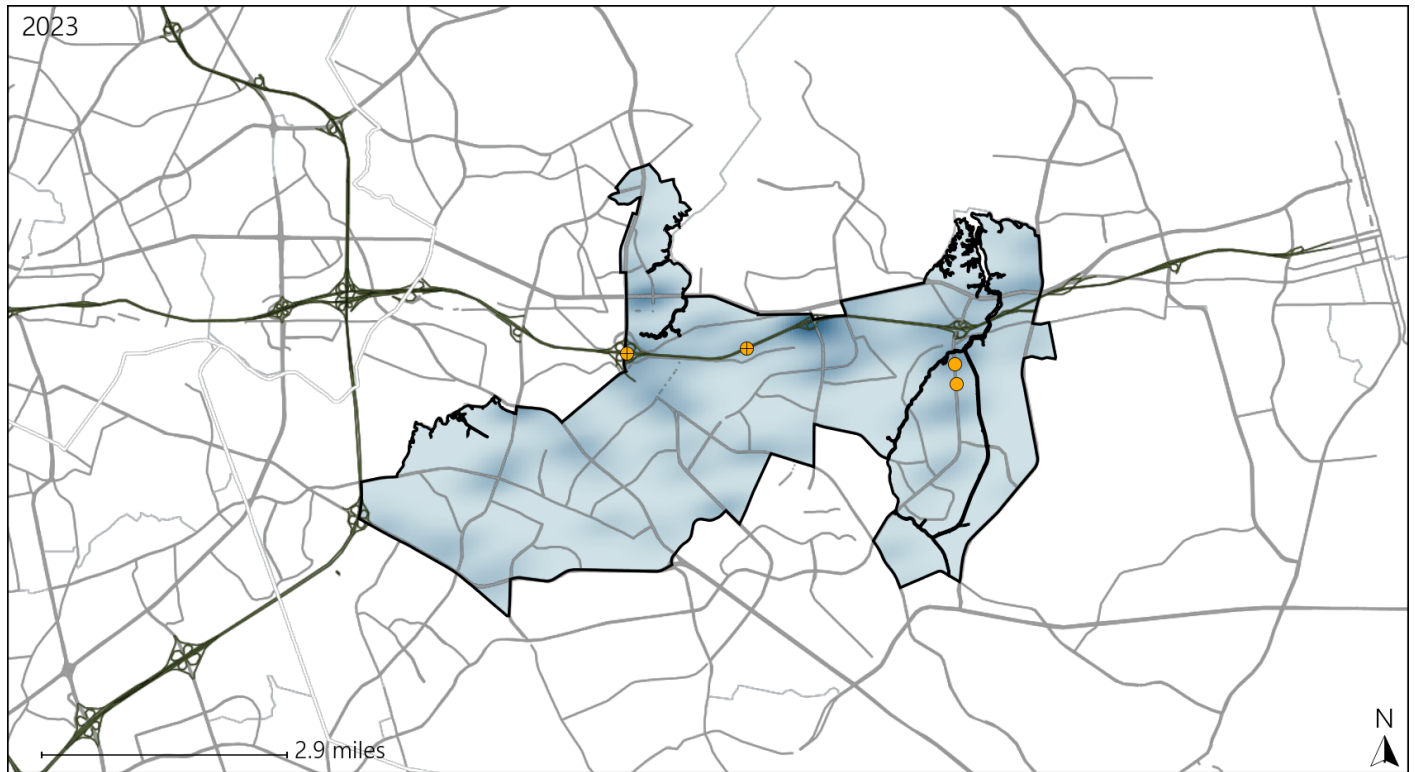


Available Crash Data - Calendar Year (CY)	CY 2020	CY 2021	CY 2022	CY 2023
Total Crashes	1421	1542	1415	1362
Fatalities	3	11	9	2
Injuries	769	844	770	689
Unrestrained Fatalities	0	2	1	0
Percent of Unrestrained Fatalities to Total Fatalities	0%	18%	11%	0%
Unrestrained Injuries	31	27	28	19
Percent of Unrestrained Injuries to Total Injuries	4%	3%	4%	3%

Virginia House District 97 Distracted Driving Crash Statistics

Report Generated May, 2024

	Count	Highest Time Period(s)	Highest Day(s)	Highest Month(s)
Fatal Crashes	0	-	-	-
Resulting Fatalities	0	-	-	-
Serious Injury Crashes	4	6:00pm - 8:59pm Noon - 2:59pm (100%)	Sunday (50%)	March (50%)



House District 97 Distracted Driving-Related Crashes

- | | |
|--------------------|------------------------|
| Interstate Crashes | Non-interstate Crashes |
| ● Fatal | ● Fatal |
| ⊕ Serious Injury | ⊕ Serious Injury |

The blue gradient represents the density of all distracted driving-related crashes.



Available Crash Data - Calendar Year (CY)	CY 2020	CY 2021	CY 2022	CY 2023
Total Crashes	1421	1542	1415	1362
Fatal Crashes	3	11	9	2
Injury Crashes	442	499	450	422
Distracted Driving-Related Fatal Crashes	1	1	1	0
Percent of Distracted Driving-Related Fatal Crashes to Total Fatal Crashes	33%	9%	11%	0%
Distracted Driving-Related Injury Crashes	75	98	62	62
Percent of Distracted Driving-Related Injury Crashes to Total Injury Crashes	17%	20%	14%	15%