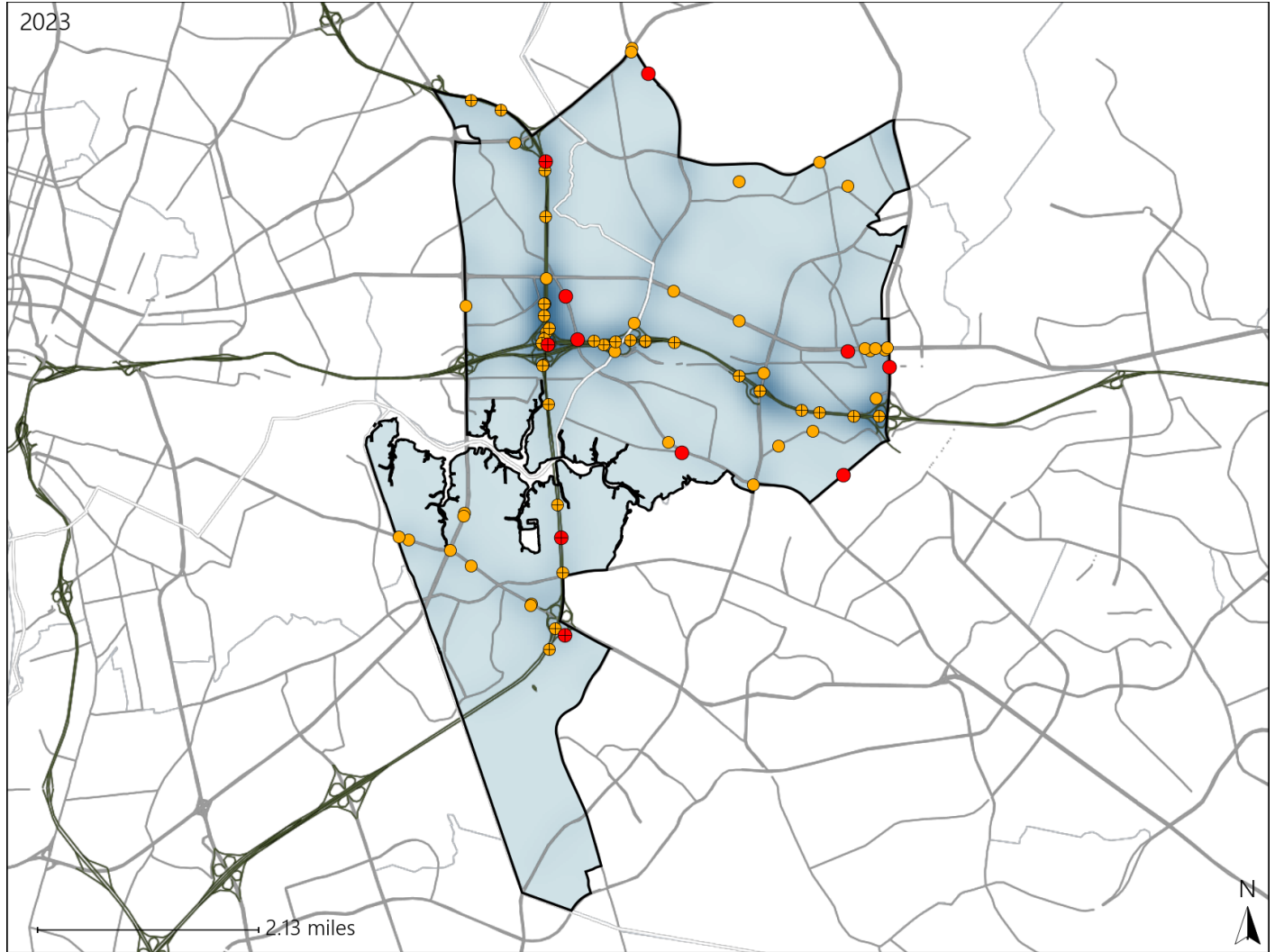


Virginia House District 95 Crash Statistics

Report Generated May, 2024

	Count	Highest Time Period(s)	Highest Day(s)	Highest Month(s)
Fatal Crashes	11	6:00pm - 8:59pm	Monday	July
Resulting Fatalities	11	(36%)	(27%)	(27%)
Serious Injury Crashes	63	6:00pm - 8:59pm	Sunday	August • March
		(25%)	(21%)	(22%)



House District 95 Crashes

Interstate Crashes

- Fatal
- Serious Injury

Non-interstate Crashes

- Fatal
- Serious Injury

The blue gradient represents the density of all crashes.

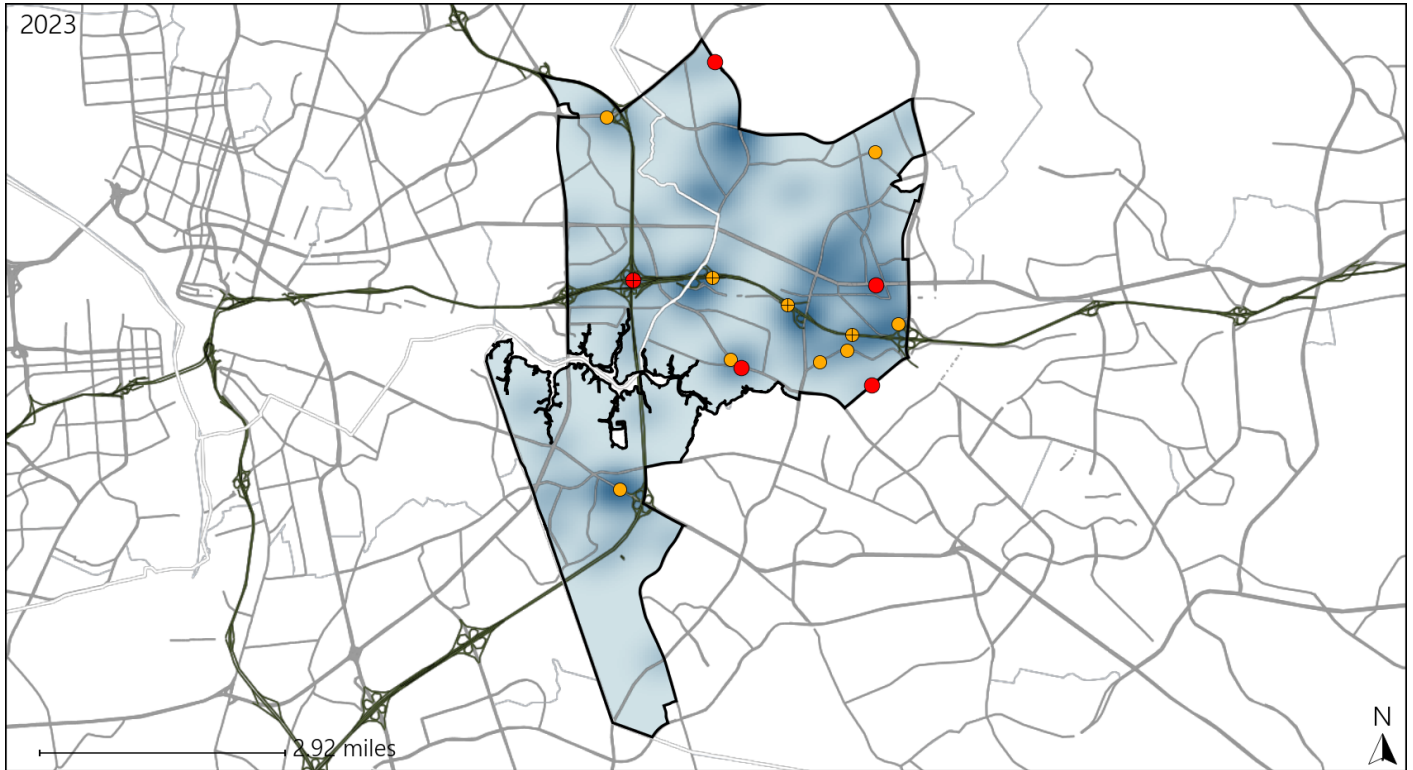


Available Crash Data - Calendar Year (CY)	CY 2020	CY 2021	CY 2022	CY 2023
Total Crashes	1777	2053	1769	1857
Fatal Crashes	8	10	7	11
Injury Crashes	540	657	523	541

Virginia House District 95 Alcohol Crash Statistics

Report Generated May, 2024

	Count	Highest Time Period(s)	Highest Day(s)	Highest Month(s)
Fatal Crashes	5	6:00pm - 8:59pm	Friday • Monday	December • January
Resulting Fatalities	5	Midnight - 2:59am (80%)	(80%)	(40%)
Serious Injury Crashes	10	9:00pm - 11:59pm (50%)	Friday (30%)	December • March (40%)



House District 95 Alcohol-Related Crashes

Interstate Crashes

- Fatal
- Serious Injury

Non-interstate Crashes

- Fatal
- Serious Injury

The blue gradient represents the density of all alcohol-related crashes.

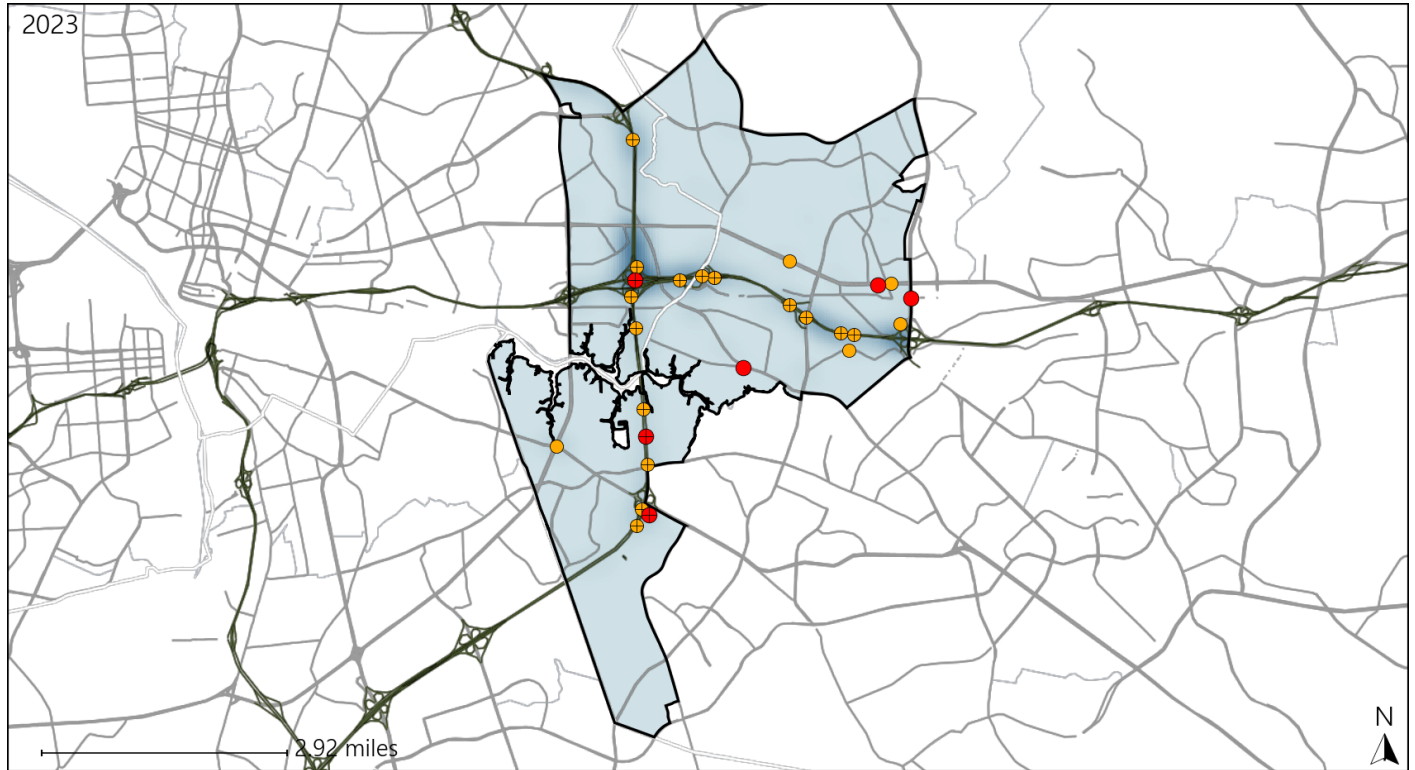


Available Crash Data - Calendar Year (CY)	CY 2020	CY 2021	CY 2022	CY 2023
Total Crashes	1777	2053	1769	1857
Fatal Crashes	8	10	7	11
Injury Crashes	540	657	523	541
Alcohol-Related Fatal Crashes	4	7	2	5
Percent of Alcohol-Related Fatal Crashes to Total Fatal Crashes	50%	70%	29%	45%
Alcohol-Related Injury Crashes	32	55	32	38
Percent of Alcohol-Related Injury Crashes to Total Injury Crashes	6%	8%	6%	7%

Virginia House District 95 Speed Crash Statistics

Report Generated May, 2024

	Count	Highest Time Period(s)	Highest Day(s)	Highest Month(s)
Fatal Crashes	6	6:00pm - 8:59pm	Friday • Monday	December
Resulting Fatalities	6	Midnight - 2:59am (66%)	(34%)	(33%)
Serious Injury Crashes	21	6:00pm - 8:59pm (38%)	Sunday (33%)	February • May (28%)



House District 95 Speed-Related Crashes

Interstate Crashes

Non-interstate Crashes

- Fatal
- Serious Injury

- Fatal
- Serious Injury

The blue gradient represents the density of all speed-related crashes.

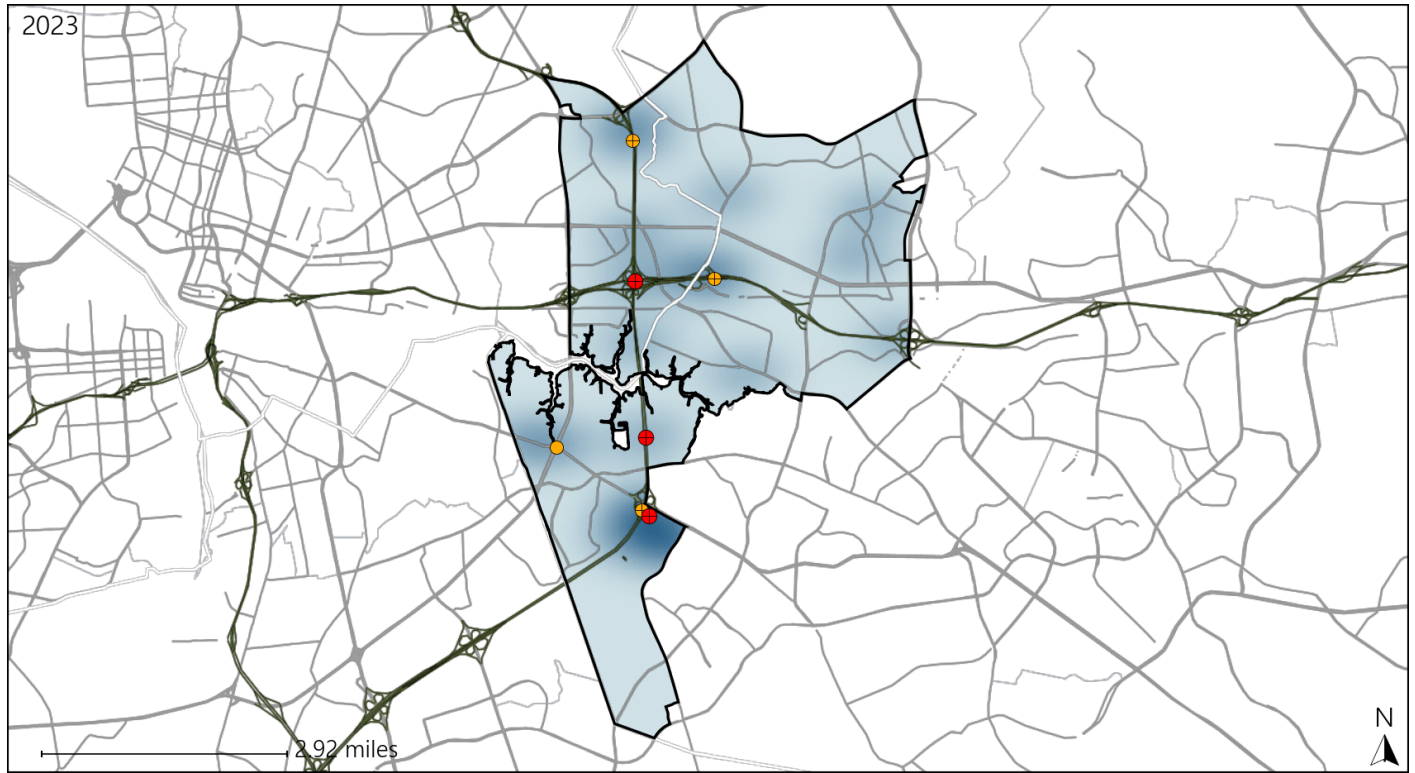


Available Crash Data - Calendar Year (CY)	CY 2020	CY 2021	CY 2022	CY 2023
Total Crashes	1777	2053	1769	1857
Fatal Crashes	8	10	7	11
Injury Crashes	540	657	523	541
Speed-Related Fatal Crashes	6	5	4	6
Percent of Speed-Related Fatal Crashes to Total Fatal Crashes	75%	50%	57%	55%
Speed-Related Injury Crashes	167	179	134	135
Percent of Speed-Related Injury Crashes to Total Injury Crashes	31%	27%	26%	25%

Virginia House District 95 Unrestrained Crash Statistics

Report Generated May, 2024

	Count	Highest Time Period(s)	Highest Day(s)	Highest Month(s)
Fatal Crashes	3	6:00am - 8:59am	Monday • Sunday	December • January
Unrestrained Fatalities	3	6:00pm - 8:59pm (66%)	(66%)	(66%)
Serious Injury Crashes	4	3:00am - 5:59am 3:00pm - 5:59pm (50%)	Friday • Monday (50%)	August • June (50%)



House District 95 Unrestrained-Related Crashes

- | | |
|--------------------|------------------------|
| Interstate Crashes | Non-interstate Crashes |
| ● Fatal | ● Fatal |
| ● Serious Injury | ● Serious Injury |

The blue gradient represents the density of all unrestrained-related crashes.

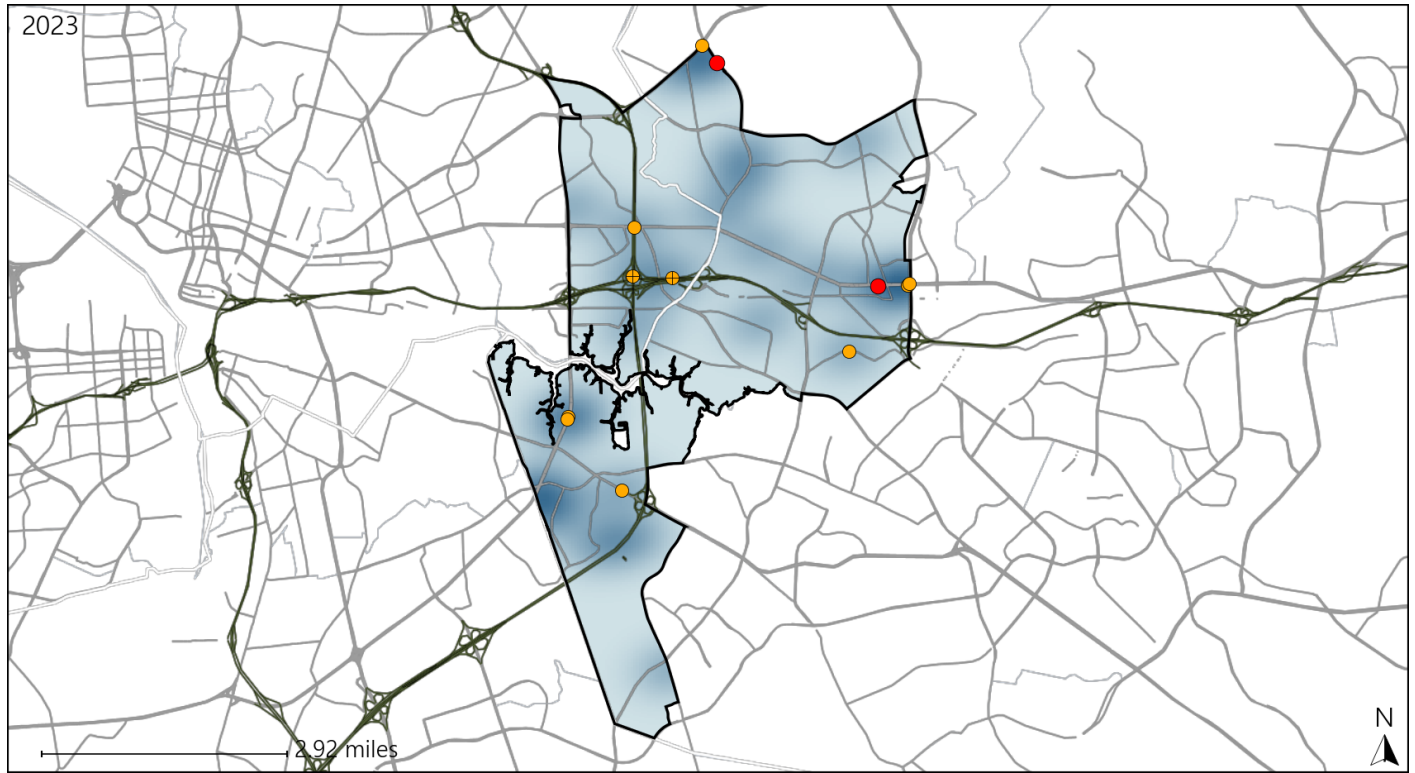


Available Crash Data - Calendar Year (CY)	CY 2020	CY 2021	CY 2022	CY 2023
Total Crashes	1777	2053	1769	1857
Fatalities	9	11	7	11
Injuries	809	1024	829	856
Unrestrained Fatalities	3	1	2	3
Percent of Unrestrained Fatalities to Total Fatalities	33%	9%	29%	27%
Unrestrained Injuries	31	40	28	23
Percent of Unrestrained Injuries to Total Injuries	4%	4%	3%	3%

Virginia House District 95 Pedestrian Crash Statistics

Report Generated May, 2024

	Count	Highest Time Period(s)	Highest Day(s)	Highest Month(s)
Fatal Crashes	2	6:00pm - 8:59pm	Friday • Monday	December • July
Pedestrian Fatalities	2	9:00pm - 11:59pm (100%)	(100%)	(100%)
Serious Injury Crashes	10	6:00pm - 8:59pm	Monday • Sunday	December
		9:00pm - 11:59pm (60%)	(40%)	(30%)



House District 95 Pedestrian-Related Crashes

- | | |
|--------------------|------------------------|
| Interstate Crashes | Non-interstate Crashes |
| ● Fatal | ● Fatal |
| ● Serious Injury | ● Serious Injury |

The blue gradient represents the density of all pedestrian-related crashes.

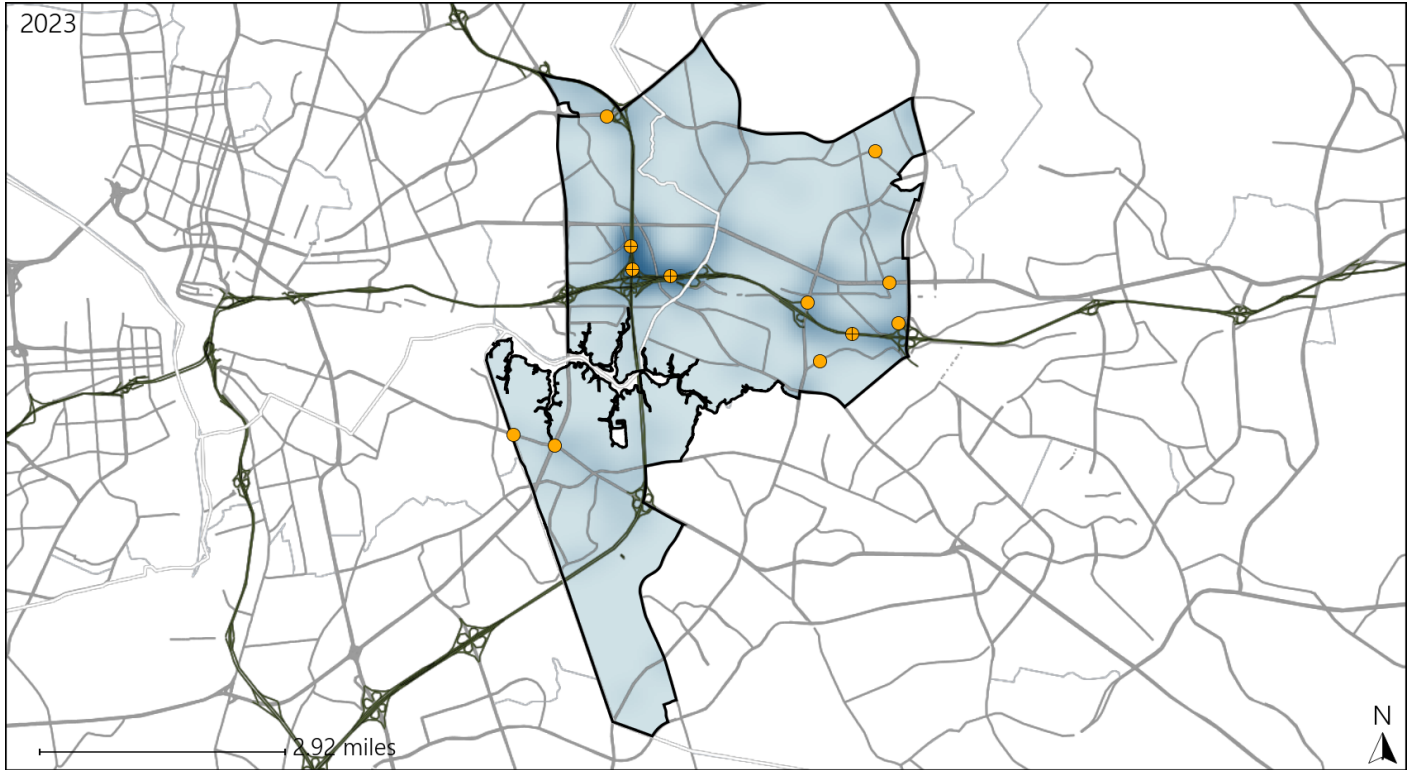


Available Crash Data - Calendar Year (CY)	CY 2020	CY 2021	CY 2022	CY 2023
Total Crashes	1777	2053	1769	1857
Fatal Crashes	8	10	7	11
Injury Crashes	540	657	523	541
Pedestrian-Related Fatal Crashes	3	4	3	2
Percent of Pedestrian-Related Fatal Crashes to Total Fatal Crashes	38%	40%	43%	18%
Pedestrian-Related Injury Crashes	14	20	22	26
Percent of Pedestrian-Related Injury Crashes to Total Injury Crashes	3%	3%	4%	5%

Virginia House District 95 Distracted Driving Crash Statistics

Report Generated May, 2024

	Count	Highest Time Period(s)	Highest Day(s)	Highest Month(s)
Fatal Crashes	0	-	-	-
Resulting Fatalities	0	-	-	-
Serious Injury Crashes	12	9:00pm - 11:59pm (50%)	Saturday (25%)	March (25%)



House District 95 Distracted Driving-Related Crashes

- | | |
|--------------------|------------------------|
| Interstate Crashes | Non-interstate Crashes |
| Fatal | Fatal |
| Serious Injury | Serious Injury |

The blue gradient represents the density of all distracted driving-related crashes.



Available Crash Data - Calendar Year (CY)	CY 2020	CY 2021	CY 2022	CY 2023
Total Crashes	1777	2053	1769	1857
Fatal Crashes	8	10	7	11
Injury Crashes	540	657	523	541
Distracted Driving-Related Fatal Crashes	3	0	1	0
Percent of Distracted Driving-Related Fatal Crashes to Total Fatal Crashes	38%	0%	14%	0%
Distracted Driving-Related Injury Crashes	80	105	72	90
Percent of Distracted Driving-Related Injury Crashes to Total Injury Crashes	15%	16%	14%	17%