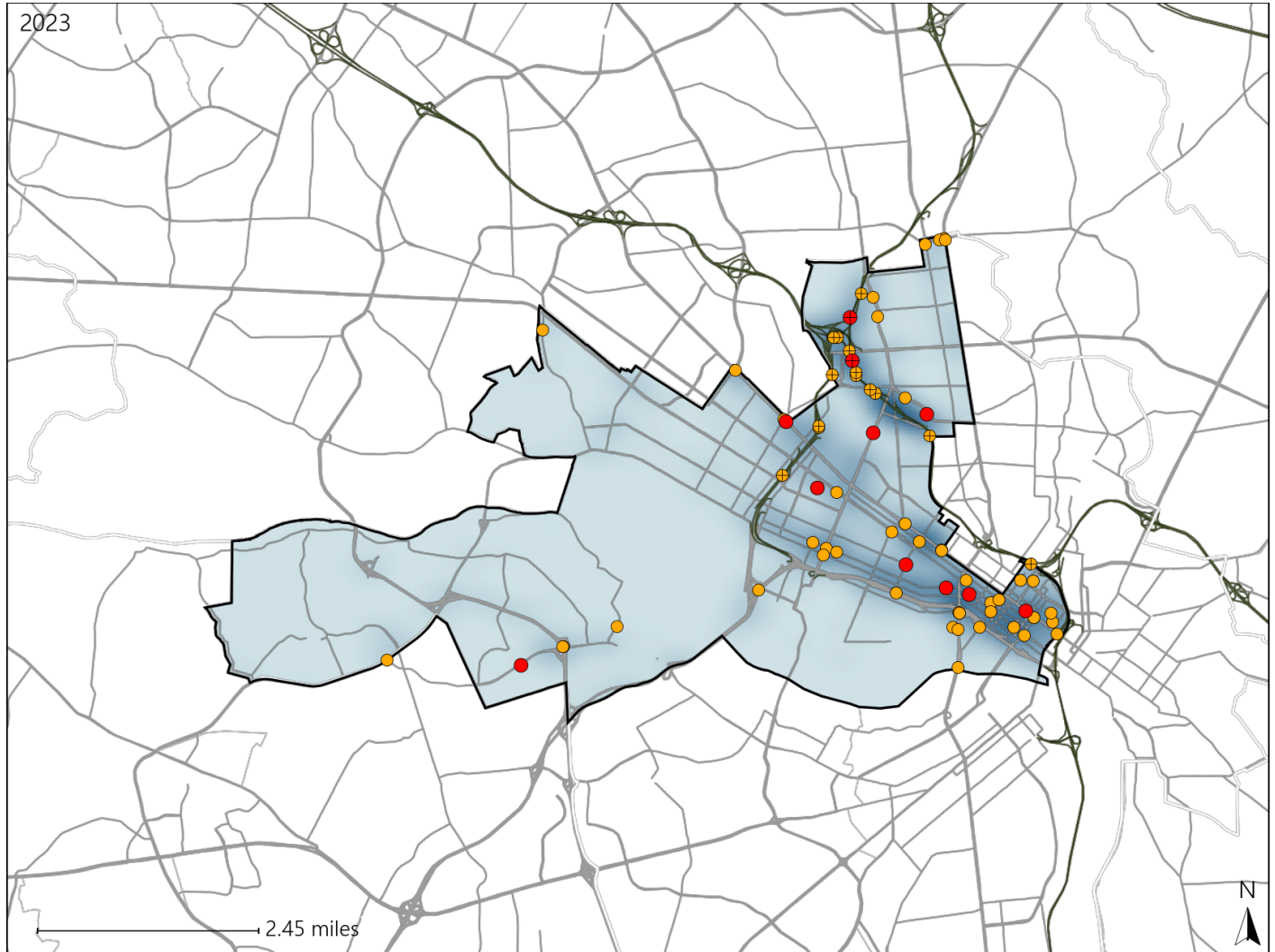


Virginia House District 78 Crash Statistics

Report Generated May, 2024

	Count	Highest Time Period(s)	Highest Day(s)	Highest Month(s)
Fatal Crashes	11	6:00am - 8:59am	Thursday	September
Resulting Fatalities	11	6:00pm - 8:59pm (54%)	(36%)	(27%)
Serious Injury Crashes	61	3:00pm - 5:59pm (23%)	Saturday • Wednesday (42%)	February (15%)



House District 78 Crashes

Interstate Crashes

- Fatal
- Serious Injury

Non-interstate Crashes

- Fatal
- Serious Injury

The blue gradient represents the density of all crashes.

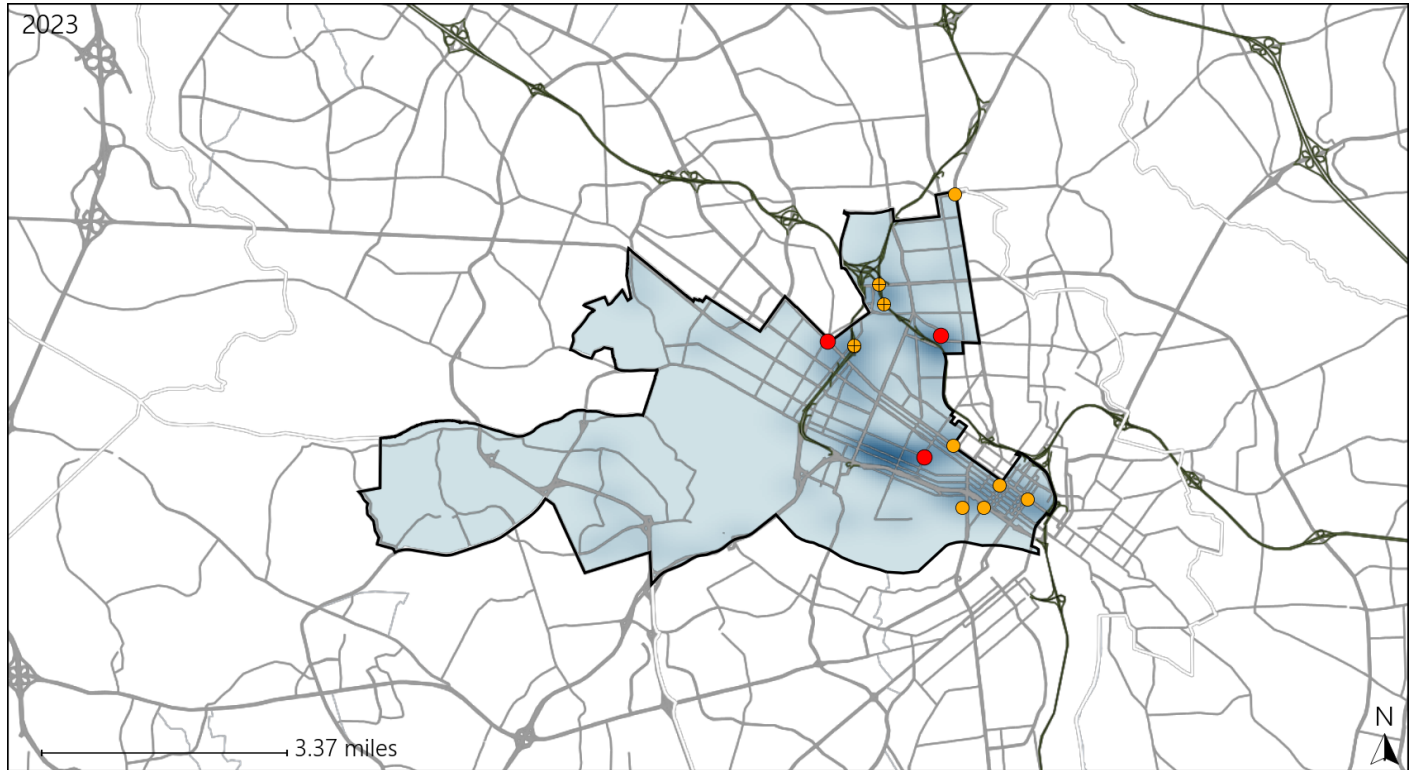


Available Crash Data - Calendar Year (CY)	CY 2020	CY 2021	CY 2022	CY 2023
Total Crashes	1873	2236	2257	2389
Fatal Crashes	7	4	7	11
Injury Crashes	468	535	570	681

Virginia House District 78 Alcohol Crash Statistics

Report Generated May, 2024

	Count	Highest Time Period(s)	Highest Day(s)	Highest Month(s)
Fatal Crashes	3	6:00am - 8:59am	Friday • Saturday	August • January
Resulting Fatalities	3	9:00pm - 11:59pm (66%)	(66%)	(66%)
Serious Injury Crashes	10	9:00pm - 11:59pm (40%)	Friday • Saturday (60%)	February (20%)



House District 78 Alcohol-Related Crashes

Interstate Crashes

Non-interstate Crashes

- Fatal
- Serious Injury

- Fatal
- Serious Injury

The blue gradient represents the density of all alcohol-related crashes.

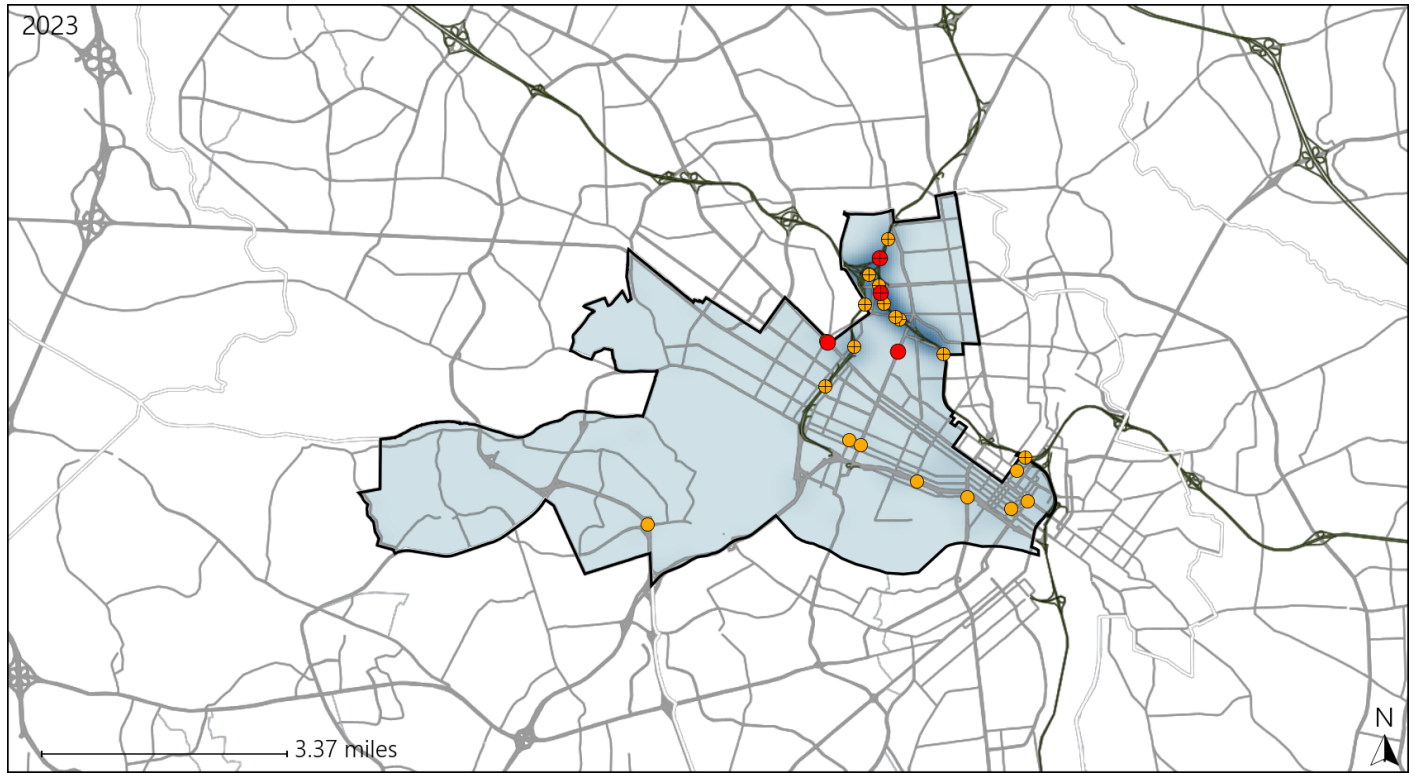


Available Crash Data - Calendar Year (CY)	CY 2020	CY 2021	CY 2022	CY 2023
Total Crashes	1873	2236	2257	2389
Fatal Crashes	7	4	7	11
Injury Crashes	468	535	570	681
Alcohol-Related Fatal Crashes	3	1	3	3
Percent of Alcohol-Related Fatal Crashes to Total Fatal Crashes	43%	25%	43%	27%
Alcohol-Related Injury Crashes	18	23	34	46
Percent of Alcohol-Related Injury Crashes to Total Injury Crashes	4%	4%	6%	7%

Virginia House District 78 Speed Crash Statistics

Report Generated May, 2024

	Count	Highest Time Period(s)	Highest Day(s)	Highest Month(s)
Fatal Crashes	4	3:00am - 5:59am	Friday • Monday	September
Resulting Fatalities	4	3:00pm - 5:59pm (50%)	(50%)	(50%)
Serious Injury Crashes	20	3:00pm - 5:59pm 6:00am - 8:59am (30%)	Saturday (30%)	February (25%)



House District 78 Speed-Related Crashes

Interstate Crashes Non-interstate Crashes
 ● Fatal ● Fatal
 ⊕ Serious Injury ⊕ Serious Injury

The blue gradient represents the density of all speed-related crashes.

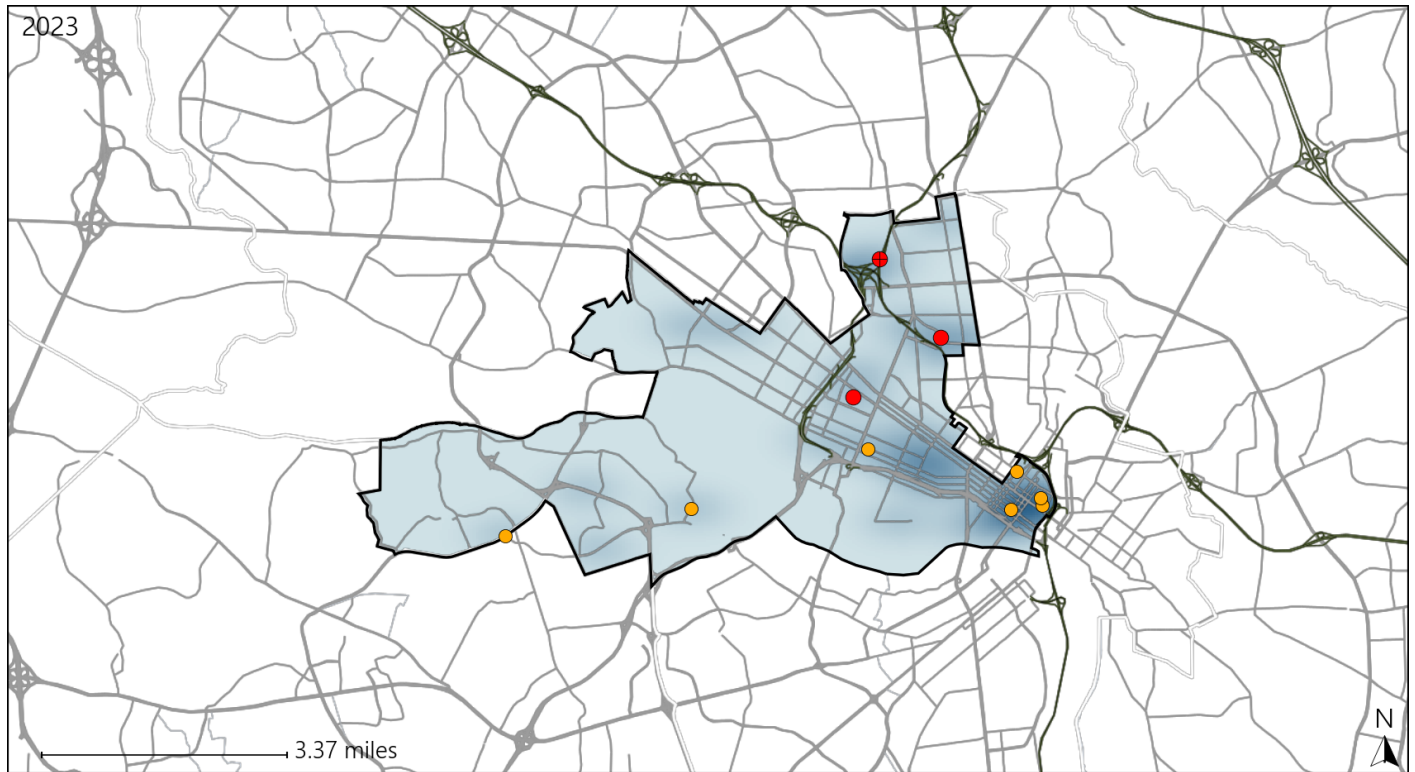


Available Crash Data - Calendar Year (CY)	CY 2020	CY 2021	CY 2022	CY 2023
Total Crashes	1873	2236	2257	2389
Fatal Crashes	7	4	7	11
Injury Crashes	468	535	570	681
Speed-Related Fatal Crashes	4	2	3	4
Percent of Speed-Related Fatal Crashes to Total Fatal Crashes	57%	50%	43%	36%
Speed-Related Injury Crashes	85	92	97	108
Percent of Speed-Related Injury Crashes to Total Injury Crashes	18%	17%	17%	16%

Virginia House District 78 Unrestrained Crash Statistics

Report Generated May, 2024

	Count	Highest Time Period(s)	Highest Day(s)	Highest Month(s)
Fatal Crashes	3	Noon - 2:59pm	Monday • Sunday	September
Unrestrained Fatalities	3	(67%)	(66%)	(67%)
Serious Injury Crashes	7	3:00pm - 5:59pm 9:00pm - 11:59pm	Saturday • Tuesday	February • October
		(58%)	(58%)	(58%)



House District 78 Unrestrained-Related Crashes

- | | |
|--------------------|------------------------|
| Interstate Crashes | Non-interstate Crashes |
| ● Fatal | ● Fatal |
| ⊕ Serious Injury | ⊕ Serious Injury |

The blue gradient represents the density of all unrestrained-related crashes.

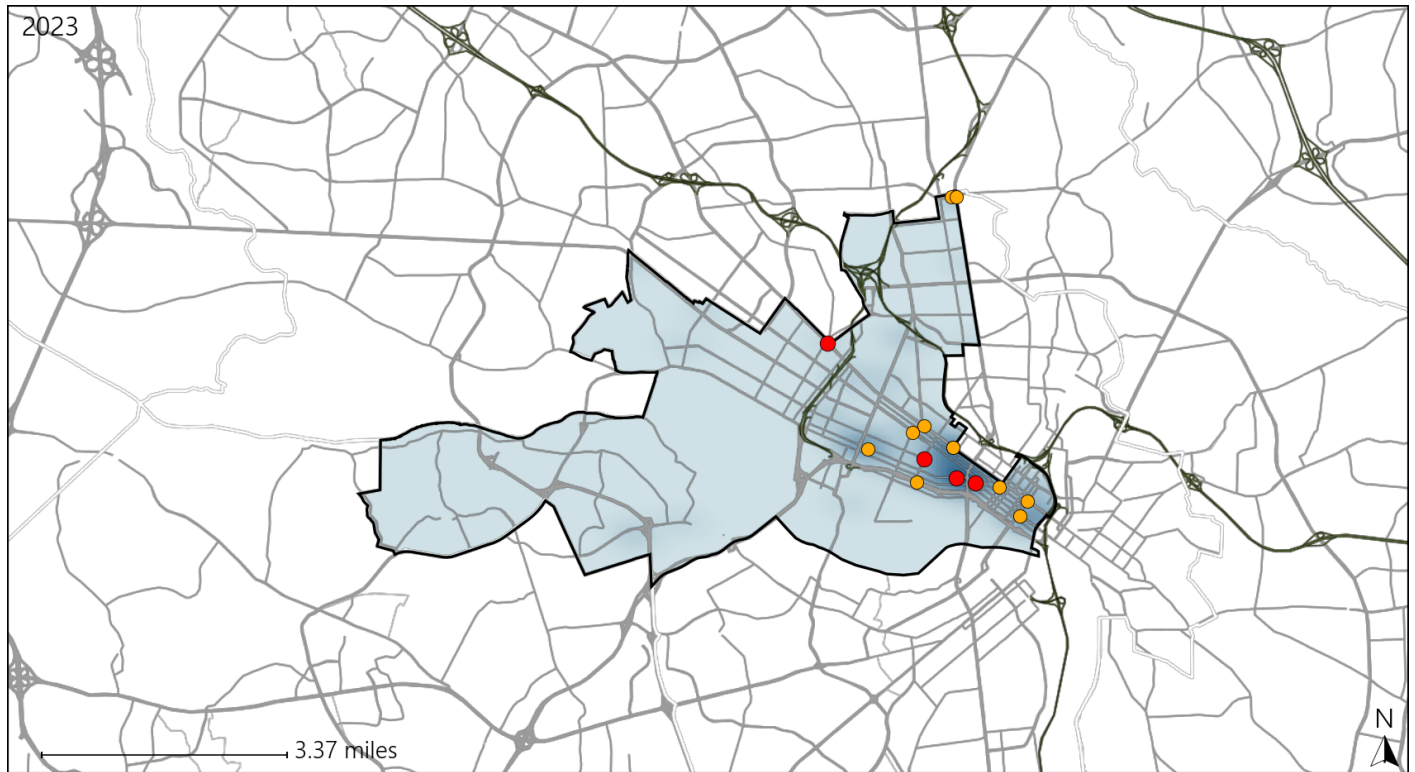


Available Crash Data - Calendar Year (CY)	CY 2020	CY 2021	CY 2022	CY 2023
Total Crashes	1873	2236	2257	2389
Fatalities	8	4	7	11
Injuries	759	864	898	1042
Unrestrained Fatalities	5	1	2	3
Percent of Unrestrained Fatalities to Total Fatalities	63%	25%	29%	27%
Unrestrained Injuries	44	41	32	43
Percent of Unrestrained Injuries to Total Injuries	6%	5%	4%	4%

Virginia House District 78 Pedestrian Crash Statistics

Report Generated May, 2024

	Count	Highest Time Period(s)	Highest Day(s)	Highest Month(s)
Fatal Crashes	4	6:00am - 8:59am	Friday	August + January
Pedestrian Fatalities	4	(50%)	(50%)	(50%)
Serious Injury Crashes	13	3:00pm - 5:59pm 9:00pm - 11:59pm	Sunday	February
		(62%)	(23%)	(23%)



House District 78 Pedestrian-Related Crashes

- | | |
|--------------------|------------------------|
| Interstate Crashes | Non-interstate Crashes |
| ● Fatal | ● Fatal |
| ⊕ Serious Injury | ⊕ Serious Injury |

The blue gradient represents the density of all pedestrian-related crashes.

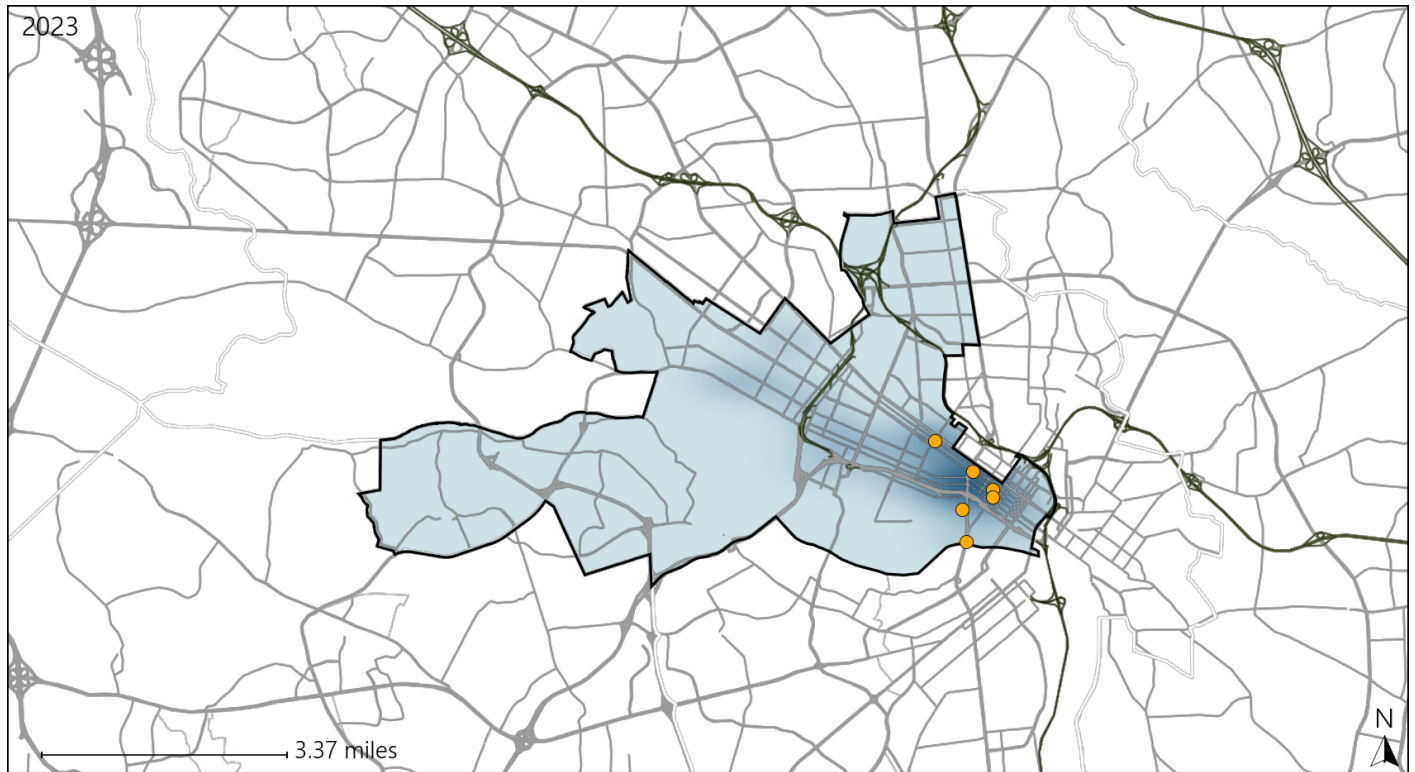


Available Crash Data - Calendar Year (CY)	CY 2020	CY 2021	CY 2022	CY 2023
Total Crashes	1873	2236	2257	2389
Fatal Crashes	7	4	7	11
Injury Crashes	468	535	570	681
Pedestrian-Related Fatal Crashes	1	1	3	4
Percent of Pedestrian-Related Fatal Crashes to Total Fatal Crashes	14%	25%	43%	36%
Pedestrian-Related Injury Crashes	31	46	59	68
Percent of Pedestrian-Related Injury Crashes to Total Injury Crashes	7%	9%	10%	10%

Virginia House District 78 Bicycle Crash Statistics

Report Generated May, 2024

	Count	Highest Time Period(s)	Highest Day(s)	Highest Month(s)
Fatal Crashes	0	-	-	-
Bicycle Fatalities	0	-	-	-
Serious Injury Crashes	6	3:00am - 5:59am 9:00pm - 11:59pm (66%)	Thursday • Wednesday (66%)	May (50%)



House District 78 Bicycle-Related Crashes

- | | |
|--------------------|------------------------|
| Interstate Crashes | Non-interstate Crashes |
| ● Fatal | ● Fatal |
| ⊕ Serious Injury | ● Serious Injury |

The blue gradient represents the density of all bicycle-related crashes.

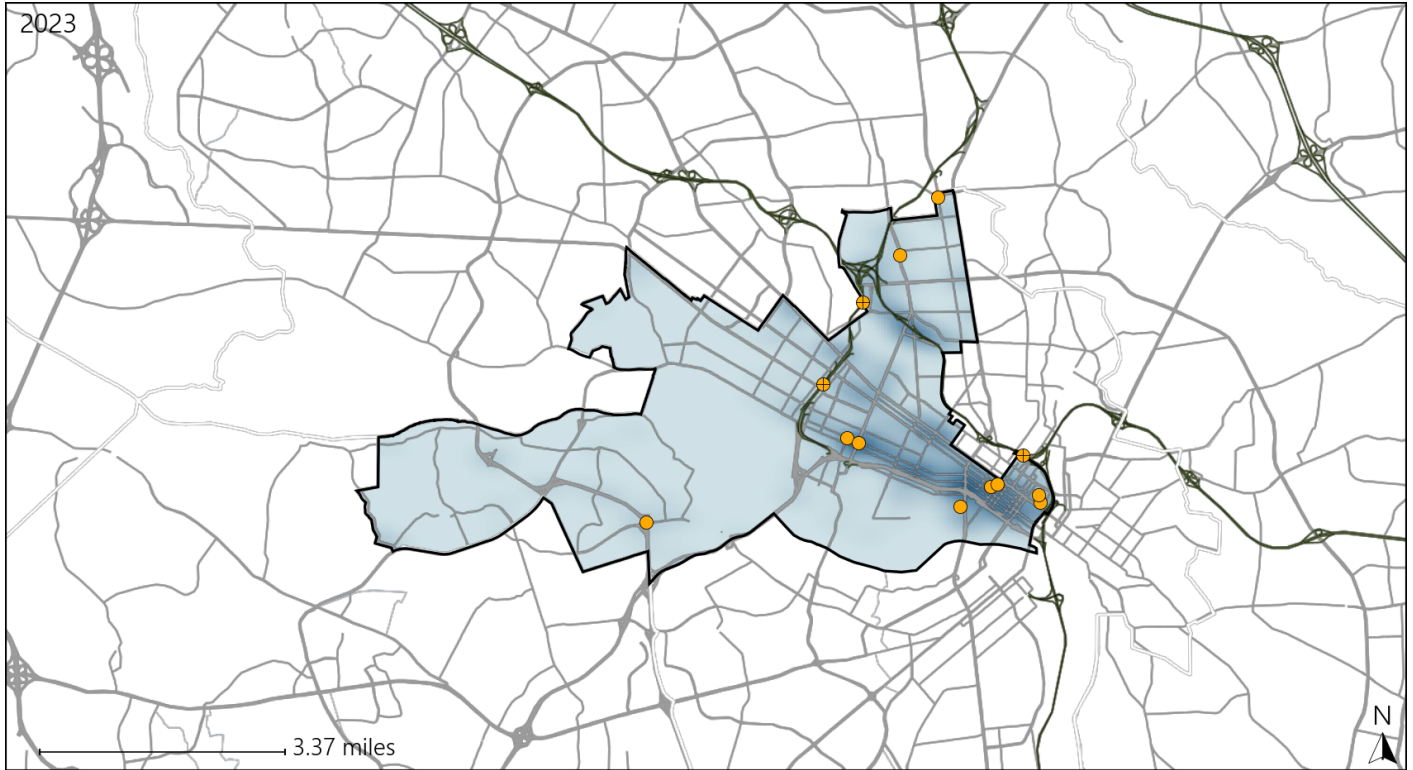


Available Crash Data - Calendar Year (CY)	CY 2020	CY 2021	CY 2022	CY 2023
Total Crashes	1873	2236	2257	2389
Fatal Crashes	7	4	7	11
Injury Crashes	468	535	570	681
Bicycle-Related Fatal Crashes	0	0	0	0
Percent of Bicycle-Related Fatal Crashes to Total Fatal Crashes	0%	0%	0%	0%
Bicycle-Related Injury Crashes	18	27	22	23
Percent of Bicycle-Related Injury Crashes to Total Injury Crashes	4%	5%	4%	3%

Virginia House District 78 Distracted Driving Crash Statistics

Report Generated May, 2024

	Count	Highest Time Period(s)	Highest Day(s)	Highest Month(s)
Fatal Crashes	0	-	-	-
Resulting Fatalities	0	-	-	-
Serious Injury Crashes	13	9:00am - 11:59am (31%)	Wednesday (31%)	February (31%)



House District 78 Distracted Driving-Related Crashes

- | | |
|--------------------|------------------------|
| Interstate Crashes | Non-interstate Crashes |
| ● Fatal | ● Fatal |
| ● Serious Injury | ● Serious Injury |

The blue gradient represents the density of all distracted driving-related crashes.



Available Crash Data - Calendar Year (CY)	CY 2020	CY 2021	CY 2022	CY 2023
Total Crashes	1873	2236	2257	2389
Fatal Crashes	7	4	7	11
Injury Crashes	468	535	570	681
Distracted Driving-Related Fatal Crashes	1	0	0	0
Percent of Distracted Driving-Related Fatal Crashes to Total Fatal Crashes	14%	0%	0%	0%
Distracted Driving-Related Injury Crashes	88	111	94	122
Percent of Distracted Driving-Related Injury Crashes to Total Injury Crashes	19%	21%	16%	18%