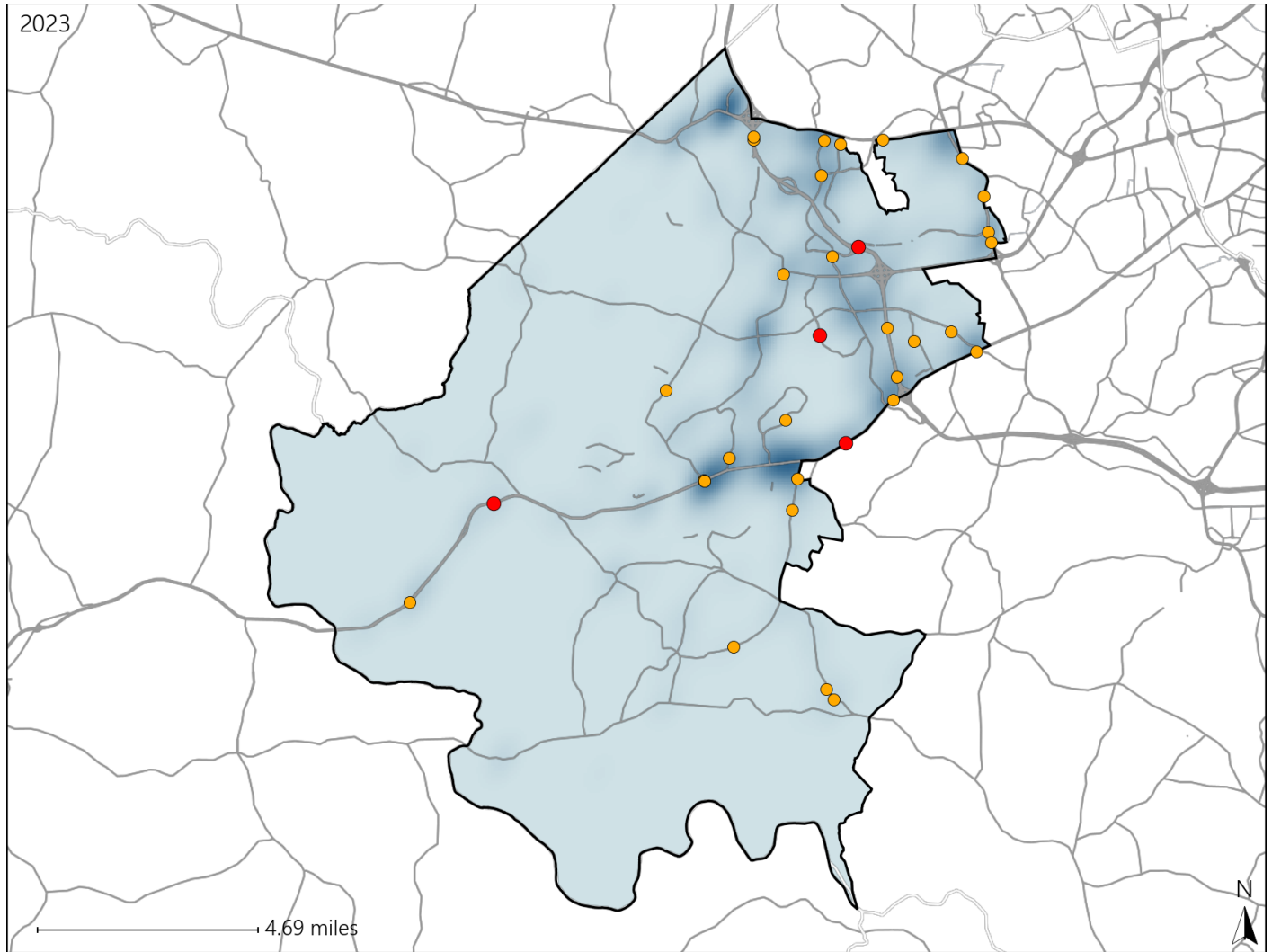


# Virginia House District 73 Crash Statistics

Report Generated May, 2024

	Count	Highest Time Period(s)	Highest Day(s)	Highest Month(s)
<b>Fatal Crashes</b>	<b>4</b>	<b>Noon - 2:59pm</b>	<b>Saturday</b>	<b>June</b>
<b>Resulting Fatalities</b>	<b>4</b>	(50%)	(50%)	(50%)
<b>Serious Injury Crashes</b>	<b>30</b>	<b>Noon - 2:59pm</b>	<b>Friday • Wednesday</b>	<b>October • September</b>
		(30%)	(40%)	(40%)



## House District 73 Crashes

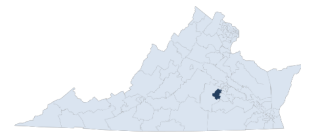
Interstate Crashes

- Fatal
- Serious Injury

Non-interstate Crashes

- Fatal
- Serious Injury

The blue gradient represents the density of all crashes.

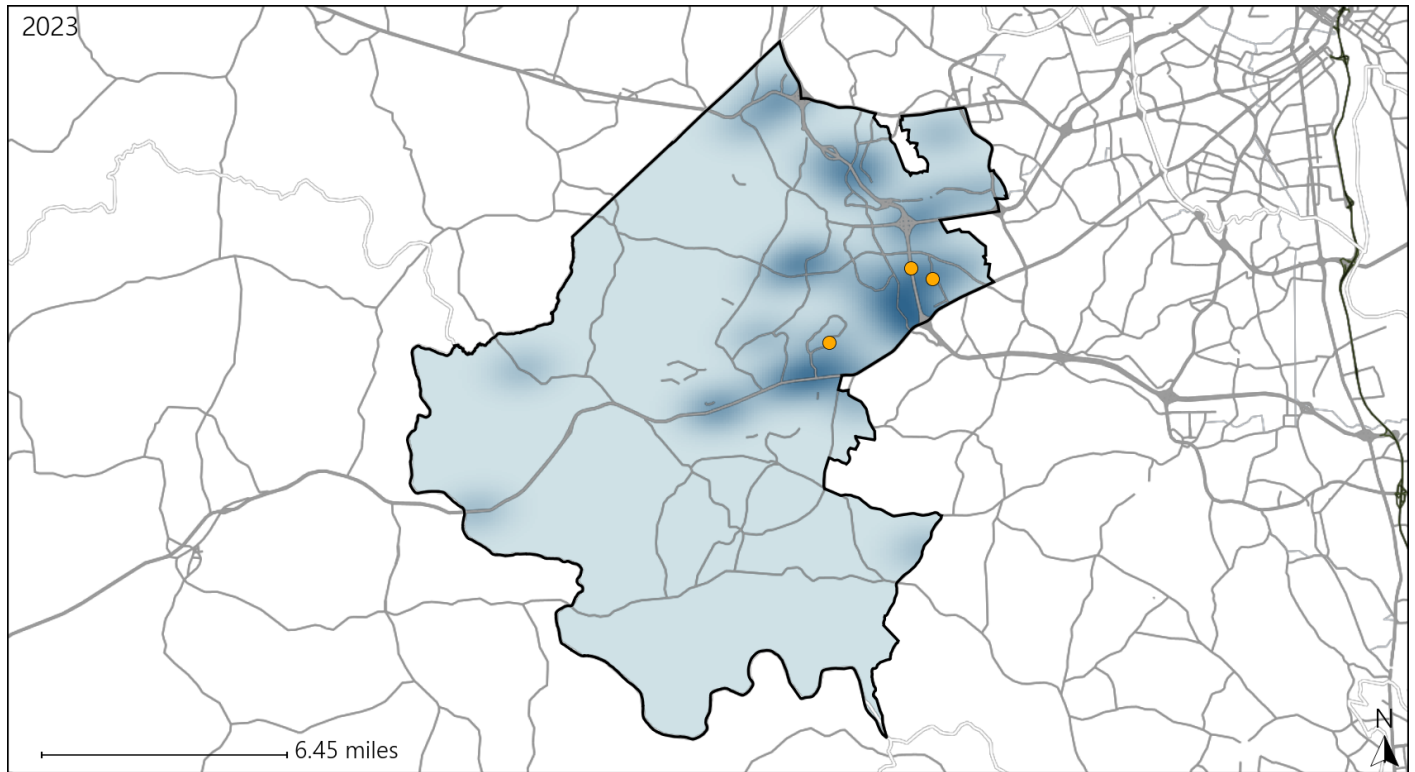


Available Crash Data - Calendar Year (CY)	CY 2020	CY 2021	CY 2022	CY 2023
<b>Total Crashes</b>	<b>778</b>	<b>876</b>	<b>940</b>	<b>1030</b>
<b>Fatal Crashes</b>	<b>9</b>	<b>4</b>	<b>5</b>	<b>4</b>
<b>Injury Crashes</b>	<b>182</b>	<b>189</b>	<b>215</b>	<b>189</b>

# Virginia House District 73 Alcohol Crash Statistics

Report Generated May, 2024

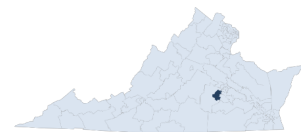
	Count	Highest Time Period(s)	Highest Day(s)	Highest Month(s)
<b>Fatal Crashes</b>	<b>0</b>	-	-	-
<b>Resulting Fatalities</b>	<b>0</b>	-	-	-
<b>Serious Injury Crashes</b>	<b>3</b>	3:00am - 5:59am 9:00pm - 11:59pm (66%)	Friday • Monday (66%)	December • March (66%)



## House District 73 Alcohol-Related Crashes

Interstate Crashes                      Non-interstate Crashes  
 ● Fatal                                      ● Fatal  
 ⊕ Serious Injury                          ⊕ Serious Injury

The blue gradient represents the density of all alcohol-related crashes.

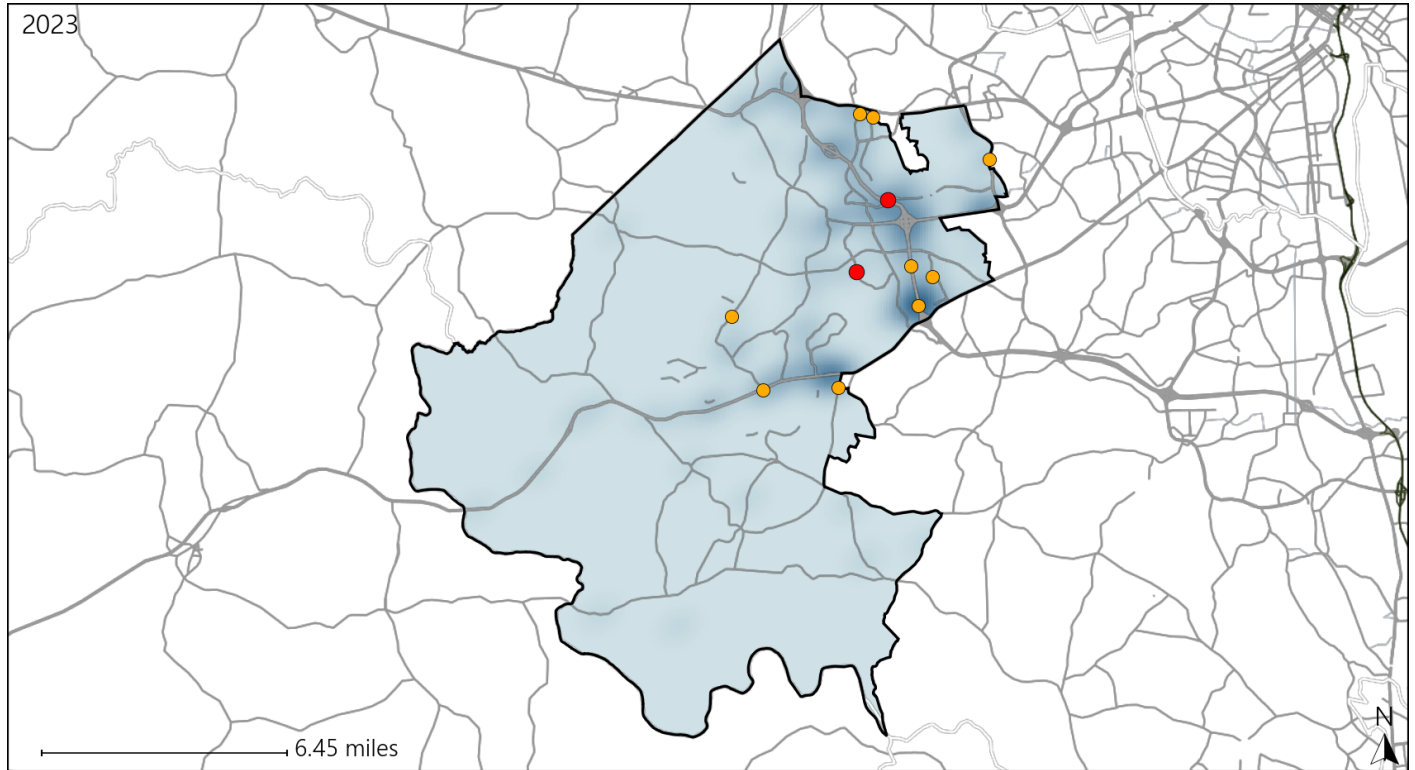


Available Crash Data - Calendar Year (CY)	CY 2020	CY 2021	CY 2022	CY 2023
Total Crashes	778	876	940	1030
Fatal Crashes	9	4	5	4
Injury Crashes	182	189	215	189
Alcohol-Related Fatal Crashes	2	2	0	0
Percent of Alcohol-Related Fatal Crashes to Total Fatal Crashes	22%	50%	0%	0%
Alcohol-Related Injury Crashes	12	13	17	6
Percent of Alcohol-Related Injury Crashes to Total Injury Crashes	7%	7%	8%	3%

# Virginia House District 73 Speed Crash Statistics

Report Generated May, 2024

	Count	Highest Time Period(s)	Highest Day(s)	Highest Month(s)
<b>Fatal Crashes</b>	<b>2</b>	<b>3:00pm - 5:59pm</b>	<b>Saturday • Sunday</b>	<b>December • November</b>
<b>Resulting Fatalities</b>	<b>2</b>	<b>Midnight - 2:59am</b> (100%)	<b>(100%)</b>	<b>(100%)</b>
<b>Serious Injury Crashes</b>	<b>9</b>	<b>9:00pm - 11:59pm</b> (44%)	<b>Friday</b> (44%)	<b>March</b> (33%)



### House District 73 Speed-Related Crashes

Interstate Crashes                      Non-interstate Crashes  
 ● Fatal                                      ● Fatal  
 ● Serious Injury                          ● Serious Injury

The blue gradient represents the density of all speed-related crashes.

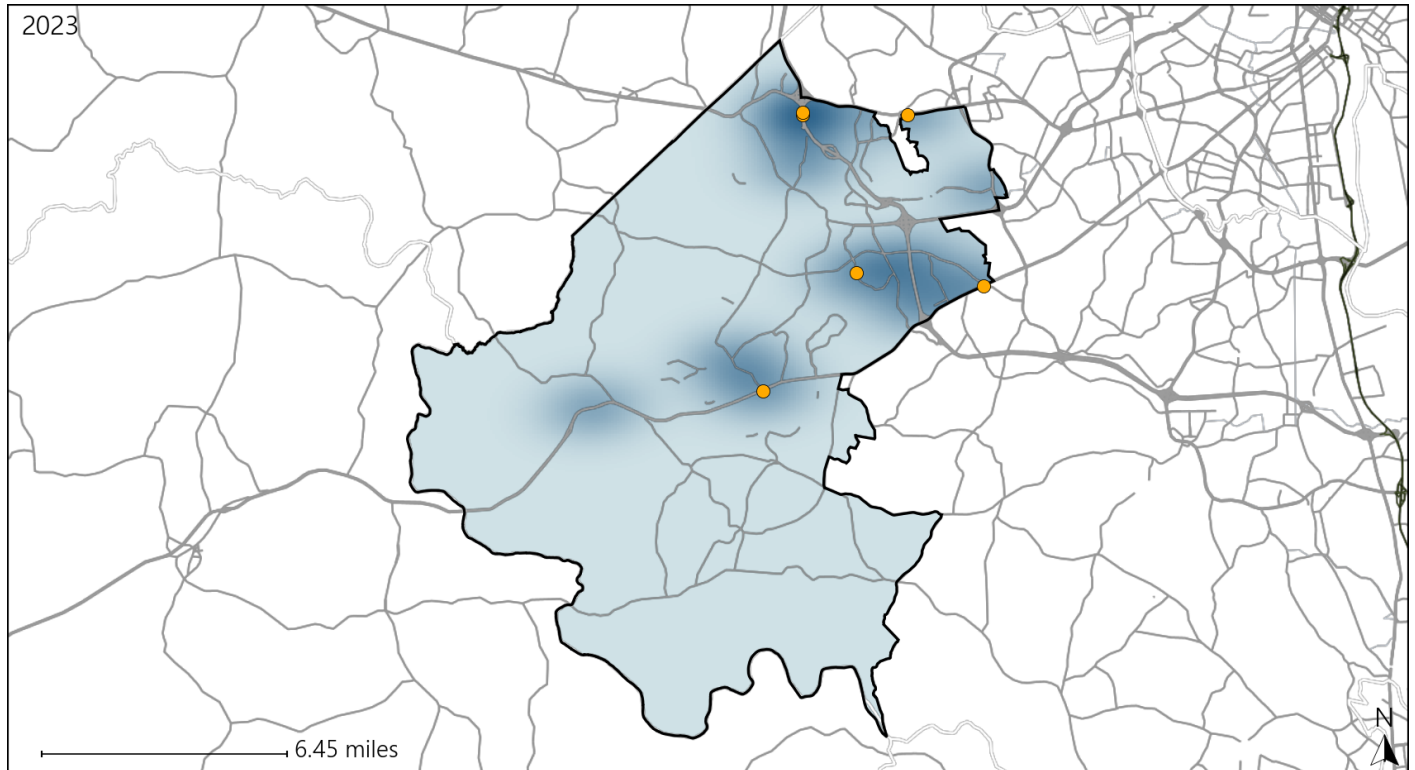


Available Crash Data - Calendar Year (CY)	CY 2020	CY 2021	CY 2022	CY 2023
Total Crashes	778	876	940	1030
Fatal Crashes	9	4	5	4
Injury Crashes	182	189	215	189
Speed-Related Fatal Crashes	6	2	3	2
Percent of Speed-Related Fatal Crashes to Total Fatal Crashes	67%	50%	60%	50%
Speed-Related Injury Crashes	38	44	47	33
Percent of Speed-Related Injury Crashes to Total Injury Crashes	21%	23%	22%	17%

# Virginia House District 73 Unrestrained Crash Statistics

Report Generated May, 2024

	Count	Highest Time Period(s)	Highest Day(s)	Highest Month(s)
<b>Fatal Crashes</b>	0	-	-	-
<b>Unrestrained Fatalities</b>	0	-	-	-
<b>Serious Injury Crashes</b>	6	9:00pm - 11:59pm (50%)	Saturday (50%)	December + July (34%)



## House District 73 Unrestrained-Related Crashes

Interstate Crashes

- Fatal
- Serious Injury

Non-interstate Crashes

- Fatal
- Serious Injury

The blue gradient represents the density of all unrestrained-related crashes.

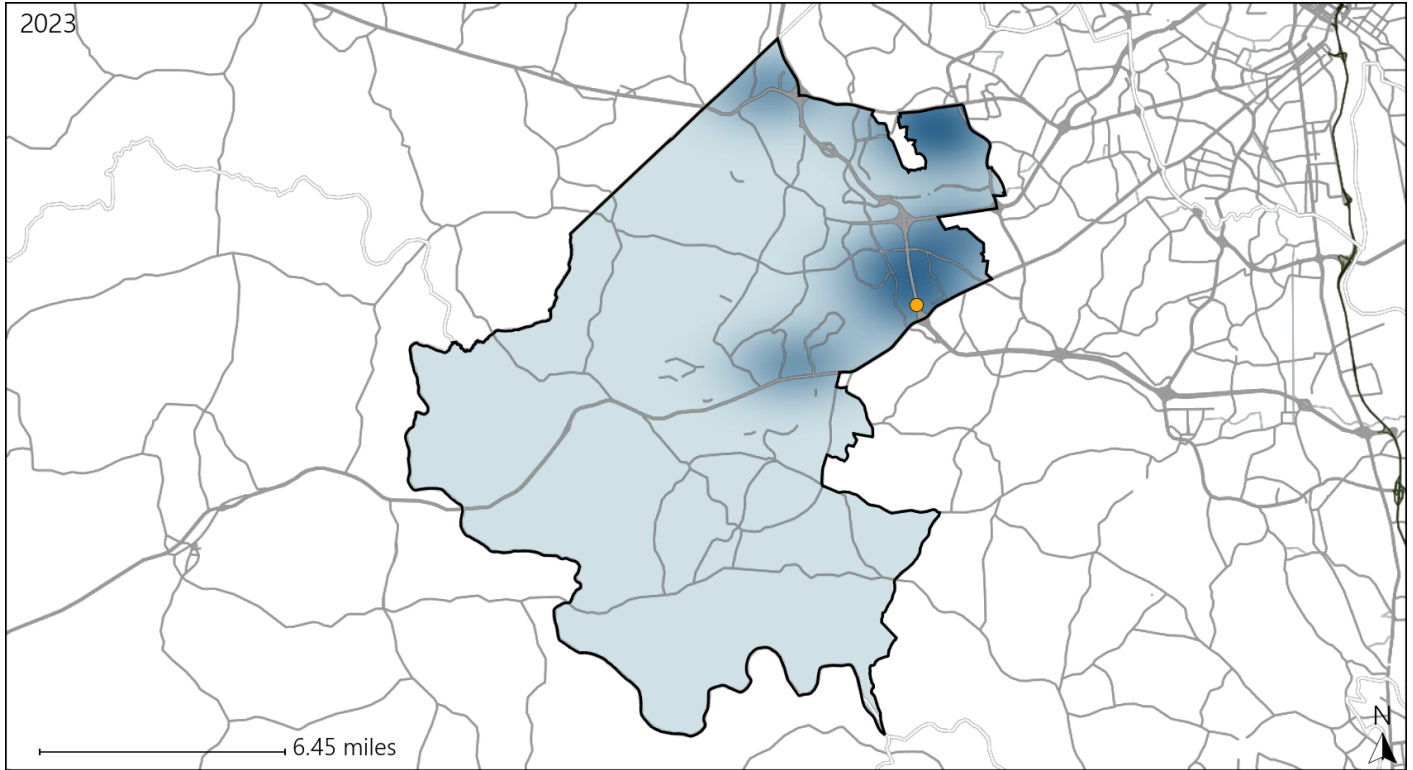


Available Crash Data - Calendar Year (CY)	CY 2020	CY 2021	CY 2022	CY 2023
<b>Total Crashes</b>	778	876	940	1030
<b>Fatalities</b>	11	4	5	4
<b>Injuries</b>	278	292	328	276
<b>Unrestrained Fatalities</b>	5	1	1	0
<b>Percent of Unrestrained Fatalities to Total Fatalities</b>	45%	25%	20%	0%
<b>Unrestrained Injuries</b>	16	19	11	17
<b>Percent of Unrestrained Injuries to Total Injuries</b>	6%	7%	3%	6%

# Virginia House District 73 Pedestrian Crash Statistics

Report Generated May, 2024

	Count	Highest Time Period(s)	Highest Day(s)	Highest Month(s)
<b>Fatal Crashes</b>	0	-	-	-
<b>Pedestrian Fatalities</b>	0	-	-	-
<b>Serious Injury Crashes</b>	1	3:00pm - 5:59pm (100%)	Friday (100%)	April (100%)



## House District 73 Pedestrian-Related Crashes

- |                    |                        |
|--------------------|------------------------|
| Interstate Crashes | Non-interstate Crashes |
| ● Fatal            | ● Fatal                |
| ● Serious Injury   | ● Serious Injury       |

The blue gradient represents the density of all pedestrian-related crashes.



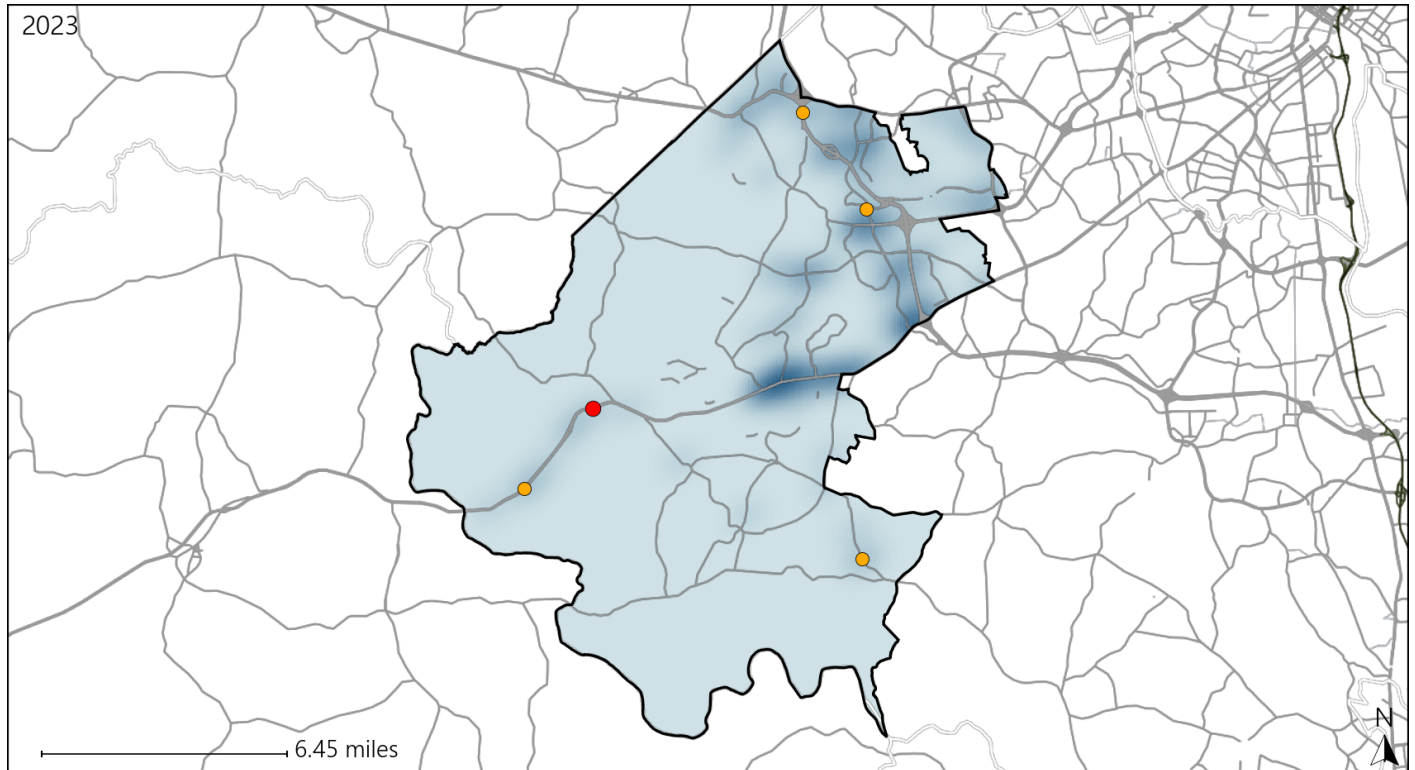
Available Crash Data - Calendar Year (CY)	CY 2020	CY 2021	CY 2022	CY 2023
Total Crashes	778	876	940	1030
Fatal Crashes	9	4	5	4
Injury Crashes	182	189	215	189
Pedestrian-Related Fatal Crashes	1	1	0	0
Percent of Pedestrian-Related Fatal Crashes to Total Fatal Crashes	11%	25%	0%	0%
Pedestrian-Related Injury Crashes	1	4	4	7
Percent of Pedestrian-Related Injury Crashes to Total Injury Crashes	1%	2%	2%	4%



# Virginia House District 73 Distracted Driving Crash Statistics

Report Generated May, 2024

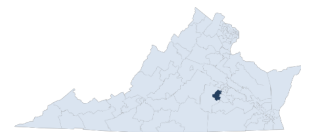
	Count	Highest Time Period(s)	Highest Day(s)	Highest Month(s)
<b>Fatal Crashes</b>	<b>1</b>	<b>Noon - 2:59pm</b>	<b>Monday</b>	<b>June</b>
<b>Resulting Fatalities</b>	<b>1</b>	<b>(100%)</b>	<b>(100%)</b>	<b>(100%)</b>
<b>Serious Injury Crashes</b>	<b>4</b>	<b>3:00pm - 5:59pm</b>	<b>Friday • Monday</b>	<b>May</b>
		<b>(50%)</b>	<b>(50%)</b>	<b>(50%)</b>



## House District 73 Distracted Driving-Related Crashes

- |                    |                        |
|--------------------|------------------------|
| Interstate Crashes | Non-interstate Crashes |
| Fatal              | Fatal                  |
| Serious Injury     | Serious Injury         |

The blue gradient represents the density of all distracted driving-related crashes.



Available Crash Data - Calendar Year (CY)	CY 2020	CY 2021	CY 2022	CY 2023
Total Crashes	778	876	940	1030
Fatal Crashes	9	4	5	4
Injury Crashes	182	189	215	189
Distracted Driving-Related Fatal Crashes	1	1	0	1
Percent of Distracted Driving-Related Fatal Crashes to Total Fatal Crashes	11%	25%	0%	25%
Distracted Driving-Related Injury Crashes	30	37	27	26
Percent of Distracted Driving-Related Injury Crashes to Total Injury Crashes	16%	20%	13%	14%