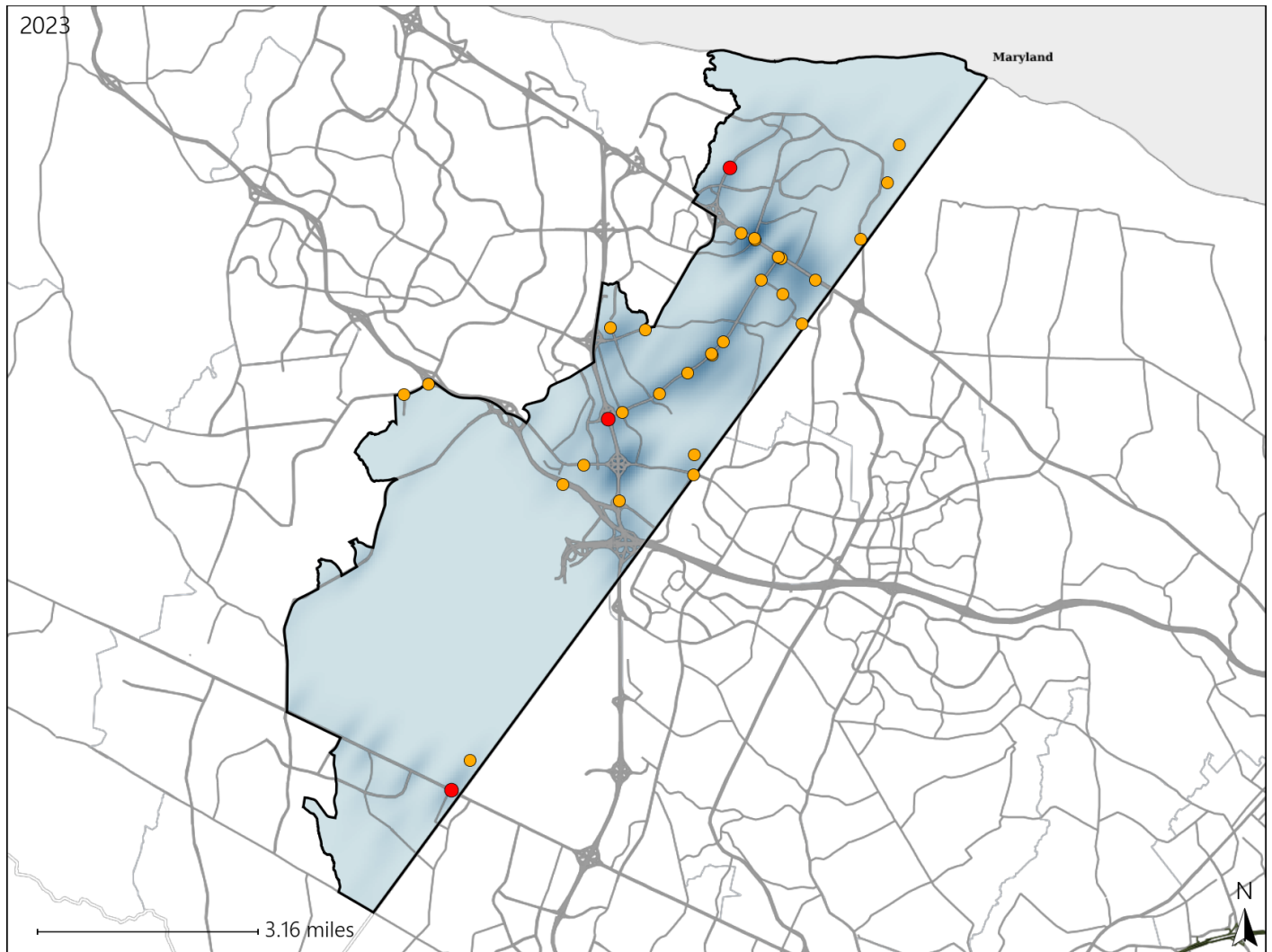


# Virginia House District 27 Crash Statistics

Report Generated May, 2024

	Count	Highest Time Period(s)	Highest Day(s)	Highest Month(s)
<b>Fatal Crashes</b>	<b>3</b>	3:00am - 5:59am	Monday • Saturday	August • July
<b>Resulting Fatalities</b>	<b>3</b>	6:00pm - 8:59pm (66%)	(66%)	(66%)
<b>Serious Injury Crashes</b>	<b>29</b>	3:00pm - 5:59pm	Friday • Thursday	June • September
		6:00pm - 8:59pm (48%)	(48%)	(34%)



### House District 27 Crashes

Interstate Crashes

- Fatal
- Serious Injury

Non-interstate Crashes

- Fatal
- Serious Injury

The blue gradient represents the density of all crashes.

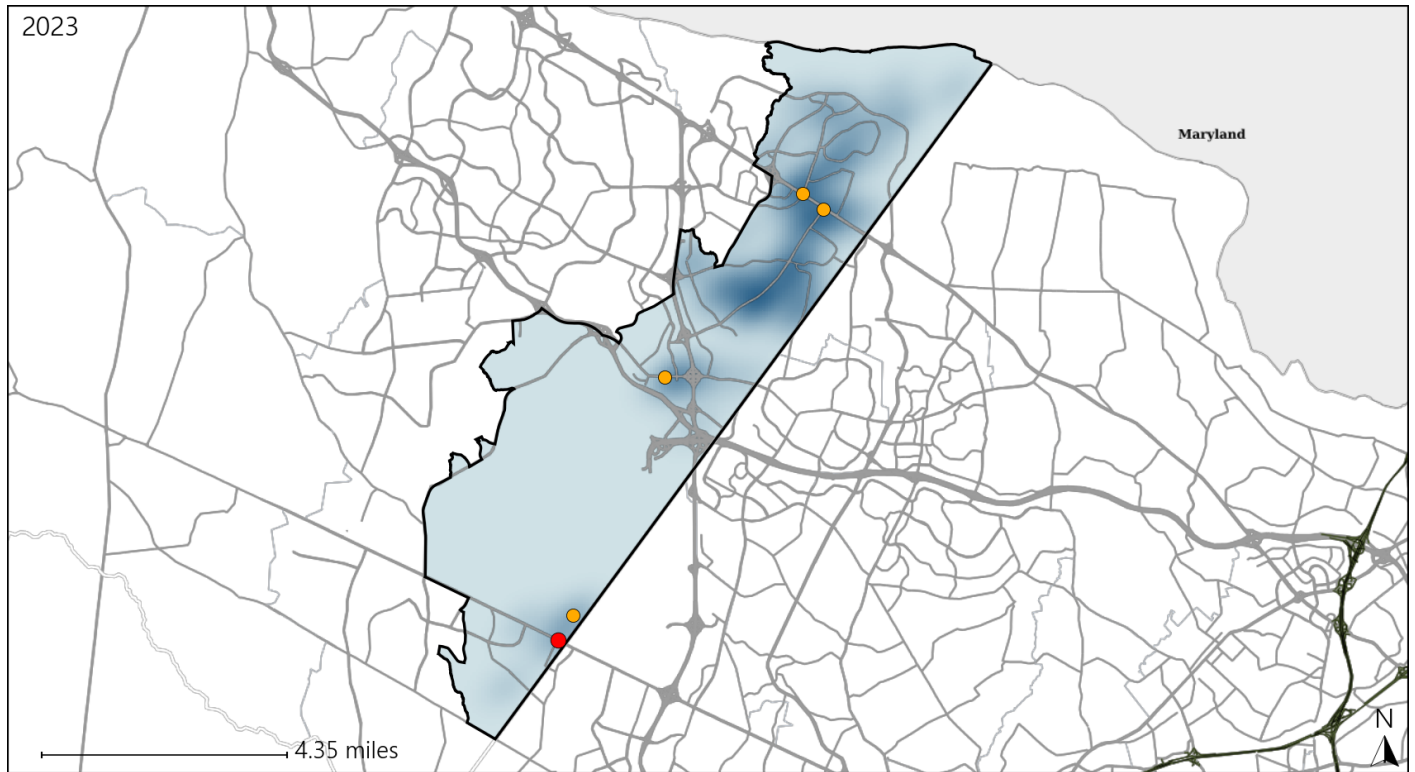


Available Crash Data - Calendar Year (CY)	CY 2020	CY 2021	CY 2022	CY 2023
Total Crashes	860	942	1081	1089
Fatal Crashes	3	2	3	3
Injury Crashes	202	226	249	257

# Virginia House District 27 Alcohol Crash Statistics

Report Generated May, 2024

	Count	Highest Time Period(s)	Highest Day(s)	Highest Month(s)
<b>Fatal Crashes</b>	<b>1</b>	<b>3:00am - 5:59am</b>	<b>Thursday</b>	<b>July</b>
<b>Resulting Fatalities</b>	<b>1</b>	<b>(100%)</b>	<b>(100%)</b>	<b>(100%)</b>
<b>Serious Injury Crashes</b>	<b>4</b>	<b>3:00am - 5:59am 6:00pm - 8:59pm</b>	<b>Friday • Saturday</b>	<b>April • February</b>
		<b>(50%)</b>	<b>(50%)</b>	<b>(50%)</b>



## House District 27 Alcohol-Related Crashes

Interstate Crashes

Non-interstate Crashes

- Fatal
- Serious Injury

- Fatal
- Serious Injury

The blue gradient represents the density of all alcohol-related crashes.

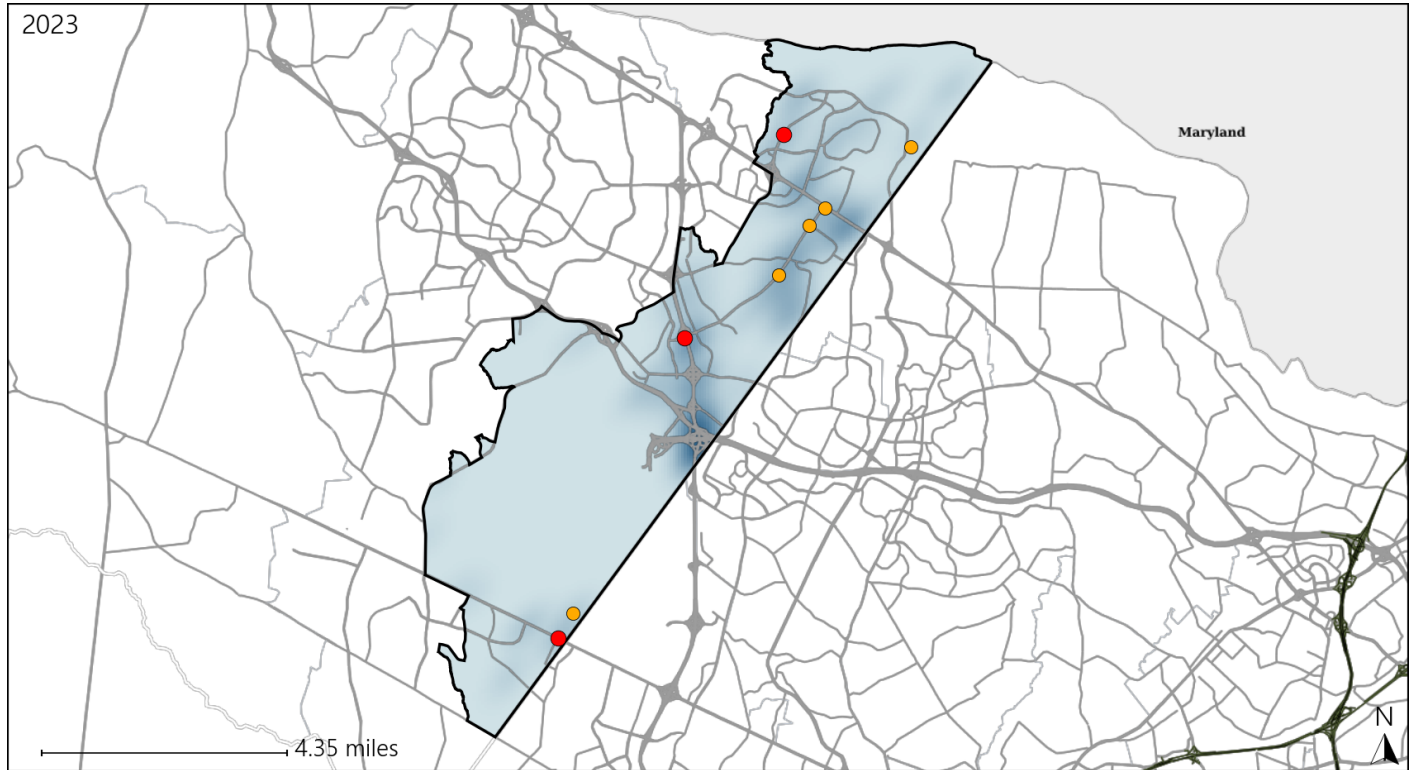


Available Crash Data - Calendar Year (CY)	CY 2020	CY 2021	CY 2022	CY 2023
Total Crashes	860	942	1081	1089
Fatal Crashes	3	2	3	3
Injury Crashes	202	226	249	257
Alcohol-Related Fatal Crashes	2	0	1	1
Percent of Alcohol-Related Fatal Crashes to Total Fatal Crashes	67%	0%	33%	33%
Alcohol-Related Injury Crashes	15	16	26	18
Percent of Alcohol-Related Injury Crashes to Total Injury Crashes	7%	7%	10%	7%

# Virginia House District 27 Speed Crash Statistics

Report Generated May, 2024

	Count	Highest Time Period(s)	Highest Day(s)	Highest Month(s)
<b>Fatal Crashes</b>	<b>3</b>	<b>3:00am - 5:59am</b>	<b>Monday • Saturday</b>	<b>August • July</b>
<b>Resulting Fatalities</b>	<b>3</b>	<b>6:00pm - 8:59pm</b> (66%)	<b>(66%)</b>	<b>(66%)</b>
<b>Serious Injury Crashes</b>	<b>5</b>	<b>Midnight - 2:59am</b> (40%)	<b>Friday • Monday</b> (40%)	<b>May • September</b> (80%)



## House District 27 Speed-Related Crashes

Interstate Crashes

Non-interstate Crashes

● Fatal

● Fatal

● Serious Injury

● Serious Injury

The blue gradient represents the density of all speed-related crashes.

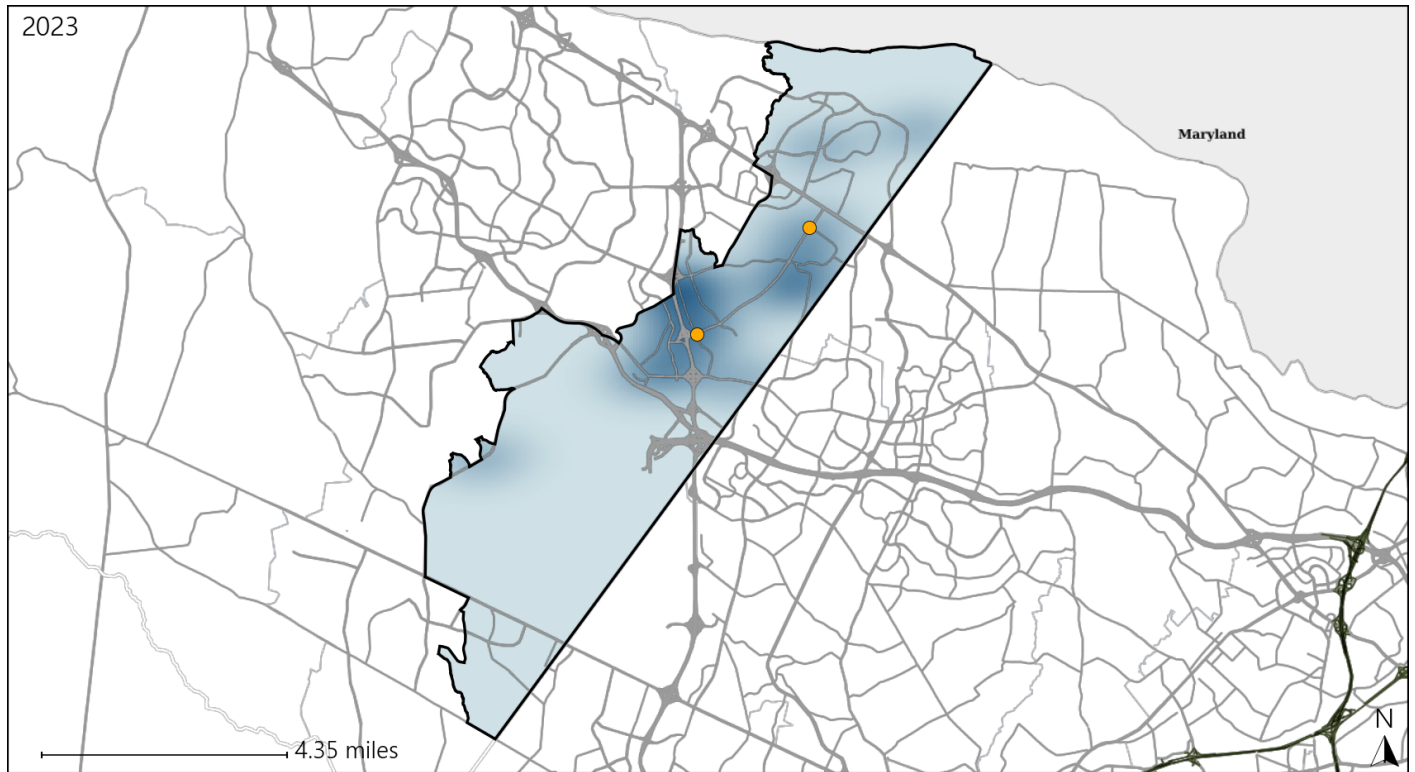


Available Crash Data - Calendar Year (CY)	CY 2020	CY 2021	CY 2022	CY 2023
Total Crashes	860	942	1081	1089
Fatal Crashes	3	2	3	3
Injury Crashes	202	226	249	257
Speed-Related Fatal Crashes	1	1	1	3
Percent of Speed-Related Fatal Crashes to Total Fatal Crashes	33%	50%	33%	100%
Speed-Related Injury Crashes	25	44	46	43
Percent of Speed-Related Injury Crashes to Total Injury Crashes	12%	19%	18%	17%

# Virginia House District 27 Unrestrained Crash Statistics

Report Generated May, 2024

	Count	Highest Time Period(s)	Highest Day(s)	Highest Month(s)
<b>Fatal Crashes</b>	<b>0</b>	-	-	-
<b>Unrestrained Fatalities</b>	<b>0</b>	-	-	-
<b>Serious Injury Crashes</b>	<b>2</b>	Midnight - 2:59am Noon - 2:59pm (100%)	Friday • Thursday (100%)	September (100%)



## House District 27 Unrestrained-Related Crashes

- |                    |                        |
|--------------------|------------------------|
| Interstate Crashes | Non-interstate Crashes |
| ● Fatal            | ● Fatal                |
| ⊕ Serious Injury   | ● Serious Injury       |

The blue gradient represents the density of all unrestrained-related crashes.

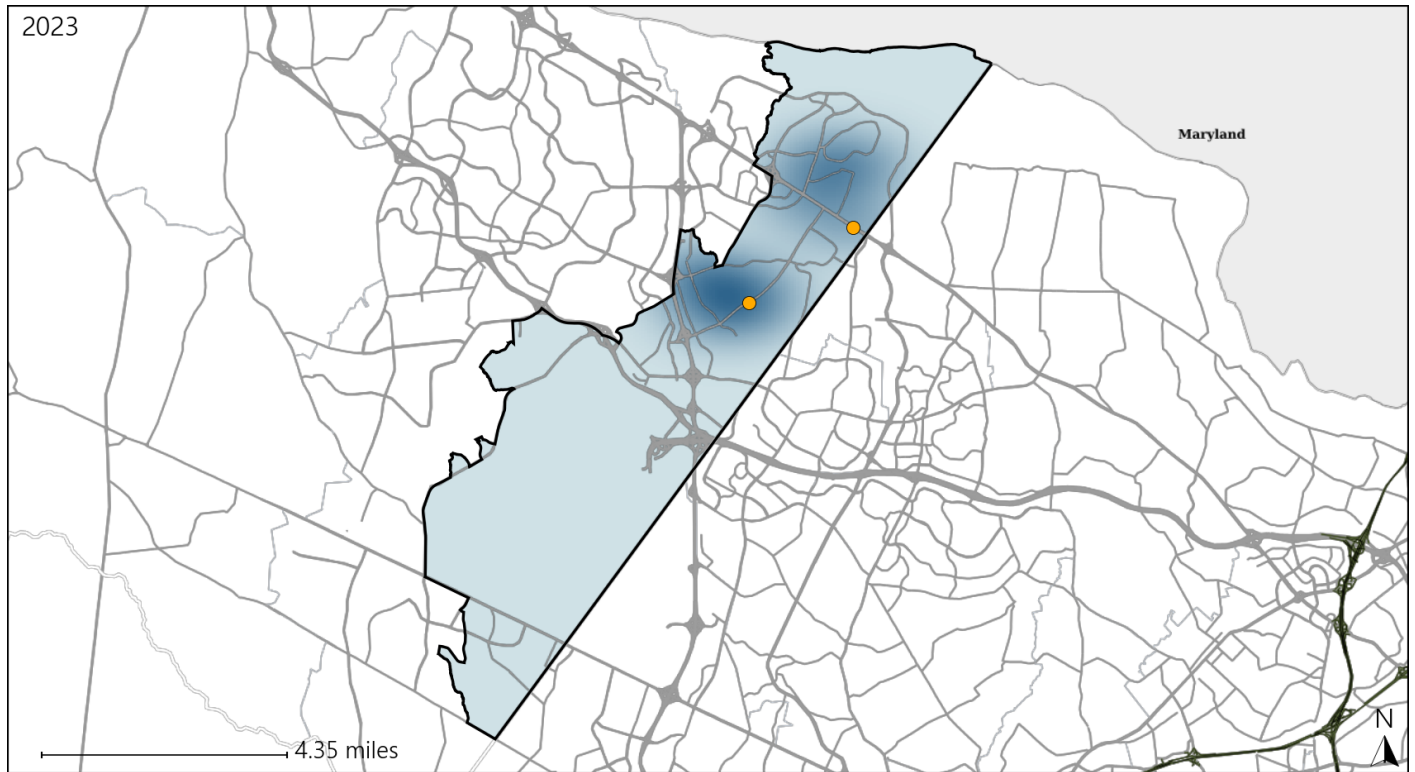


Available Crash Data - Calendar Year (CY)	CY 2020	CY 2021	CY 2022	CY 2023
<b>Total Crashes</b>	<b>860</b>	<b>942</b>	<b>1081</b>	<b>1089</b>
<b>Fatalities</b>	<b>3</b>	<b>2</b>	<b>3</b>	<b>3</b>
<b>Injuries</b>	<b>303</b>	<b>369</b>	<b>435</b>	<b>424</b>
<b>Unrestrained Fatalities</b>	<b>1</b>	<b>0</b>	<b>1</b>	<b>0</b>
<b>Percent of Unrestrained Fatalities to Total Fatalities</b>	<b>33%</b>	<b>0%</b>	<b>33%</b>	<b>0%</b>
<b>Unrestrained Injuries</b>	<b>14</b>	<b>15</b>	<b>14</b>	<b>16</b>
<b>Percent of Unrestrained Injuries to Total Injuries</b>	<b>5%</b>	<b>4%</b>	<b>3%</b>	<b>4%</b>

# Virginia House District 27 Bicycle Crash Statistics

Report Generated May, 2024

	Count	Highest Time Period(s)	Highest Day(s)	Highest Month(s)
<b>Fatal Crashes</b>	<b>0</b>	-	-	-
<b>Bicycle Fatalities</b>	<b>0</b>	-	-	-
<b>Serious Injury Crashes</b>	<b>2</b>	6:00am - 8:59am 9:00am - 11:59am (100%)	Friday • Monday (100%)	June • September (100%)



## House District 27 Bicycle-Related Crashes

Interstate Crashes

Non-interstate Crashes

- Fatal
- Serious Injury

- Fatal
- Serious Injury

The blue gradient represents the density of all bicycle-related crashes.

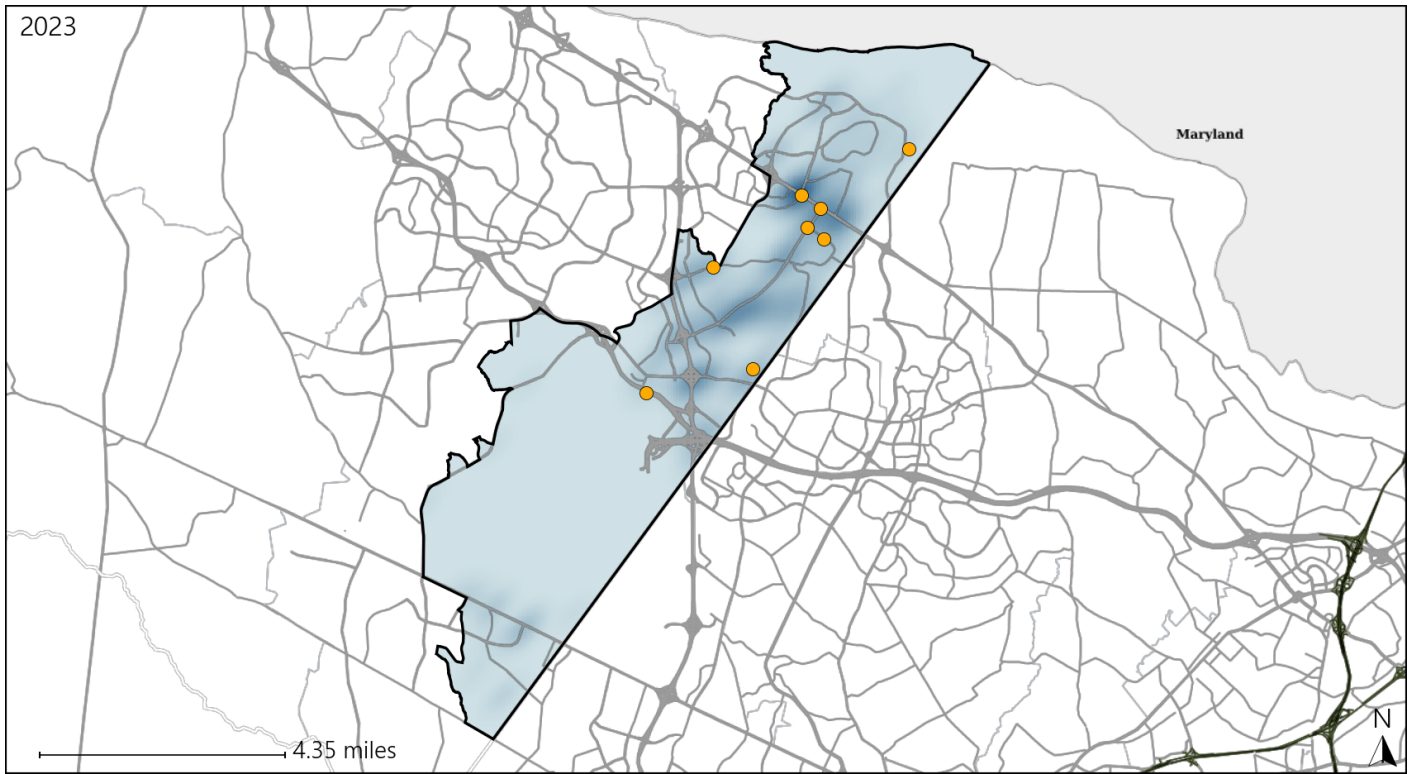


Available Crash Data - Calendar Year (CY)	CY 2020	CY 2021	CY 2022	CY 2023
Total Crashes	860	942	1081	1089
Fatal Crashes	3	2	3	3
Injury Crashes	202	226	249	257
Bicycle-Related Fatal Crashes	0	0	1	0
Percent of Bicycle-Related Fatal Crashes to Total Fatal Crashes	0%	0%	33%	0%
Bicycle-Related Injury Crashes	6	6	3	8
Percent of Bicycle-Related Injury Crashes to Total Injury Crashes	3%	3%	1%	3%

# Virginia House District 27 Distracted Driving Crash Statistics

Report Generated May, 2024

	Count	Highest Time Period(s)	Highest Day(s)	Highest Month(s)
<b>Fatal Crashes</b>	0	-	-	-
<b>Resulting Fatalities</b>	0	-	-	-
<b>Serious Injury Crashes</b>	8	6:00pm - 8:59pm 9:00pm - 11:59pm (50%)	Friday (38%)	October (38%)



## House District 27 Distracted Driving-Related Crashes

- |                    |                        |
|--------------------|------------------------|
| Interstate Crashes | Non-interstate Crashes |
| ● Fatal            | ● Fatal                |
| ⊕ Serious Injury   | ● Serious Injury       |

The blue gradient represents the density of all distracted driving-related crashes.



Available Crash Data - Calendar Year (CY)	CY 2020	CY 2021	CY 2022	CY 2023
Total Crashes	860	942	1081	1089
Fatal Crashes	3	2	3	3
Injury Crashes	202	226	249	257
Distracted Driving-Related Fatal Crashes	0	0	0	0
Percent of Distracted Driving-Related Fatal Crashes to Total Fatal Crashes	0%	0%	0%	0%
Distracted Driving-Related Injury Crashes	44	51	39	48
Percent of Distracted Driving-Related Injury Crashes to Total Injury Crashes	22%	23%	16%	19%