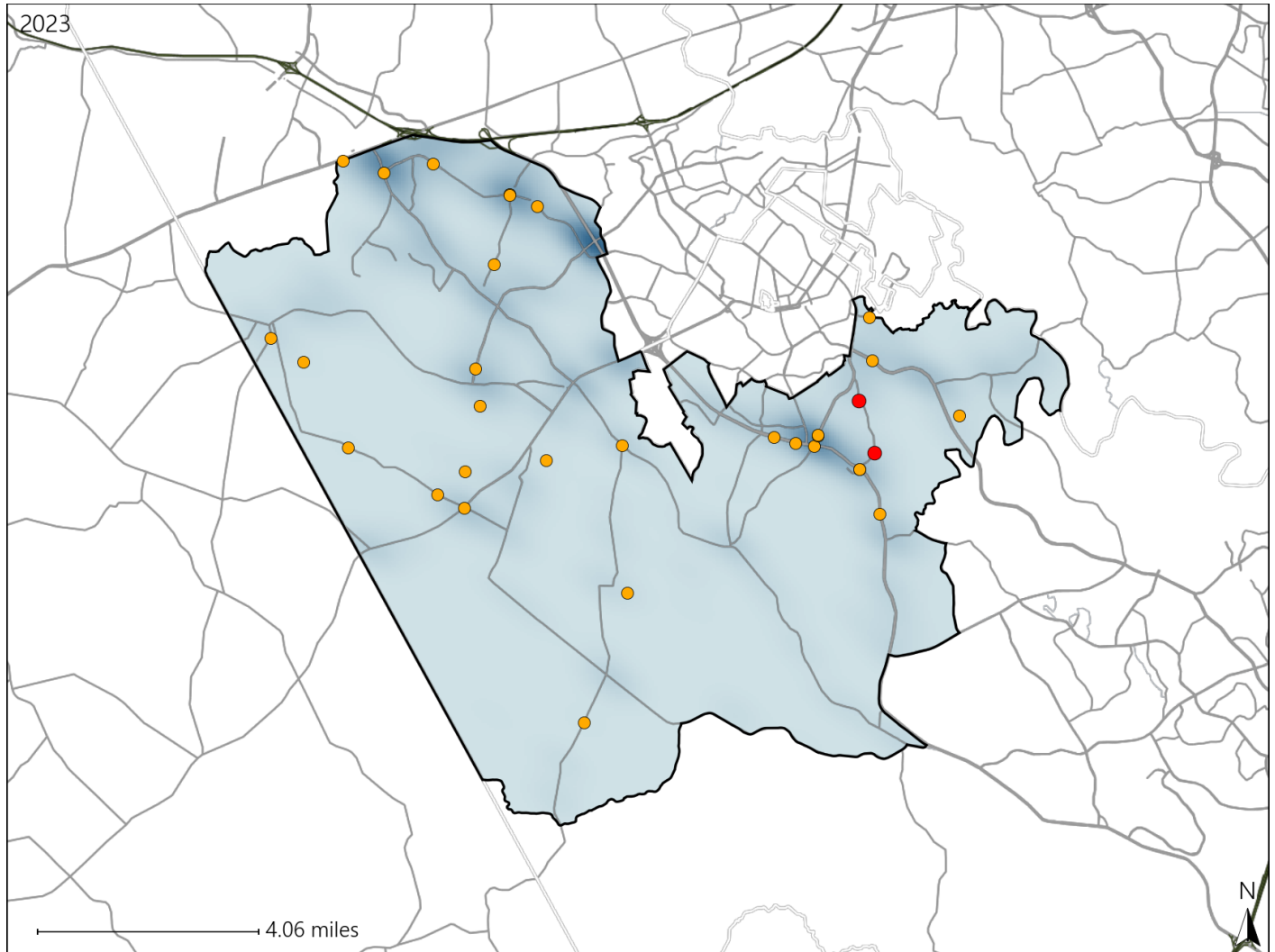


Virginia House District 22 Crash Statistics

Report Generated May, 2024

	Count	Highest Time Period(s)	Highest Day(s)	Highest Month(s)
Fatal Crashes	2	3:00pm - 5:59pm	Sunday • Tuesday	August • October
Resulting Fatalities	2	9:00pm - 11:59pm (100%)	(100%)	(100%)
Serious Injury Crashes	30	6:00am - 8:59am 6:00pm - 8:59pm (54%)	Friday (27%)	August (17%)



House District 22 Crashes

Interstate Crashes

- Fatal
- Serious Injury

Non-interstate Crashes

- Fatal
- Serious Injury

The blue gradient represents the density of all crashes.

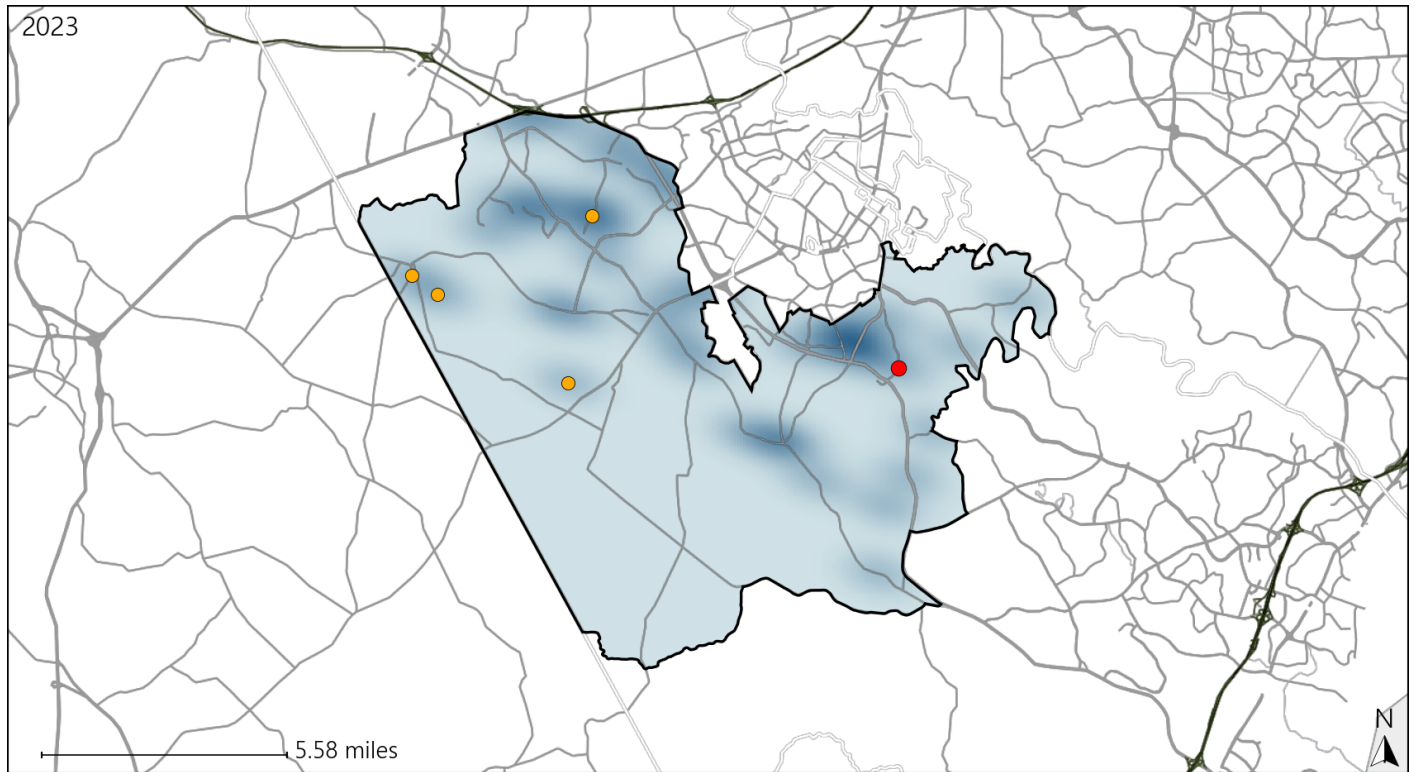


Available Crash Data - Calendar Year (CY)	CY 2020	CY 2021	CY 2022	CY 2023
Total Crashes	638	833	855	890
Fatal Crashes	5	9	2	2
Injury Crashes	157	244	247	272

Virginia House District 22 Alcohol Crash Statistics

Report Generated May, 2024

	Count	Highest Time Period(s)	Highest Day(s)	Highest Month(s)
Fatal Crashes	1	3:00pm - 5:59pm	Sunday	October
Resulting Fatalities	1	(100%)	(100%)	(100%)
Serious Injury Crashes	4	6:00am - 8:59am 6:00pm - 8:59pm	Friday • Saturday	April • June
		(50%)	(100%)	(50%)



House District 22 Alcohol-Related Crashes

Interstate Crashes Non-interstate Crashes
 ● Fatal ● Fatal
 ⊕ Serious Injury ⊕ Serious Injury

The blue gradient represents the density of all alcohol-related crashes.

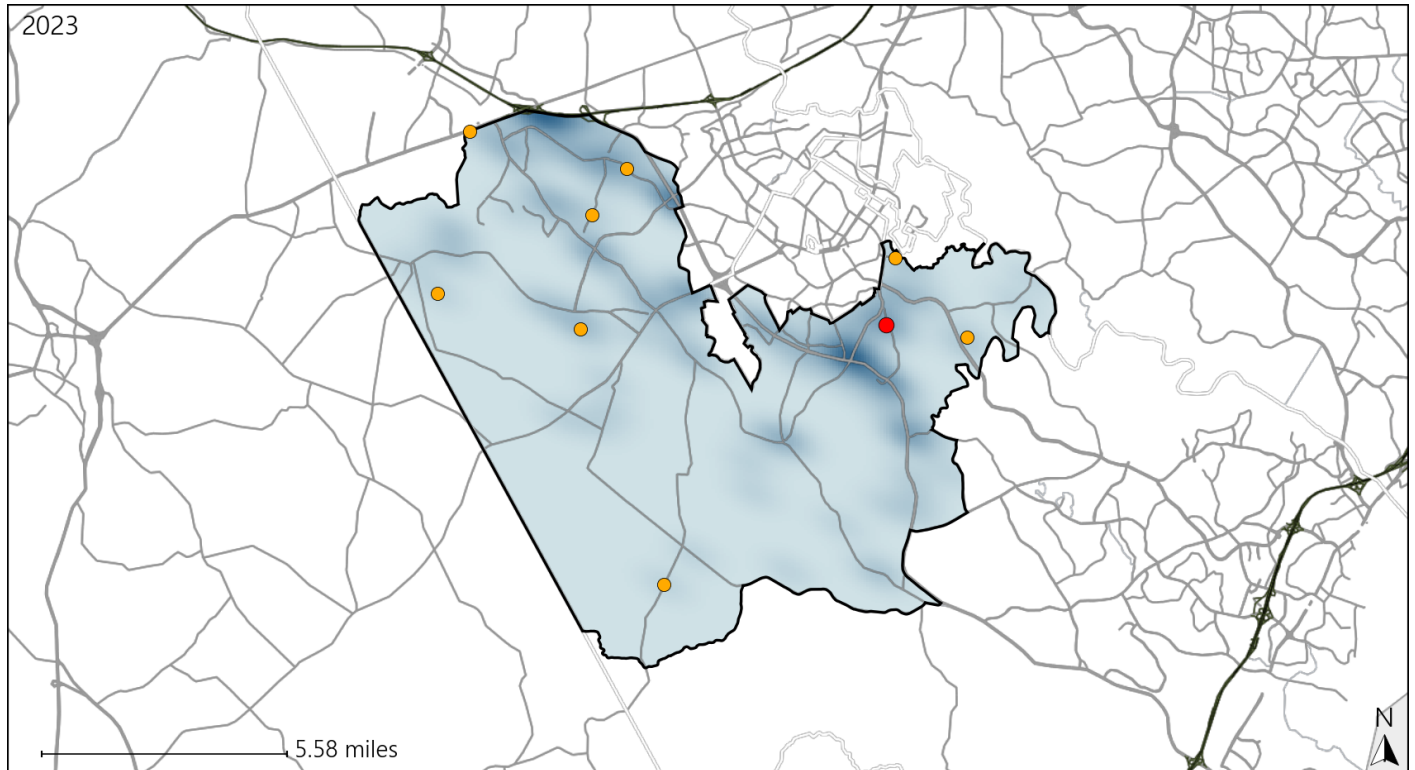


Available Crash Data - Calendar Year (CY)	CY 2020	CY 2021	CY 2022	CY 2023
Total Crashes	638	833	855	890
Fatal Crashes	5	9	2	2
Injury Crashes	157	244	247	272
Alcohol-Related Fatal Crashes	1	1	1	1
Percent of Alcohol-Related Fatal Crashes to Total Fatal Crashes	20%	11%	50%	50%
Alcohol-Related Injury Crashes	11	17	13	13
Percent of Alcohol-Related Injury Crashes to Total Injury Crashes	7%	7%	5%	5%

Virginia House District 22 Speed Crash Statistics

Report Generated May, 2024

	Count	Highest Time Period(s)	Highest Day(s)	Highest Month(s)
Fatal Crashes	1	9:00pm - 11:59pm	Tuesday	August
Resulting Fatalities	1	(100%)	(100%)	(100%)
Serious Injury Crashes	8	6:00pm - 8:59pm	Monday	August + July
		(50%)	(38%)	(50%)



House District 22 Speed-Related Crashes

Interstate Crashes Non-interstate Crashes
 ● Fatal ● Fatal
 ● Serious Injury ● Serious Injury

The blue gradient represents the density of all speed-related crashes.

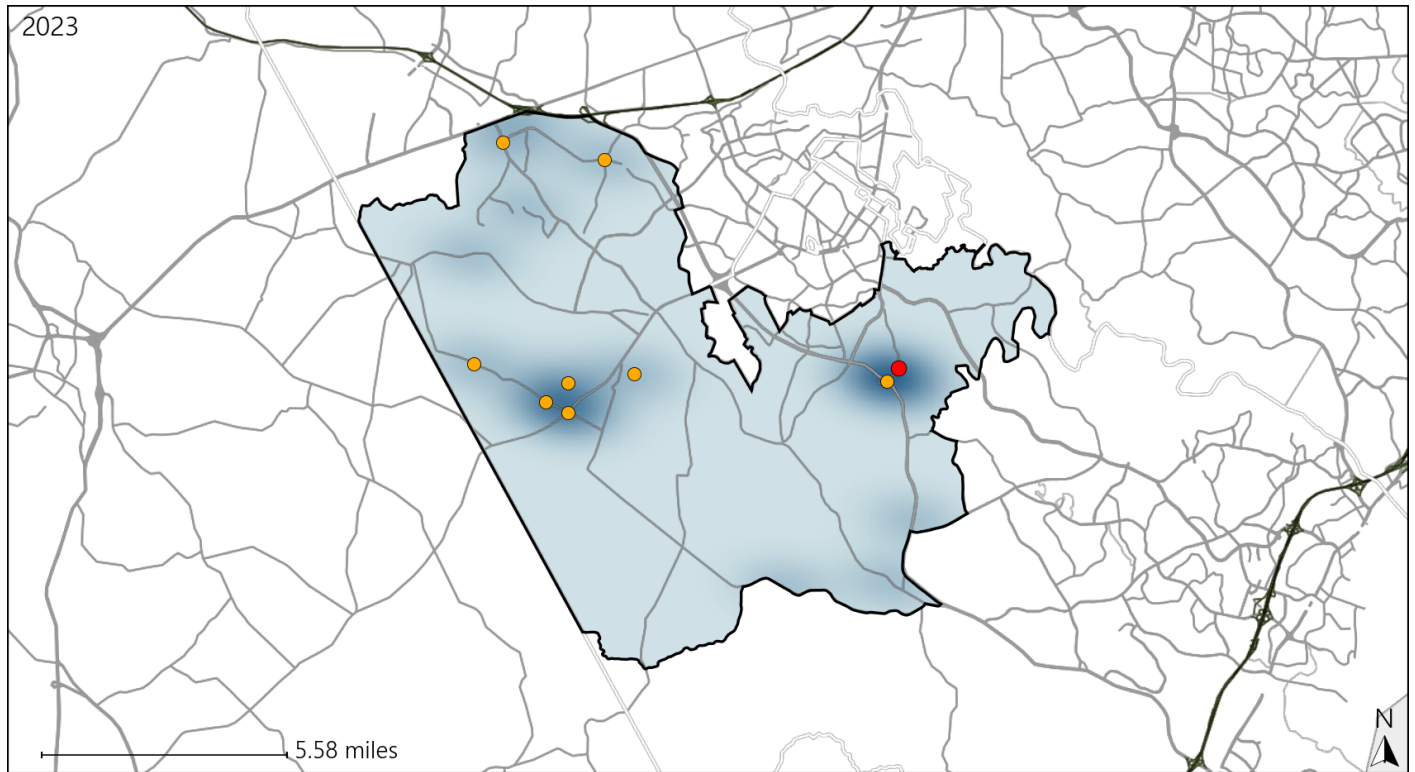


Available Crash Data - Calendar Year (CY)	CY 2020	CY 2021	CY 2022	CY 2023
Total Crashes	638	833	855	890
Fatal Crashes	5	9	2	2
Injury Crashes	157	244	247	272
Speed-Related Fatal Crashes	3	4	1	1
Percent of Speed-Related Fatal Crashes to Total Fatal Crashes	60%	44%	50%	50%
Speed-Related Injury Crashes	32	43	48	48
Percent of Speed-Related Injury Crashes to Total Injury Crashes	20%	18%	19%	18%

Virginia House District 22 Unrestrained Crash Statistics

Report Generated May, 2024

	Count	Highest Time Period(s)	Highest Day(s)	Highest Month(s)
Fatal Crashes	1	3:00pm - 5:59pm	Sunday	October
Unrestrained Fatalities	1	(100%)	(100%)	(100%)
Serious Injury Crashes	8	6:00am - 8:59am 6:00pm - 8:59pm	Monday	June
		(76%)	(38%)	(25%)



House District 22 Unrestrained-Related Crashes

- | | |
|--|--|
| Interstate Crashes | Non-interstate Crashes |
| ● Fatal | ● Fatal |
| ● Serious Injury | ● Serious Injury |

The blue gradient represents the density of all unrestrained-related crashes.

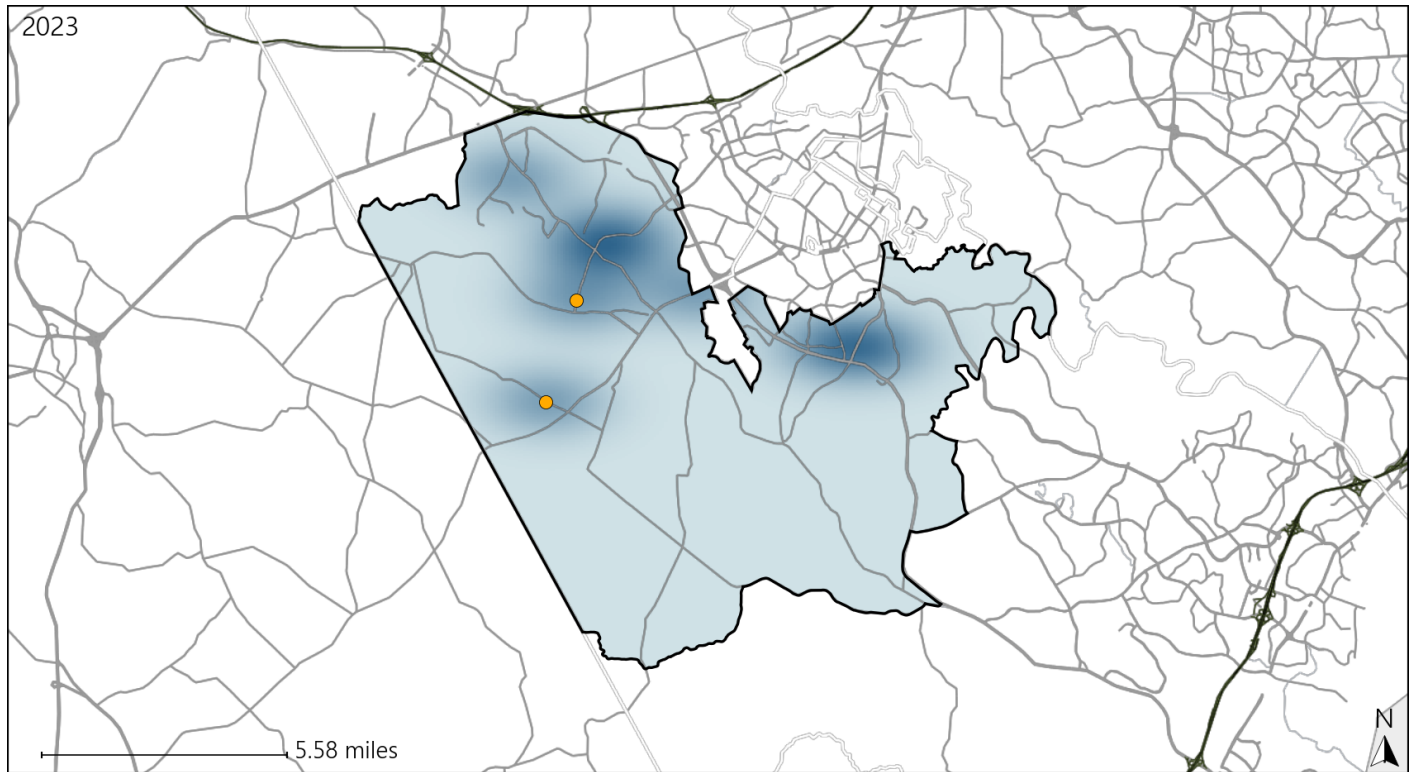


Available Crash Data - Calendar Year (CY)	CY 2020	CY 2021	CY 2022	CY 2023
Total Crashes	638	833	855	890
Fatalities	5	9	2	2
Injuries	245	430	406	474
Unrestrained Fatalities	1	2	1	1
Percent of Unrestrained Fatalities to Total Fatalities	20%	22%	50%	50%
Unrestrained Injuries	14	20	18	20
Percent of Unrestrained Injuries to Total Injuries	6%	5%	4%	4%

Virginia House District 22 Pedestrian Crash Statistics

Report Generated May, 2024

	Count	Highest Time Period(s)	Highest Day(s)	Highest Month(s)
Fatal Crashes	0	-	-	-
Pedestrian Fatalities	0	-	-	-
Serious Injury Crashes	2	6:00am - 8:59am 6:00pm - 8:59pm (100%)	Friday • Thursday (100%)	December • June (100%)



House District 22 Pedestrian-Related Crashes

- | | |
|--------------------|------------------------|
| Interstate Crashes | Non-interstate Crashes |
| ● Fatal | ● Fatal |
| ⊕ Serious Injury | ● Serious Injury |

The blue gradient represents the density of all pedestrian-related crashes.

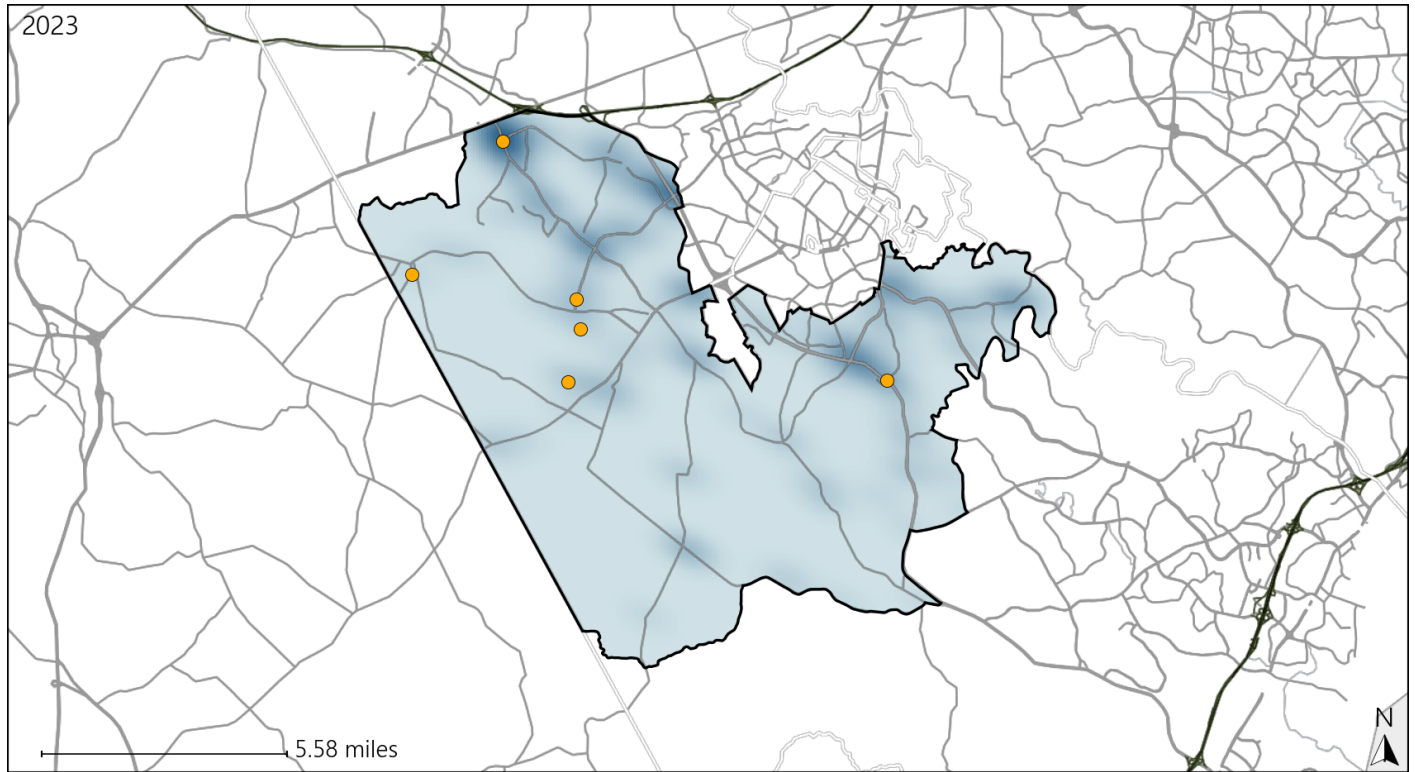


Available Crash Data - Calendar Year (CY)	CY 2020	CY 2021	CY 2022	CY 2023
Total Crashes	638	833	855	890
Fatal Crashes	5	9	2	2
Injury Crashes	157	244	247	272
Pedestrian-Related Fatal Crashes	1	0	1	0
Percent of Pedestrian-Related Fatal Crashes to Total Fatal Crashes	20%	0%	50%	0%
Pedestrian-Related Injury Crashes	11	12	4	8
Percent of Pedestrian-Related Injury Crashes to Total Injury Crashes	7%	5%	2%	3%

Virginia House District 22 Distracted Driving Crash Statistics

Report Generated May, 2024

	Count	Highest Time Period(s)	Highest Day(s)	Highest Month(s)
Fatal Crashes	0	-	-	-
Resulting Fatalities	0	-	-	-
Serious Injury Crashes	6	6:00am - 8:59am (33%)	Friday • Monday (66%)	August (33%)



House District 22 Distracted Driving-Related Crashes

- | | |
|--------------------|------------------------|
| Interstate Crashes | Non-interstate Crashes |
| ● Fatal | ● Fatal |
| ● Serious Injury | ● Serious Injury |

The blue gradient represents the density of all distracted driving-related crashes.



Available Crash Data - Calendar Year (CY)	CY 2020	CY 2021	CY 2022	CY 2023
Total Crashes	638	833	855	890
Fatal Crashes	5	9	2	2
Injury Crashes	157	244	247	272
Distracted Driving-Related Fatal Crashes	1	0	0	0
Percent of Distracted Driving-Related Fatal Crashes to Total Fatal Crashes	20%	0%	0%	0%
Distracted Driving-Related Injury Crashes	47	56	46	60
Percent of Distracted Driving-Related Injury Crashes to Total Injury Crashes	30%	23%	19%	22%