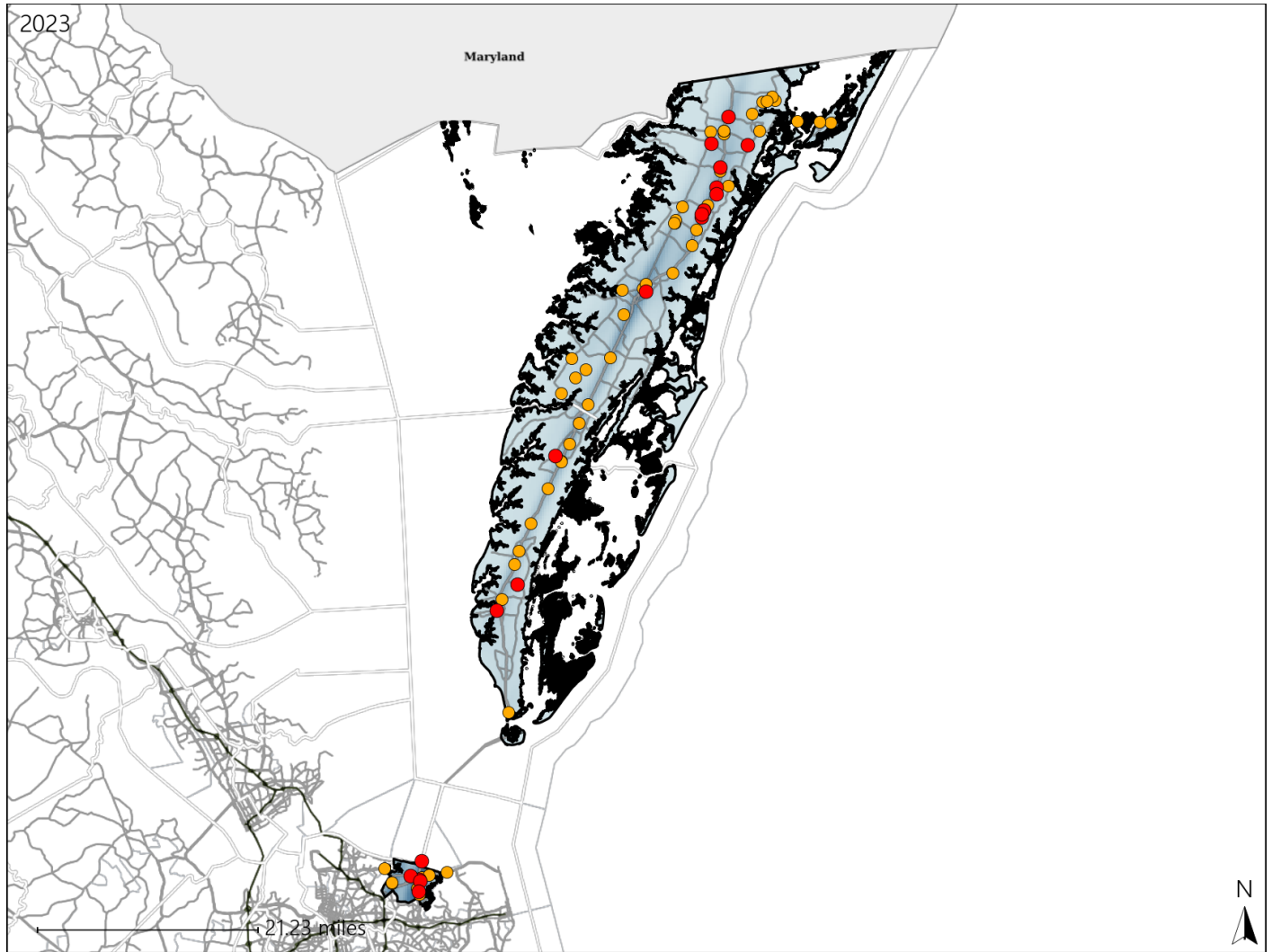


# Virginia House District 100 Crash Statistics

Report Generated May, 2024

	Count	Highest Time Period(s)	Highest Day(s)	Highest Month(s)
<b>Fatal Crashes</b>	<b>19</b>	<b>6:00pm - 8:59pm</b>	<b>Thursday • Tuesday</b>	<b>June</b>
<b>Resulting Fatalities</b>	<b>20</b>	(37%)	(52%)	(26%)
<b>Serious Injury Crashes</b>	<b>52</b>	<b>3:00pm - 5:59pm</b>	<b>Sunday</b>	<b>May</b>
		(23%)	(19%)	(17%)



## House District 100 Crashes

Interstate Crashes

- Fatal
- Serious Injury

Non-interstate Crashes

- Fatal
- Serious Injury

The blue gradient represents the density of all crashes.

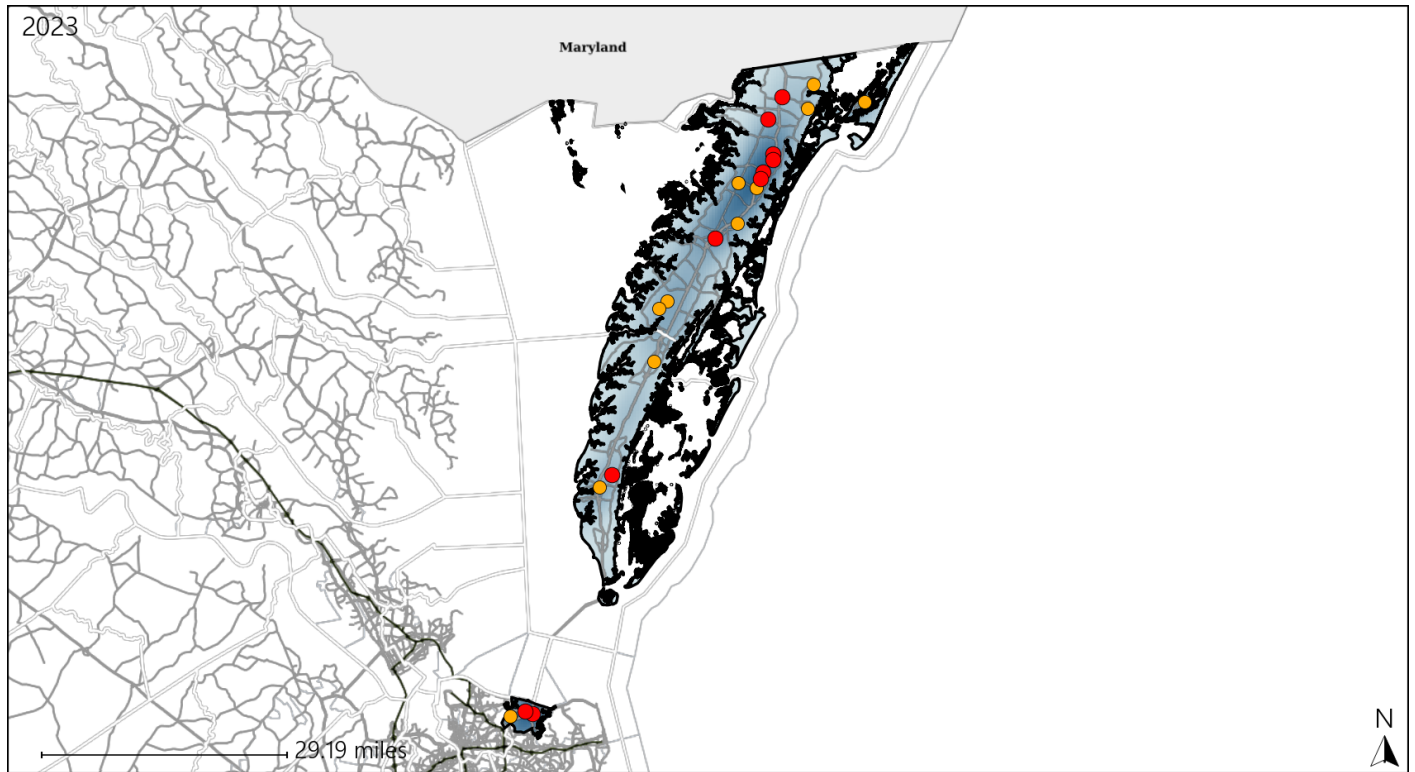


Available Crash Data - Calendar Year (CY)	CY 2020	CY 2021	CY 2022	CY 2023
Total Crashes	1122	1227	1028	1114
Fatal Crashes	12	11	11	19
Injury Crashes	284	350	290	272

# Virginia House District 100 Alcohol Crash Statistics

Report Generated May, 2024

	Count	Highest Time Period(s)	Highest Day(s)	Highest Month(s)
<b>Fatal Crashes</b>	<b>10</b>	6:00pm - 8:59pm	Saturday • Tuesday	June • March
<b>Resulting Fatalities</b>	<b>10</b>	(60%)	(60%)	(40%)
<b>Serious Injury Crashes</b>	<b>11</b>	3:00pm - 5:59pm 6:00pm - 8:59pm	Friday • Saturday	May
		(36%)	(36%)	(36%)



### House District 100 Alcohol-Related Crashes

Interstate Crashes                      Non-interstate Crashes  
 ● Fatal                                      ● Fatal  
 ⊕ Serious Injury                          ⊕ Serious Injury

The blue gradient represents the density of all alcohol-related crashes.

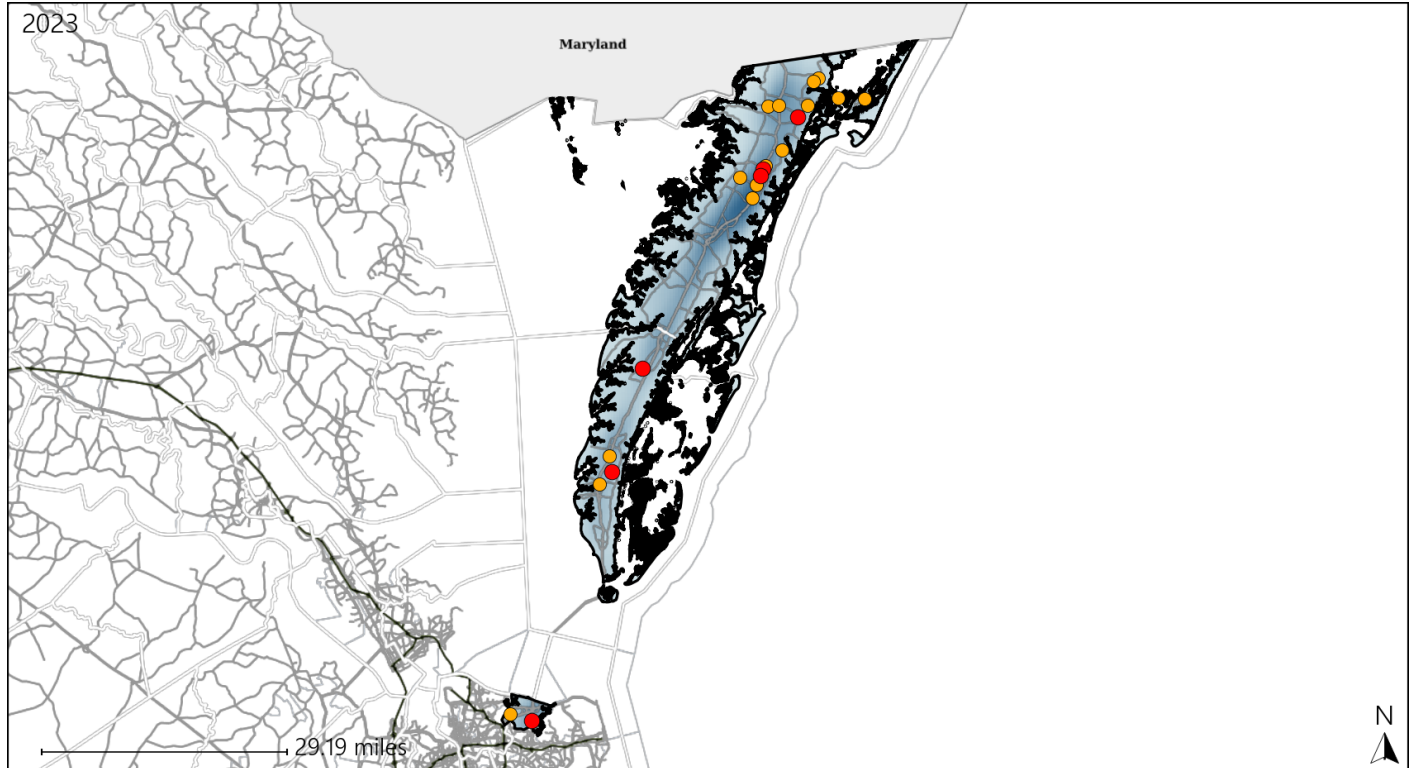


Available Crash Data - Calendar Year (CY)	CY 2020	CY 2021	CY 2022	CY 2023
Total Crashes	1122	1227	1028	1114
Fatal Crashes	12	11	11	19
Injury Crashes	284	350	290	272
Alcohol-Related Fatal Crashes	2	2	2	10
Percent of Alcohol-Related Fatal Crashes to Total Fatal Crashes	17%	18%	18%	53%
Alcohol-Related Injury Crashes	31	29	35	35
Percent of Alcohol-Related Injury Crashes to Total Injury Crashes	11%	8%	12%	13%

# Virginia House District 100 Speed Crash Statistics

Report Generated May, 2024

	Count	Highest Time Period(s)	Highest Day(s)	Highest Month(s)
<b>Fatal Crashes</b>	<b>6</b>	<b>6:00pm - 8:59pm</b>	<b>Thursday • Tuesday</b>	<b>June</b>
<b>Resulting Fatalities</b>	<b>6</b>	(50%)	(66%)	(33%)
<b>Serious Injury Crashes</b>	<b>15</b>	<b>3:00pm - 5:59pm</b>	<b>Sunday • Tuesday</b>	<b>May</b>
		(27%)	(54%)	(27%)



## House District 100 Speed-Related Crashes

Interstate Crashes

Non-interstate Crashes

- Fatal
- Serious Injury

- Fatal
- Serious Injury

The blue gradient represents the density of all speed-related crashes.

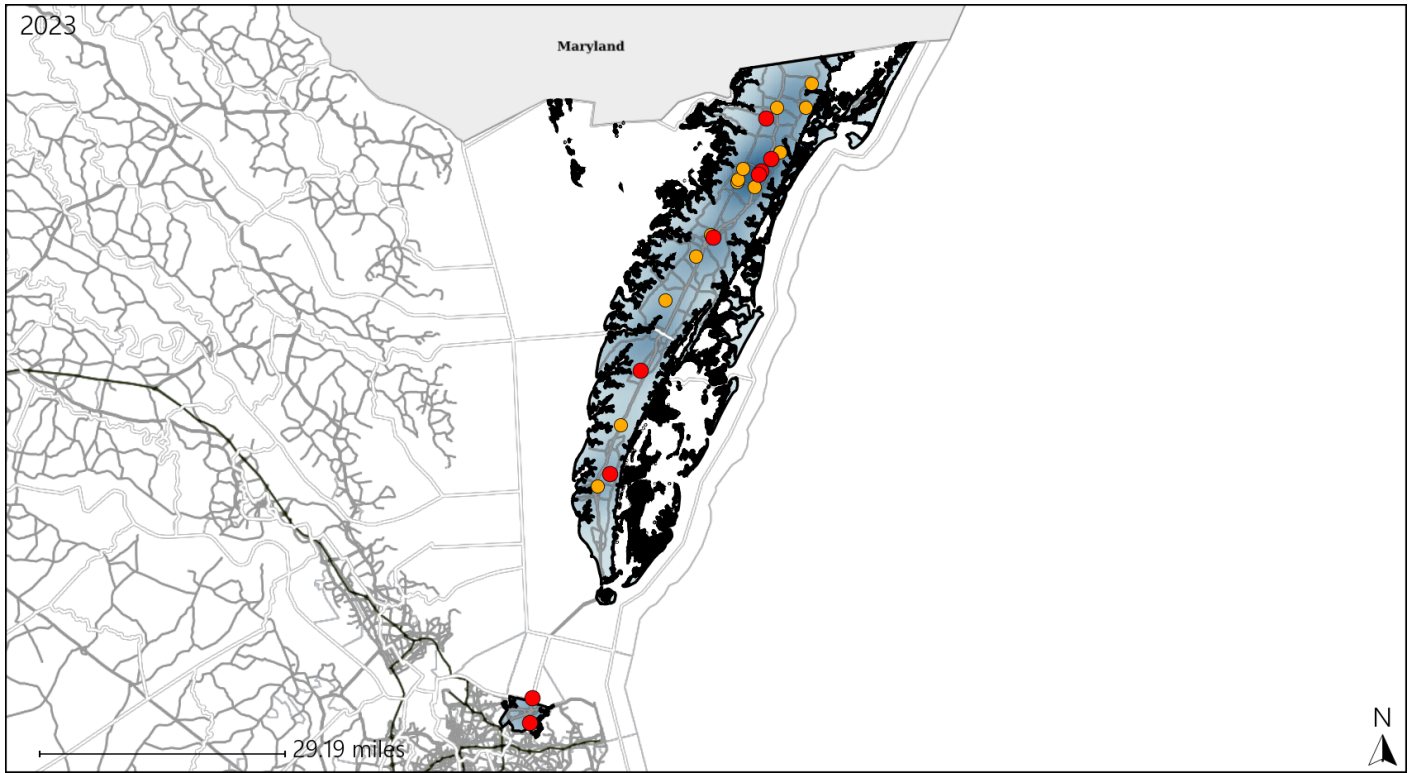


Available Crash Data - Calendar Year (CY)	CY 2020	CY 2021	CY 2022	CY 2023
Total Crashes	1122	1227	1028	1114
Fatal Crashes	12	11	11	19
Injury Crashes	284	350	290	272
Speed-Related Fatal Crashes	7	6	5	6
Percent of Speed-Related Fatal Crashes to Total Fatal Crashes	58%	55%	45%	32%
Speed-Related Injury Crashes	82	81	63	63
Percent of Speed-Related Injury Crashes to Total Injury Crashes	29%	23%	22%	23%

# Virginia House District 100 Unrestrained Crash Statistics

Report Generated May, 2024

	Count	Highest Time Period(s)	Highest Day(s)	Highest Month(s)
<b>Fatal Crashes</b>	<b>9</b>	6:00am - 8:59am	Thursday	June
<b>Unrestrained Fatalities</b>	<b>9</b>	6:00pm - 8:59pm (44%)	(44%)	(44%)
<b>Serious Injury Crashes</b>	<b>13</b>	3:00pm - 5:59pm 6:00pm - 8:59pm (46%)	Tuesday (31%)	November + October (46%)



### House District 100 Unrestrained-Related Crashes

Interstate Crashes

Non-interstate Crashes

- Fatal
- Serious Injury

- Fatal
- Serious Injury

The blue gradient represents the density of all unrestrained-related crashes.

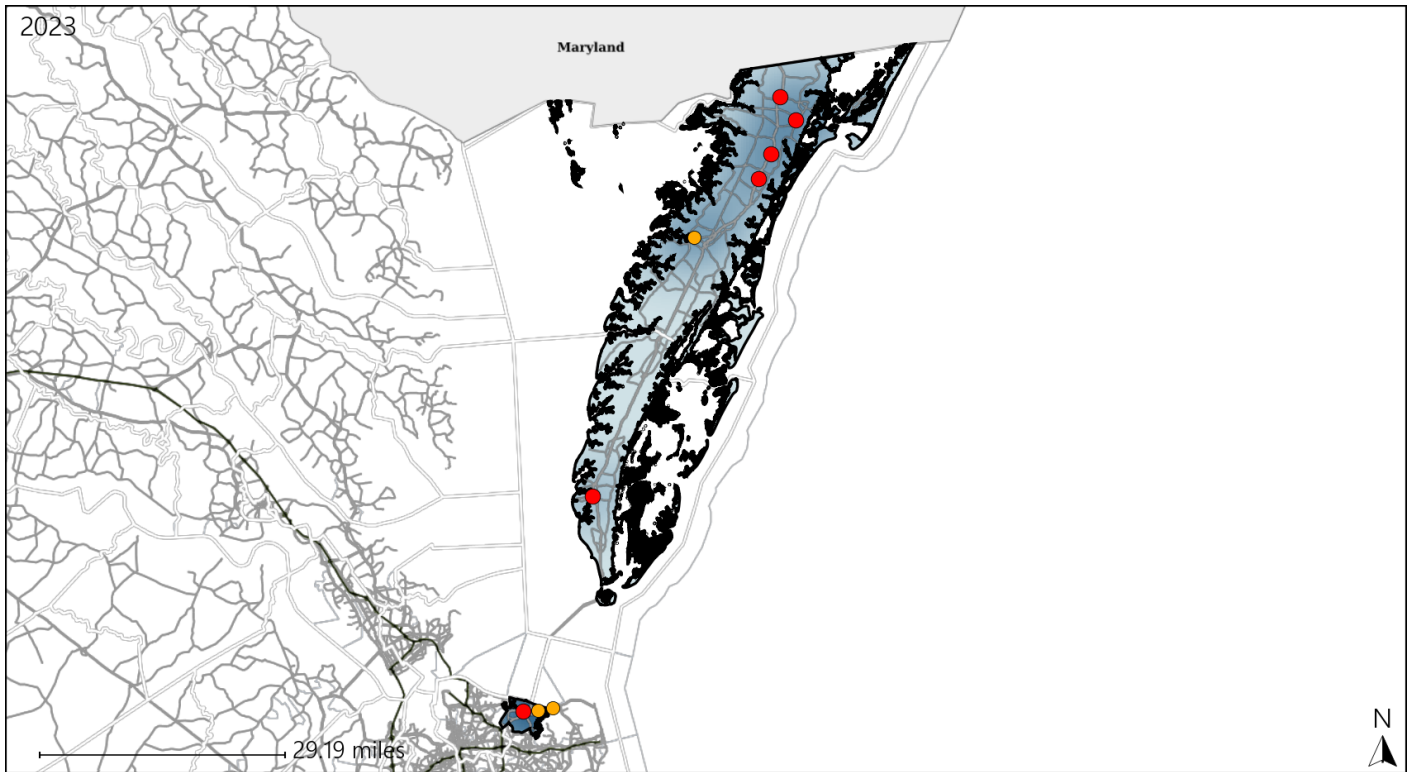


Available Crash Data - Calendar Year (CY)	CY 2020	CY 2021	CY 2022	CY 2023
Total Crashes	1122	1227	1028	1114
Fatalities	12	12	13	20
Injuries	458	550	478	440
Unrestrained Fatalities	6	7	4	9
Percent of Unrestrained Fatalities to Total Fatalities	50%	58%	31%	45%
Unrestrained Injuries	50	58	52	47
Percent of Unrestrained Injuries to Total Injuries	11%	11%	11%	11%

# Virginia House District 100 Pedestrian Crash Statistics

Report Generated May, 2024

	Count	Highest Time Period(s)	Highest Day(s)	Highest Month(s)
<b>Fatal Crashes</b>	<b>6</b>	<b>6:00pm - 8:59pm</b>	<b>Saturday</b>	<b>November</b>
<b>Pedestrian Fatalities</b>	<b>6</b>	<b>(67%)</b>	<b>(33%)</b>	<b>(33%)</b>
<b>Serious Injury Crashes</b>	<b>3</b>	<b>3:00pm - 5:59pm</b> <b>9:00am - 11:59am</b>	<b>Friday • Saturday</b>	<b>January • March</b>
		<b>(66%)</b>	<b>(66%)</b>	<b>(66%)</b>



### House District 100 Pedestrian-Related Crashes

- |                    |                        |
|--------------------|------------------------|
| Interstate Crashes | Non-interstate Crashes |
| ● Fatal            | ● Fatal                |
| ⊕ Serious Injury   | ● Serious Injury       |

The blue gradient represents the density of all pedestrian-related crashes.



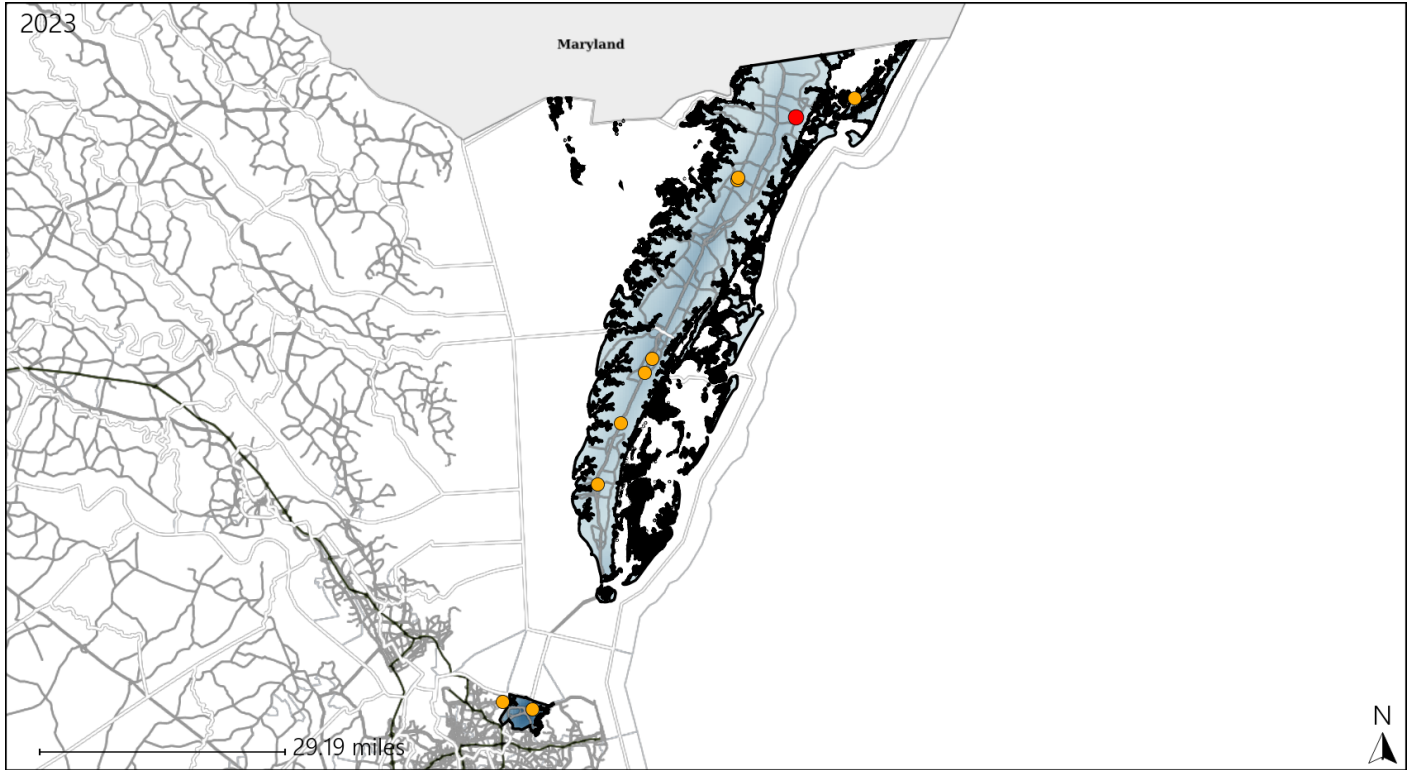
Available Crash Data - Calendar Year (CY)	CY 2020	CY 2021	CY 2022	CY 2023
Total Crashes	1122	1227	1028	1114
Fatal Crashes	12	11	11	19
Injury Crashes	284	350	290	272
Pedestrian-Related Fatal Crashes	1	1	1	6
Percent of Pedestrian-Related Fatal Crashes to Total Fatal Crashes	8%	9%	9%	32%
Pedestrian-Related Injury Crashes	10	12	3	6
Percent of Pedestrian-Related Injury Crashes to Total Injury Crashes	4%	3%	1%	2%



# Virginia House District 100 Distracted Driving Crash Statistics

Report Generated May, 2024

	Count	Highest Time Period(s)	Highest Day(s)	Highest Month(s)
<b>Fatal Crashes</b>	<b>1</b>	<b>6:00pm - 8:59pm</b>	<b>Wednesday</b>	<b>April</b>
<b>Resulting Fatalities</b>	<b>1</b>	(100%)	(100%)	(100%)
<b>Serious Injury Crashes</b>	<b>9</b>	<b>3:00pm - 5:59pm</b>	<b>Saturday - Thursday</b>	<b>August - May</b>
		(33%)	(66%)	(44%)



## House District 100 Distracted Driving-Related Crashes

- |                    |                        |
|--------------------|------------------------|
| Interstate Crashes | Non-interstate Crashes |
| Fatal              | Fatal                  |
| Serious Injury     | Serious Injury         |

The blue gradient represents the density of all distracted driving-related crashes.



Available Crash Data - Calendar Year (CY)	CY 2020	CY 2021	CY 2022	CY 2023
Total Crashes	1122	1227	1028	1114
Fatal Crashes	12	11	11	19
Injury Crashes	284	350	290	272
Distracted Driving-Related Fatal Crashes	1	1	2	1
Percent of Distracted Driving-Related Fatal Crashes to Total Fatal Crashes	8%	9%	18%	5%
Distracted Driving-Related Injury Crashes	63	52	52	42
Percent of Distracted Driving-Related Injury Crashes to Total Injury Crashes	22%	15%	18%	15%